



## Hallberg-Rassy 40 / 2007 JESSILU

Detailed specification

### DATA

LOA:	12,40 m
Year:	2007
LWL:	11,04 m
Beam:	3,82 m
Draft:	1,75 m (shallow draft)
Displacement:	10.000 kg
Hull material:	GRP
Engine:	Yanmar JH4E, 54 HP
Designer:	German Frers
Builder:	Hallberg-Rassy
Location:	Henån, Sweden
Price:	EURO 268.000 VAT paid

### BROKERS COMMENT

Hallberg-Rassy 40 is a yacht that is built to go anywhere. A solid, modern and strong blue water cruiser. Easy to handle by a couple. The layout offers an owner's aft cabin with a double berth and single berth, a forward guest cabin with a v-berth, saloon with 2 x sofas, and a foldable table. Directly to port of the entrance is the galley and to starboard is the navigation table. A spacious heads with shower is located forward of the mast bulkhead. As expected on a Hallberg-Rassy there is plenty of storage space and a (really) large engine room.

Hallberg-Rassy 40 JESSILU was originally used as a demo yacht by the Swiss Hallberg-Rassy agent. It spent the summer in fresh water and was kept inside during winter times and taken care of in best possible way. The current owner bought JESSILU in 2013 and had her transported to St Tropez, France in 2014. There after JESSILU was sailed to Tenerife where she has been used by the owner for day sailing. In April 2021 JESSILU left the Canaries and arrived at Berthon Scandinavia's showing dock in Henån about 5 weeks later. This trip is approx. 2500 Nm, with a lot of "against the wind" sailing and with wave heights to approx. 6 m. The crew was

very enthusiastic over the performance and great sea going comfort and really appreciated how well JESSILU treated them. Their general comment - this is a really great ocean-going yacht!

As already mentioned, JESSULI is now available for viewings at our showing dock in Henån, Sweden. Only 1 hrs 15 min drive from Landvetter airport. If you are up for a potential, comfortable and updated centre cockpit yacht, please give us a call!

## KEY FACT'S

- Electric in-mast furling (Seldén)
- 3 x Electric winches (Lewmar)
- Gennaker with bowsprit in stainless steel
- Bow thruster (Side Power)
- Yanmar 54 hp approx. 1650 hrs
- Gori propeller
- Electric windlass in the bow (Lewmar)
- Complete navigation system (Raymarine)
- Plotter - 2014
- Radar - 2014
- VHF - 2014
- Autopilot - 2014
- Inverter
- Heater (Webasto)
- Solid teak on deck and cockpit
- Teak seats on push pit
- Lifraft - serviced 2021
- Mainly used for day sailing

## CONSTRUCTION

### RCD Status

The yacht conforms with the essential safety requirements of A-Unlimited Ocean voyages and is categorised A – “Ocean”

### Hull, Deck & Superstructure

White hull with blue trim lines

Hull and deck in sandwich construction

### Keel & Rudder

Shallow draft 1,75 m

Bilge with lead keel

Skeg hung rudder

## TECHNICAL SYSTEM

### Engine and propulsion

Bow thruster 8 HP (Side Power)

Yanmar JH4E 40kw, 54 HP, approx. 1650 hrs

3-blade folding propeller (Gori)

Centaflex shaft coupling

Fixed propeller as spare

### Tanks

Fuel approx. 460 L (2 x stainless steel tanks)

Water approx. 460 L (2 x stainless steel tanks)

Holding tank approx. 72 L (1 x stainless steel tanks) deck and sea evacuation  
Hot water boiler 40 L

## **Pumps**

Electric emergency pump  
Manual bilge pump  
Electric Shower waste pump  
Electric Fresh water pump  
Manual freshwater pump in the galley

## **Electrical system**

220 V shore power system, Marincor inlet, 220 V outlets in all cabins, ground fault circuit breakers, fuse box and shore cable  
Inverter 12 V / 2000 W, with DC monitoring system (Mastervolt)  
Charger 220 V / 60 A  
Service batteries 12 V 250 Ah (4 x 6V Trojan)  
Start battery 12 V 60 Ah

## **Navigations system**

Compass, with light  
CH Wind (Raymarine ST60)  
Wind (Raymarine ST60)  
Depth (Raymarine ST60)  
Speed (Raymarine ST60)  
Graphic Multi (Raymarine ST60)  
Autopilot - 2014  
Withlock drive (Raymarine ST 7001 G+)  
Plotter (Raymarine C125) - 2014  
VHF DSC in cockpit (Raymarine 260e) - 2014  
AIS (Raymarine 650) out of function - 2014  
Radar (Raymarine RD24HD) - 2014  
Mast head combi antenna for VHF, FM/AM

## **Hi-Fi / IT**

Stereo/CD with radio  
Speakers in saloon and cockpit  
TV

## **Various technical equipment**

Diesel heater (Webasto)  
2 x gas bottle  
Fire extinguisher

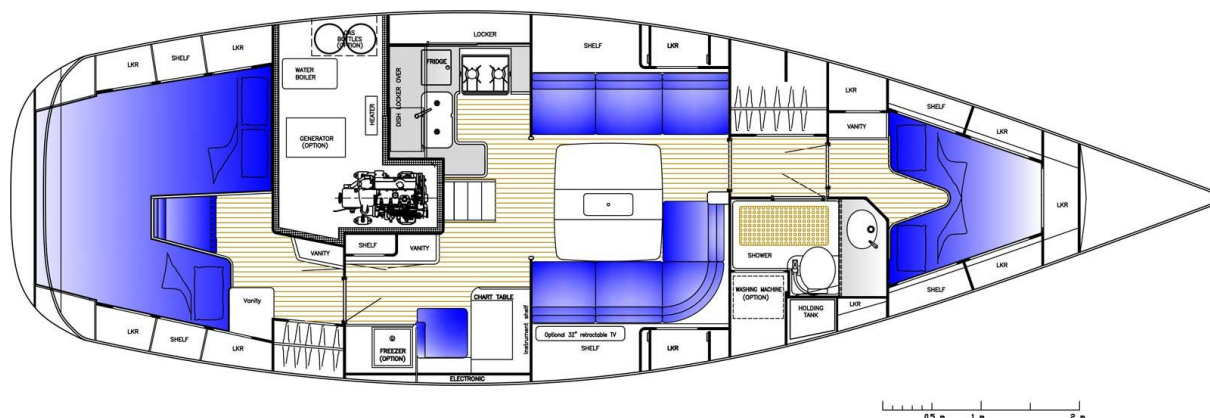
# **INTERIOR**

## **General**

Layout: Sleep 5 persons in 2 cabins, galley, saloon, navigation area and heads / shower  
Interior woodwork in mahogany matt silk finish.  
Floorboards is varnished teak with inlaid holly strips.  
Inspection hatches in floorboards.

Saloon ceiling has panelling with mahogany strips.  
Plenty of storage space in shelves, cabinets and closets.  
Good ventilation

## Interior layout



## Forward cabin

The forward cabin has a V-berth, two long berths with lots of stowage above and below. Hanging locker. Infill between the beds. Opening skylight with curtain under.

## Heads / Shower

Light and spacious.  
Wash basin and work top in composite material.  
Large mirror  
Separate shower, drained by pump  
Electric toilet  
Cupboards for stowage  
Wet locker  
Ventilation through portlight and deck hatch

## Saloon

Two saloon sofas  
Backrests with upper hinges  
Strong table with foldable sides, top opening bar.

## Navigation area

Navigations area to starboard of the entrance stairs. Large navigation table, drawers, comfortable seat, space for instruments. Two bookshelves.

## Galley

The galley is located to PT of the entrance stair. Big working surface, white laminate. Plenty of storage spaces, cupboards, drawers, dry storage and shelves.  
Double sink, extra deep.  
Gas stove, 2 burners with oven  
Electric remote gas switch  
Fridge  
Freezer in separate box

## **Aft cabin (Owners cabin)**

A passageway on the starboard leads to the aft cabin, which includes a double berth and a single berth with comfortable sprung mattress. Seats between the berths

Hanging locker and mirror

Opening skylight with curtain under

## **Interior details**

Ship's clock and barometer

Painting of the yacht

Kitchen equipment

Spring mattresses in aft cabin

Fans in cabins (Hella)

Mini-safe

## **DECK EQUIPMENT**

### **Rig**

Electric In-mast Furling (Seldén)

Furlex for Genua (Seldén)

Rod-kick

Back stay tensioner, mechanical (Seldén)

Gennaker bowsprit

Spinnaker halyard

Aluminium rigging screw protection

Deck light in front of mast

Steaming light

Anchor light

Flag halyards

Windex

### **Sails**

Furling main sail (Elvström EMS, 4 vertical battens)

Furling genoa (Elvström)

Gennaker with snuffer - 2014

Jib (Elvström)

### **Winches**

2 x Electrical Genua winches (Lewmar 50 CEST)

1 x Electric Mainsail / Outhaul winch (Lewmar 40 EST)

1 x Mainsail winch (Lewmar 30 ST)

2 x Halyard winches on mast (Lewmar 40 ST)

### **Mooring equipment**

4 x Cleats stainless steel

2 x Spring cleats stainless steel

4 x Mooring lines

4 x Fenders

Lifelines gates

Stainless steel protection rails at the cleats and gateways

**Anchor system**

Electric windlass (Lewmar) Delta 20kg, 60 m x 8 mm chain  
Remote control windlass  
Bow fitting with double anchor rollers

**Skylights, Portlights, Windows**

5 x Skylights  
11 x Portlights  
2 x Dorado vents  
4 x Deck ventilators, low type

**Teak**

Solid teak on deck, coach roof, swim platform and in cockpit area.  
Teak toe rail.

**Cockpit**

Fixed Windscreen  
2 x integrated grab rails at the outside of the windscreen  
Sprayhood, graphite grey  
Bimini with stainless steel frame, graphite grey  
Steering wheel, stainless steel, hide covered  
Varnished chart table and entrance  
Varnished cockpit table  
Cockpit locker

**Various deck equipment**

Life raft 6 person (Viking RescYou ISO 9650) - serviced 2021  
Stainless steel pushpit with integrated (G&T) teak seats  
Flag pole  
Shower at swim platform  
Swim/safety ladder  
Lifelines gates

**Reservations**

Berthon Scandinavia has summarized information from the seller regarding the yacht and the equipment in this document. When establishing specifications, errors can occur, such as misunderstandings or printing errors. The buyer is responsible for inspecting and verifying that the information in this specification is correct. We therefore recommend and encourage the buyer to check the yacht and the equipment by himself and to hire an authorized surveyor to verify this specification and the yacht's general condition.

**For further information and booking of viewing please contact:**

Magnus Kullberg  
+46 79 079 55 45  
[magnus.kullberg@berthonscandinavia.se](mailto:magnus.kullberg@berthonscandinavia.se)  
[www.berthonscandinavia.se](http://www.berthonscandinavia.se)

# BERTHON

SCANDINAVIA

