



## IRRISISTIBLE II

LOA:	50'3" / 15.32m
Year:	2017
LWL:	47'6" / 14.48m
Beam:	15'2 / 4.63m
Draft:	8 / 2.45m
Displacement:	22,251kg / 49,055lb
Hull Material:	E-Glass Vinylester
Engine:	1 x Yanmar 4JH110
Designer:	Najad AB/ Judel/Vroljik
Accommodation:	4 berths in 2 cabins
Builder:	Najad AB, Sweden
Location:	Split, Croatia
Price:	SEK6,400,000 ex. EU VAT



# BERTHON

INTERNATIONAL YACHT BROKERS

Ängsvägen 16, 473 33 Henån

T: +46 304 694 000

E: [brokers@berthonscandinavia.se](mailto:brokers@berthonscandinavia.se)

W: [www.berthonscandinavia.com](http://www.berthonscandinavia.com)

### Disclaimer

*These particulars have been prepared from information provided by the vendors and are intended as a general guide to the yacht, their accuracy cannot be guaranteed by us. The purchaser should confirm details of concern to them by survey or engineer's inspection. The purchaser should also ensure that the purchase contract properly reflects their concerns and specifies details on which they may wish to rely.*

**Broker's Comments:**

We think Najad 505 IRRISISTIBLE II is a truly unique yacht in her class. As a 50-foot comfortable cruiser - she is extremely efficient in the water and responsive at the helm. She is safe and stable in the toughest of conditions due to her sturdy construction and robust design. This is of course in line with what you would expect from a real Najad. The hull is shaped for excellent wave piercing capabilities, both under sail and under power. This is key for comfort on long distance cruising. All these characteristics and easy handling by a short- or single-handed crew gives you safety, freedom and flexibility when crossing oceans and when enjoying coastal archipelago sailing.

The deck layout offers clean open deck areas with flushed skylights and deck hatches. The safe and well protected (very) large centre cockpit, with comfortable seating for 6 persons, is located close to the centre of gravity. The helm's central position gives the helmsman close access to all important equipment such as winches, sailing gear and the navigation station. The cockpit's central location provides safety in difficult sea conditions as well as easy handling. Aft of the cockpit is a large sun bathing deck. The wide transom with the large bathing platform is perfect for water sport activities.

When this Najad 505 was delivered to the current (first) owner she was transported directly from the factory by road to the Mediterranean Sea. IRRISISTIBLE II has been lightly used for family sailing, has been very well maintained and is in excellent condition.

Ready for new adventures!

**Key Facts:**

- Layout: Sleep 4 in 2 double berth cabins. Owners aft cabin with en suite heads / shower, forward guest cabin with en suite heads / shower, saloon with navigation area, galley 2 x heads / shower.
- Electric in-mast furling.
- Electric winch for out haul (Andersen 46).
- Electric genoa furling.
- 2 x Electric genoa winches (Andersen 68 proportional speed).
- Hydraulic boom vang and aft stay, cockpit manoeuvred.
- Main sail and working jib of X-Drive Carbon, double grey Taffeta (UK sails).
- Code 0 on furler.
- Electric windlass (Lofrance 2kW), 40 kg anchor, 80 m chain.
- Yanmar 110 hp.
- Bow and Stern thruster with docking function.
- Air conditioning.
- Watermaker.
- Washing machine.
- Generator.
- Gangway (carbon).
- Liferaft.
- Carbon steering wheel.
- Complete navigation system (Raymarine).

**Disclaimer**

*These particulars have been prepared from information provided by the vendors and are intended as a general guide to the yacht, their accuracy cannot be guaranteed by us. The purchaser should confirm details of concern to them by survey or engineer's inspection. The purchaser should also ensure that the purchase contract properly reflects their concerns and specifies details on which they may wish to rely.*

**Construction:**

*RCD Status: The yacht conforms with the essential safety requirements of Directive 94/25EC or RCDII (2013/53/EU as appropriate (Recreational Craft Directive) and is categorised A – “Ocean” (or Cat B – whichever is appropriate)*

**Hull, Deck & Superstructure Construction:**

- White hull with grey trim lines.
- Vacuum infused hull in sandwich construction including multi-axial E-glass mats, vinylester resin and Divinycell core material. The surface layer is gelcoat.
- Deck in hand-laid iso polyester resin with multiaxial sewn roving in a sandwich construction Divinycell core.
- The hull and deck are reinforced in exposed areas.
- The main bulkheads are laminated to the hull and deck.
- Solid teak on deck, coach roof, swim platform and in cockpit area.
- Teak capping fitted with stainless steel rail on the outside for best possible protection.

**Keel & Rudder:**

- Cast iron keel with delta formed lead bulb.
- Acid resistant stainless-steel bolts cast in the lead keel.
- Spade rudder with 2 x bearings including lower spherical bearing.

**Machinery:****Engine & Gearboxes:**

- 1 x Yanmar 4JH110CR 110 hp / 3200 rpm, approx. 200 hrs.
- 2 x Fuel pre filters.

**Propulsion & Steering:**

- Folding-propeller (Flexofold).
- Bow and Stern thruster, bow thruster in tunnel and stern thruster retractable, progressive power and docking function.

**Electrical Systems:****Voltage Systems:**

- 12 V equipment runs from service batteries via a DC/DC transformer (24V / 12V).
- Electrical system is mainly connected to an Empir bus system which controls the majority of the functions.
- 2 x 12 V outlet at nav. area.
- 220 V outlets in all cabins.
- Ground fault circuit breakers.
- Fuse box and shore cable.

**Battery Banks:**

- Service batteries (AGM): 24 V / 450 Ah
- Start battery (AGM): 12V / 150 Ah
- Bow thruster (AGM): 24 V 200 Ah (2 x 12 V 200 Ah)
- Stern thruster (AGM): 24 V 140 Ah (2 x 12 V 140 Ah)

**Battery Chargers:**

- Combi charger.
- Inverter 24V / 100A / 3500 W, with DC monitoring system.

**Disclaimer**

*These particulars have been prepared from information provided by the vendors and are intended as a general guide to the yacht, their accuracy cannot be guaranteed by us. The purchaser should confirm details of concern to them by survey or engineer's inspection. The purchaser should also ensure that the purchase contract properly reflects their concerns and specifies details on which they may wish to rely.*

**Alternators:**

- 2 x engine alternators 24V / 65 A (Total 24V / 130 A).

**Generator:**

- Generator, variable speed, approx. 8 kWA, 230V, 50Hz (Fisher Panda 10.000 i).
- Exhaust separator for generator.

**Shore Power:**

- 220 V shore power system.

**Other Electrical:**

- Isolation-transformer.

**Plumbing Systems:****Fresh Water & Water Heating System:**

- Hot water boiler of 40 litres.
- Fresh water pump.

**Watermaker:**

- Watermaker approx. 60l/h (Spectra).

**Bilge Pumps:**

- Electric emergency pump.
- Electric auto/man bilge pump.
- Electric bilge pump (fore).
- Manual bilge pump.

**Grey & Black Water:**

- 2 x shower waste pump.

**Tankage:****Fuel:**

- Total fuel capacity of approx. 700 litres in 3 x stainless steel tanks.
- Fuel transfer pump.

**Fresh water:**

- Total water capacity of approx. 550 litres in 2 x stainless steel tanks.

**Grey/Blackwater holding tanks:**

- Total holding tank capacity of approx. 220 L (2 x stainless steel tanks) deck and sea evacuation.

**Other:**

- 2 x 2kg gas bottles.

**Navigation Equipment:**

- Compass, with light.
- 2 x Instruments (Raymarine i70).
- Autopilot (Raymarine p70).

**Disclaimer**

*These particulars have been prepared from information provided by the vendors and are intended as a general guide to the yacht, their accuracy cannot be guaranteed by us. The purchaser should confirm details of concern to them by survey or engineer's inspection. The purchaser should also ensure that the purchase contract properly reflects their concerns and specifies details on which they may wish to rely.*

- Plotter / Radar display (Raymarine E125 12" HybridTouch) with EU chart on Steering Pedestal.
- Plotter / Radar display (Raymarine E165 16" HybridTouch) at navigation station.
- Radar antenna (Raymarine Digital, 4KW 24" Colour HD).
- AIS 500 (transceiver).
- VHF (RAY 260e DSC).
- VHF (Ray 260e Second Station Kit).
- VHF speaker.
- Mast head combi antenna for VHF, FM/AM.
- Navtex (Furuno NX-300).

### **Domestic Equipment:**

#### *Galley:*

- Gas stove, 2 burners with oven and grill.
- Fan above cooker in galley.
- Gas valve remote control.
- Micro wave / hot air oven.
- Fridge with front opening door approx. 115 L with a small freezer compartment.
- Freezer/Fridge 40 L (water-cooled).
- Washing machine (in forward heads).

#### *Heads/Showers:*

- 2 x electric toilets.

#### *Heating & Ventilation:*

- 2 x diesel heaters (Eberspracher 5 kW + 4 kW) outlets in all cabins and heads.
- Air Condition system (forward- and aft cabin).

#### *Entertainment:*

- Stereo/CD with radio (Fusion BB 100 Blackbox).
- Speakers in saloon and cockpit.
- Router (Locomarine Yachtrouter).

#### *Lighting:*

- Ceiling and reading lights LED partly with dimmers.

### **Accommodation:**

#### *Summary of Accommodation:*

- 4 berths in 2 cabins (both double berths).
- Galley, 2 x heads / shower, saloon and navigation area.
- SKY sol blinds for portlights in the saloon incl. vinyl covered coaming.
- Sky screens at all skylights.
- Topping mattresses for all beds.
- ALCANTARA fabric for cushions.
- Handmade interior of selected African mahogany.
- Floor boards in varnished dark wood with inlaid stripes.
- Inspection hatches in floorboards.
- Headlining of creme white covered panels.
- Plenty of storage space in shelves, cabinets and closets.

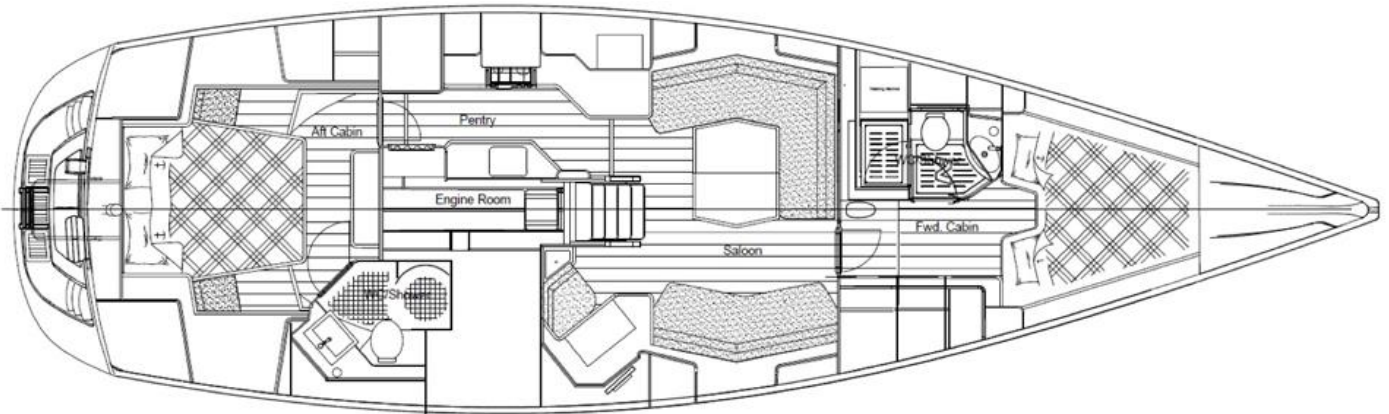
#### **Disclaimer**

*These particulars have been prepared from information provided by the vendors and are intended as a general guide to the yacht, their accuracy cannot be guaranteed by us. The purchaser should confirm details of concern to them by survey or engineer's inspection. The purchaser should also ensure that the purchase contract properly reflects their concerns and specifies details on which they may wish to rely.*



- Good ventilation.

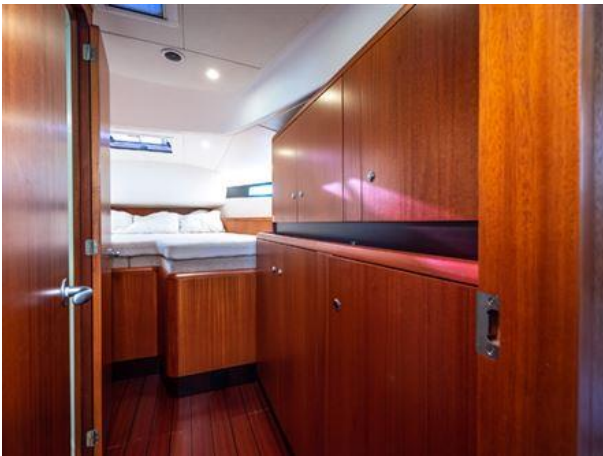
#### *Internal Layout:*



#### *Description of layout from forwards:*

##### *Forward Cabin:*

- Full width double berth and a wardrobe on the starboard side with spacious cupboards underneath.
- Large stowage facility underneath the berth.
- An opening skylight can be used as an emergency exit or for ventilation purpose.
- A heads/shower is located directly to port within the area of the forward cabin.



#### **Disclaimer**

*These particulars have been prepared from information provided by the vendors and are intended as a general guide to the yacht, their accuracy cannot be guaranteed by us. The purchaser should confirm details of concern to them by survey or engineer's inspection. The purchaser should also ensure that the purchase contract properly reflects their concerns and specifies details on which they may wish to rely.*



*Forward Heads / Shower:*

- Light and spacious.
- Built with white laminated bulkheads including wash basin, bench surface and shower floor made of Kerock® material.
- Electrical toilet.
- Mirror.



**Disclaimer**

*These particulars have been prepared from information provided by the vendors and are intended as a general guide to the yacht, their accuracy cannot be guaranteed by us. The purchaser should confirm details of concern to them by survey or engineer's inspection. The purchaser should also ensure that the purchase contract properly reflects their concerns and specifies details on which they may wish to rely.*





### Saloon:

- Exclusive entrance stairs with shaped footsteps and stainless steel handrail covered with leather.
- Foldable table with a locker for bottles.
- Sofas to PT and SB, plenty of cabinets and book shelves.



### Disclaimer

*These particulars have been prepared from information provided by the vendors and are intended as a general guide to the yacht, their accuracy cannot be guaranteed by us. The purchaser should confirm details of concern to them by survey or engineer's inspection. The purchaser should also ensure that the purchase contract properly reflects their concerns and specifies details on which they may wish to rely.*





#### Navigation Area:

- Navigations area to starboard of the entrance stairs.
- Large navigation table, drawers, comfortable seat and space for instruments.



#### Disclaimer

*These particulars have been prepared from information provided by the vendors and are intended as a general guide to the yacht, their accuracy cannot be guaranteed by us. The purchaser should confirm details of concern to them by survey or engineer's inspection. The purchaser should also ensure that the purchase contract properly reflects their concerns and specifies details on which they may wish to rely.*



#### Galley:

- The galley is located to PT of the entrance stairs, extending aft.
- Plenty of storage spaces, cupboards, drawers, dry storage and shelves.
- Kerock® worktop with twin sinks and a chopping board over one sink.



#### Aft cabin (Owners cabin):

- A passageway on the port leads to the aft cabin, which includes a wide double berth amidships and sufficient storage for extended periods at sea.
- Seats on each side of the berth.
- Spot lights and reading lights positioned for comfortable reading.
- The bed base is unvarnished and ventilated with holes to minimise dampness.

#### Disclaimer

*These particulars have been prepared from information provided by the vendors and are intended as a general guide to the yacht, their accuracy cannot be guaranteed by us. The purchaser should confirm details of concern to them by survey or engineer's inspection. The purchaser should also ensure that the purchase contract properly reflects their concerns and specifies details on which they may wish to rely.*



- Two fixed portholes in the hull and two openable skylights for ventilation.
- Heads/shower is located to starboard with entrance from the aft cabin.



#### *Aft Heads / Shower:*

- Light and very spacious.
- Built with white laminated bulkheads including wash basin, bench surface and shower floor made of Kerock® material.
- Electrical toilet.
- Mirror.
- Clothes rack in the shower, detachable.

#### **Disclaimer**

*These particulars have been prepared from information provided by the vendors and are intended as a general guide to the yacht, their accuracy cannot be guaranteed by us. The purchaser should confirm details of concern to them by survey or engineer's inspection. The purchaser should also ensure that the purchase contract properly reflects their concerns and specifies details on which they may wish to rely.*

**Disclaimer**

*These particulars have been prepared from information provided by the vendors and are intended as a general guide to the yacht, their accuracy cannot be guaranteed by us. The purchaser should confirm details of concern to them by survey or engineer's inspection. The purchaser should also ensure that the purchase contract properly reflects their concerns and specifies details on which they may wish to rely.*



**Deck Equipment:***Cockpit:*

- High gloss varnished entrance.
- Varnished cockpit table.
- Stainless steel grab rail at the pedestal.
- Cockpit locker.

**Disclaimer**

*These particulars have been prepared from information provided by the vendors and are intended as a general guide to the yacht, their accuracy cannot be guaranteed by us. The purchaser should confirm details of concern to them by survey or engineer's inspection. The purchaser should also ensure that the purchase contract properly reflects their concerns and specifies details on which they may wish to rely.*



**Disclaimer**

*These particulars have been prepared from information provided by the vendors and are intended as a general guide to the yacht, their accuracy cannot be guaranteed by us. The purchaser should confirm details of concern to them by survey or engineer's inspection. The purchaser should also ensure that the purchase contract properly reflects their concerns and specifies details on which they may wish to rely.*





#### Rig:

- Electric In-mast Furling.
- Electric Furlex for genoa.
- Hydraulic boom vang and aft stay, manoeuvred from cockpit.
- Stainless steel turnbuckles.
- Aluminium rigging screw protection.
- Deck lights in front of mast.
- Light under boom in cockpit.
- Steaming and anchor lights.
- Flag halyards.
- Windex.

#### Disclaimer

*These particulars have been prepared from information provided by the vendors and are intended as a general guide to the yacht, their accuracy cannot be guaranteed by us. The purchaser should confirm details of concern to them by survey or engineer's inspection. The purchaser should also ensure that the purchase contract properly reflects their concerns and specifies details on which they may wish to rely.*

**Winches:**

- 1 x mainsail / outhaul winch (Andersen 46 STE).
- 1 x mainsail winch (Andersen 46 ST).
- 2 x halyard winches (Andersen 46 ST).

**Sails:**

- Furling main sail (X-Drive Carbon, double grey Taffeta).
- Furling working jib (X-Drive carbon, double grey Taffeta).
- Code 0 including Selden CX furler and halyard winches.
- 2 x electrical genoa winches (Andersen 68 STE Vario).

**Skylights, Portlights, Windows:**

- Skylights flush mounted.
- Portlights in coach roof, open able in forward heads and forward cabin.
- Fixed portlights in hull.
- 6 x deck ventilators, low type.
- Fixed windscreen (stainless steel frame).
- 2 x integrated grab rails (stainless steel) at the windscreen.
- Ventilation louvers in the companionway hatch.

**General:**

- Carbon gangway.
- Pushpit teak fitting for outboard.
- Outboard crane mounted on pushpit.
- Stainless steel pushpit with integrated (G&T) teak seats.
- Flag pole.
- Shower at swim platform.
- Swim/safety ladder.

**Anchoring & Mooring Equipment:**

- Electric windlass (Lofrans project 2000), Delta 40k g, 80 m x 12 mm chain.
- 4 x cleats stainless steel.
- 4 x spring cleats stainless steel.
- 6 x mooring lines.
- 6 x Fenders.
- Stainless steel protection rails at the cleats and gateways.
- Retractable mooring winch on fore deck (Sanguinetti).
- Lifelines gates.

**Covers, Canvas & Cushions:**

- Sprayhood and Sprayhood extension, graphite grey.
- Bimini with stainless steel frame, graphite grey.
- Steering wheel, stainless steel, hide covered.
- Canvas cover for table and winches.
- Cockpit cushions, graphite grey.

**Safety Equipment:**

- Life raft 6 persons – service needed.

**Disclaimer**

*These particulars have been prepared from information provided by the vendors and are intended as a general guide to the yacht, their accuracy cannot be guaranteed by us. The purchaser should confirm details of concern to them by survey or engineer's inspection. The purchaser should also ensure that the purchase contract properly reflects their concerns and specifies details on which they may wish to rely.*



**Fire-fighting equipment:**

- 1 x fire extinguisher.

**Disclaimer**

*These particulars have been prepared from information provided by the vendors and are intended as a general guide to the yacht, their accuracy cannot be guaranteed by us. The purchaser should confirm details of concern to them by survey or engineer's inspection. The purchaser should also ensure that the purchase contract properly reflects their concerns and specifies details on which they may wish to rely.*





**Disclaimer**

*These particulars have been prepared from information provided by the vendors and are intended as a general guide to the yacht, their accuracy cannot be guaranteed by us. The purchaser should confirm details of concern to them by survey or engineer's inspection. The purchaser should also ensure that the purchase contract properly reflects their concerns and specifies details on which they may wish to rely.*



**Disclaimer**

*These particulars have been prepared from information provided by the vendors and are intended as a general guide to the yacht, their accuracy cannot be guaranteed by us. The purchaser should confirm details of concern to them by survey or engineer's inspection. The purchaser should also ensure that the purchase contract properly reflects their concerns and specifies details on which they may wish to rely.*



**Disclaimer**

*These particulars have been prepared from information provided by the vendors and are intended as a general guide to the yacht, their accuracy cannot be guaranteed by us. The purchaser should confirm details of concern to them by survey or engineer's inspection. The purchaser should also ensure that the purchase contract properly reflects their concerns and specifies details on which they may wish to rely.*



**Disclaimer**

*These particulars have been prepared from information provided by the vendors and are intended as a general guide to the yacht, their accuracy cannot be guaranteed by us. The purchaser should confirm details of concern to them by survey or engineer's inspection. The purchaser should also ensure that the purchase contract properly reflects their concerns and specifies details on which they may wish to rely.*



**Disclaimer**

*These particulars have been prepared from information provided by the vendors and are intended as a general guide to the yacht, their accuracy cannot be guaranteed by us. The purchaser should confirm details of concern to them by survey or engineer's inspection. The purchaser should also ensure that the purchase contract properly reflects their concerns and specifies details on which they may wish to rely.*



**Disclaimer**

*These particulars have been prepared from information provided by the vendors and are intended as a general guide to the yacht, their accuracy cannot be guaranteed by us. The purchaser should confirm details of concern to them by survey or engineer's inspection. The purchaser should also ensure that the purchase contract properly reflects their concerns and specifies details on which they may wish to rely.*

**BERTHON**

synonymous with yachting since 1877