



## MISTRAL

LOA:	36'6" / 11.14m
Year:	2008
Beam:	11'5" / 3.5m
Draft:	2'11" / 0.9m
Displacement:	6,500kg / 14,330lb
Hull Material:	GRP
Engines:	2 x Volvo Penta D4-300hp
Designer:	Hans J Johnsen
Accommodation:	6 berths in 2 cabins
Builder:	Windy Boats AS
Location:	Henån, Sweden
Price:	SEK2,150,000 VAT paid

# BERTHON

INTERNATIONAL YACHT BROKERS

Ängsvägen 16, 473 33 Henån

T: +46 304 694 000

E: [brokers@berthonscandinavia.se](mailto:brokers@berthonscandinavia.se)

W: [www.berthonscandinavia.com](http://www.berthonscandinavia.com)

### Disclaimer

*These particulars have been prepared from information provided by the vendors and are intended as a general guide to the yacht, their accuracy cannot be guaranteed by us. The purchaser should confirm details of concern to them by survey or engineer's inspection. The purchaser should also ensure that the purchase contract properly reflects their concerns and specifies details on which they may wish to rely.*

**Broker's Comments:**

The Windy 37 Grand Mistral is one of the most popular models from the Windy Boats AS Norwegian shipyard. She is still considered one of the most accomplished sports cruiser boats ever built - thanks to the fine seaworthiness, high quality craftsmanship and generous spaces both under deck and in the cockpit. The hull of the Windy 37 Grand Mistral is something very special, not only because of the safety at sea but also the fuel economy is class-leading, something that can take you to places that other boat owners can only dream of. Add to that, the fact that she's really fun to drive!

We now have the pleasure of offering this very fine, Swedish-sold and well-kept boat for sale. The current third owner has done a fantastic job and updated most things on-board, including new instruments from Raymarine, automatic trim tabs from Mente Marine and new software from Volvo Penta. The boat's hull has had new bottom treatment, and the dashboard has been given a new modern look with the help of gray Nextel color. MISTRAL has the larger D4 engines with 300hp, has been perfectly maintained and had an interior facelift in satin lacquered cherry. Whether you like to do longer distances at sea, enjoy a natural harbor or stay in a marina, this boat has all the necessary equipment to make your life on-board as easy and pleasant as possible. She will be popular, book your viewing today!

**Key Facts:**

- Swedish sold Windy 37 Grand Mistral.
- 2 x Volvo Penta D4-300 DPH.
- 6 berths.
- Electric windlass in bow and stern.
- Bowthruster.
- Mente Marine trim tab automatic.
- Diesel generator 3.5kw, Mastervolt.
- AGM deep cycle batteries.
- New plotter and new instruments, Raymarine.
- Upgraded software from Volvo Penta.
- AIS.
- New epoxy and antifouling.
- Davit for RIB on stern platform, TG3.
- Electric toilet, new hoses.
- Diesel heater, Eberspächer.
- Fridge and wetbar in cockpit.

**Owner's Comments:**

This Windy 37 Grand Mistral, MISTRAL has been in the family's possession since 2018. The boat has been maintained and upgraded continuously with, among other things, a total bottom renovation (sanded down to gelcoat, then new epoxy and paint added). We have replaced most of the boat's navigation equipment and have also modernized the dashboard in Nextel anti-reflective paint. Engines and drive legs are continuously proactively maintained and during the winter of 2022, the drive legs have received new gear cones and an overhaul of the hydraulics, in addition to the usual service.

The boat is equipped with the largest D4 engines, for real power, and a comfortable cruising speed of about 30 knots. Amenities such as Penta Easy Connect, Penta Trip Computer, Penta Power Trim assist, Mente Marine automatic trim tabs and modern navigation equipment (plotter, ais, autopilot, multifunction instrument, etc.) make the boat easy to maneuver and safe to drive. The boat is equipped for longer stays in a natural harbor with a large battery bank and Mastervolt diesel generator for 230V and battery charging, large septic and water tank, bowsprit with retractable ladder, and electric anchor winch in the bow and stern. On the bathing platform there is a detachable davit (TG3)

**Disclaimer**

*These particulars have been prepared from information provided by the vendors and are intended as a general guide to the yacht, their accuracy cannot be guaranteed by us. The purchaser should confirm details of concern to them by survey or engineer's inspection. The purchaser should also ensure that the purchase contract properly reflects their concerns and specifies details on which they may wish to rely.*

adapted for a heavier RIB / Jet Ski.

### Construction:

*RCD Status: The yacht conforms with the essential safety requirements of Directive 94/25EC or RCDII (2013/53/EU as appropriate (Recreational Craft Directive) and is categorised A – “Ocean” (or Cat B – whichever is appropriate)*

#### *Hull, Deck & Superstructure Construction:*

- White hull with blue hull-stripe, blue gelcoat.
- Hull and deck in GRP, sandwich construction with Divinycell.
- Refurbished underwater body, new epoxy and antifouling (2019).
- Teak in cockpit, bathing platform, sidewalks and foredeck.

### Machinery:

#### *Engine & Gearboxes:*

- 2 x Volvo Penta D4 EVC 300hk diesel, approx. 720 hours.
- Volvo Penta DPH outdrives with G8 duo props.

*Performance indication: **Note – these figures are supplied by Volvo and are intended as a guide only:***

Revs, Knots, L/NM, L/H, DBA.

1000, 7.7, 0.80, 6.2, 71.

1500, 9.3, 1.96, 18.2, 79.

2000, 16.6, 1.89, 31.4, 79.

2200, 20.1, 1.93, 38.8, 79.

2400, 24.0, 1.79, 43.0, 79.

2600, 27.9, 2.01, 56.2, 79.

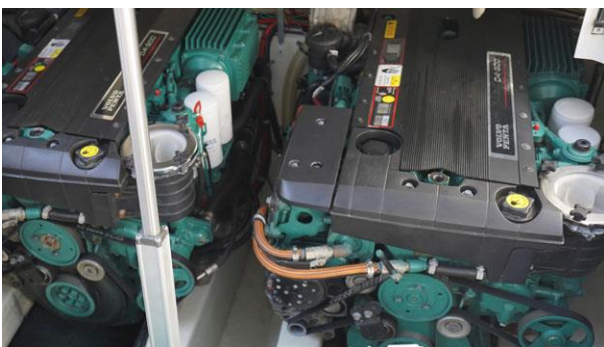
2800, 30.8, 2.17, 66.8, 80.

3000, 33.9, 2.19, 74.2, 81.

3200, 36.8, 2.27, 83.6, 82.

3400, 39.3, 2.43, 95.6, 84.

3570, 41.3, 2.73, 112.7, 85.



### Disclaimer

*These particulars have been prepared from information provided by the vendors and are intended as a general guide to the yacht, their accuracy cannot be guaranteed by us. The purchaser should confirm details of concern to them by survey or engineer's inspection. The purchaser should also ensure that the purchase contract properly reflects their concerns and specifies details on which they may wish to rely.*





#### *Maintenance & Performance:*

- In addition to annual service on engines and outdrives -
- Full drive leg service incl. repack and shims (2018).
- Replacement of pulleys, steel, both engines (2019).
- Cooling system cleaned, coolant changed to "yellow" (2020).
- Refurbished props (2020).
- Air cooler portside engine renovated, repacked, new side (2021).
- Outdrive control, no water in the oil (2021/22).
- Steering cylinder portside leg renovated (2022).
- Drive legs new gear cones (2022).

#### *Propulsion & Steering:*

- Bowthruster (Side-Power).
- Trim tab ACS-RP (Mente Marine), new instrument (2019).
- Dashboard repainted, Nextel anti-reflective paint (2019).
- New steering wheel (2019).

#### **Electrical Systems:**

##### *Voltage Systems:*

- DC control panel.

##### *Battery Banks:*

- 12V service battery deep cycle AGM 4 x 105 Ah (2018/2020).
- 12V start battery deep cycle AGM 105 Ah (2018).

##### *Battery Chargers:*

- Battery charger 12V/50A (Mastervolt).
- Battery monitor panel (Mastervolt).

##### *Alternators:*

- 2 x Alternators 12V/115A.

##### *Generator:*

- Diesel generator 3.5kw (Mastervolt Whisper), service (2020).

##### *Shore Power:*

- 220V shore power with breaker.

#### **Disclaimer**

*These particulars have been prepared from information provided by the vendors and are intended as a general guide to the yacht, their accuracy cannot be guaranteed by us. The purchaser should confirm details of concern to them by survey or engineer's inspection. The purchaser should also ensure that the purchase contract properly reflects their concerns and specifies details on which they may wish to rely.*

**Plumbing Systems:***Fresh Water & Water Heating System:*

- 40 litre hot water capacity.

*Bilge Pumps:*

- Manual bilge pump.
- Electric bilge pump.

**Tankage:**

- 1 x Gas bottle.

*Fuel:*

- Approx. 800 L (aluminium).

*Fresh water:*

- Approx. 200 L (aluminium).

*Grey/Blackwater holding tanks:*

- 1 x 120 L (aluminium), new hoses and tank (2021).

**Navigation Equipment:**

- 1 x Compass with light.
- Plotter Axiom Pro 12RVX (Raymarine) (2019).
- Autopilot EV-100 (Raymarine) (2019).
- Autopilot instrument P70R (Raymarine) (2019).
- Multi instrument I70S (Raymarine) (2019).
- AIS 700 (Raymarine) (2019).
- Trip computer (Volvo Penta) (2019).
- Power trim assist (Volvo Penta) (2019).
- Easy connect NMEA, gateway and wifi (Volvo Penta) (2019).
- VHF Ray240 (Raymarine) (2019).
- Ekolod/sonar B744V (Raymarine).

**Domestic Equipment:**

- Wetbar with fridge to cockpit.

*Galley:*

- Gas oven and hob.
- Stainless sink with mix tap.
- Fridge with door.
- Microwave oven (2018).

*Heads/Showers:*

- Electric toilet with large black water tank and 3-way valve.
- Sink with tap, shower.
- Shower on bathing platform, hot and cold water.

**Disclaimer**

*These particulars have been prepared from information provided by the vendors and are intended as a general guide to the yacht, their accuracy cannot be guaranteed by us. The purchaser should confirm details of concern to them by survey or engineer's inspection. The purchaser should also ensure that the purchase contract properly reflects their concerns and specifies details on which they may wish to rely.*

**Heating & Ventilation:**

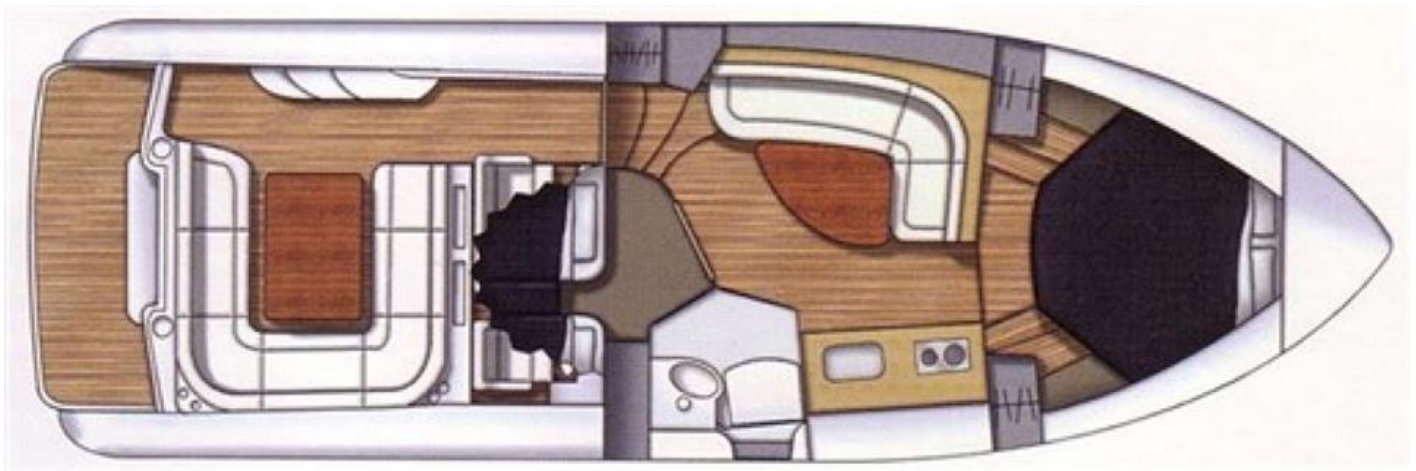
- Diesel heater 5kw (Eberspächer), outlets in saloon, cabins, head and cockpit.

**Entertainment:**

- Hi-Fi.
- Radio/CD, 4 x speaker in saloon.
- Extra stereo in amidships cabin, 2-speakers.
- TV in saloon (2018).
- Apple TV & Airport Express 12V (2018).
- 4G router (2018).

**Accommodation:****Summary of Accommodation:**

- Interior in satin-gloss lacquered cherry.
- Leather panels on bulkhead.
- White ceiling.
- 6 berths, owners's cabin + double bed amidship and occasional saloon double berth conversion with infill.
- Head with shower.
- L-sofa with table on port side.
- Amble of space for storage.
- Ship clock and barometer.
- Varnished floorboards.

**Internal Layout:****Description of layout from forwards:****Forward Cabin (Owner's):**

- Owner's cabin with double bed, storage under bed.
- Tailor-made bed mattress.
- Large lockers and drawers.
- 2 x Wardrobes.
- Skylight and portlights.
- Reading lights.

**Disclaimer**

*These particulars have been prepared from information provided by the vendors and are intended as a general guide to the yacht, their accuracy cannot be guaranteed by us. The purchaser should confirm details of concern to them by survey or engineer's inspection. The purchaser should also ensure that the purchase contract properly reflects their concerns and specifies details on which they may wish to rely.*

**Saloon:**

- Spacious saloon, L-sofa for 4 persons.
- Table for conversion to extra bed (no mattress).
- Cupboards and bookshelves.
- Good possibilities for storage.
- Cocktail cabinet.
- 2 x Portlights and skylight, opening.
- Spotlights.

**Disclaimer**

*These particulars have been prepared from information provided by the vendors and are intended as a general guide to the yacht, their accuracy cannot be guaranteed by us. The purchaser should confirm details of concern to them by survey or engineer's inspection. The purchaser should also ensure that the purchase contract properly reflects their concerns and specifies details on which they may wish to rely.*





#### Galley:

- Kitchen on starboard side of the entrance.
- Cupboards, drawers and shelves for storage.



#### Head with Shower:

- Double door, entrance from saloon and aft cabin.
- Mirror on bulkhead.
- Specially made teak floor grating.
- Specially made cupboard under sink.



#### Aft Cabin (Amidship):

- Large aft cabin with double bed.
- Tailor-made bed mattress.

#### Disclaimer

These particulars have been prepared from information provided by the vendors and are intended as a general guide to the yacht, their accuracy cannot be guaranteed by us. The purchaser should confirm details of concern to them by survey or engineer's inspection. The purchaser should also ensure that the purchase contract properly reflects their concerns and specifies details on which they may wish to rely.



- Locker for storage.
- Opening portlights.
- Reading lights.



### Deck Equipment:

#### General:

- Large U-sofa with blue cushions (Sunbrella), white piping.
- The sofa can be converted into a large sun lounge, lowerable table / cushion.
- Electrically operated hydraulic motor hatch.
- Windscreen demister and wipers with washer.
- Stainless steel handholds.
- 2 x Skylights.
- 8 x Portlights.
- Bowsprit with integrated ladder.
- New varnish at cockpit table (2022).

#### Anchoring & Mooring Equipment:

- 6 x Mooring cleats, stainless steel.
- 4 x Mooring lines.
- 4 x Fenders.
- Bow: Electric windlass 12V/1000W (Lewmar), Bruce stainless steel anchor with chain.
- Stern: Electric windlass (Engbo), Bruce stainless steel anchor with line.
- Remote control to bowthruster and stern windlass, new/not installed.

#### Covers, Canvas & Cushions:

- Cockpit canopy, blue tradtex (Helly Hansen), recondition (2021).

#### Tender & Outboard:

- Davits for RIB on platform (TG3) (2019).

#### Fire-fighting equipment:

- 2 x Fire extinguishers.

### Disclaimer

*These particulars have been prepared from information provided by the vendors and are intended as a general guide to the yacht, their accuracy cannot be guaranteed by us. The purchaser should confirm details of concern to them by survey or engineer's inspection. The purchaser should also ensure that the purchase contract properly reflects their concerns and specifies details on which they may wish to rely.*

**Disclaimer**

*These particulars have been prepared from information provided by the vendors and are intended as a general guide to the yacht, their accuracy cannot be guaranteed by us. The purchaser should confirm details of concern to them by survey or engineer's inspection. The purchaser should also ensure that the purchase contract properly reflects their concerns and specifies details on which they may wish to rely.*



**Disclaimer**

*These particulars have been prepared from information provided by the vendors and are intended as a general guide to the yacht, their accuracy cannot be guaranteed by us. The purchaser should confirm details of concern to them by survey or engineer's inspection. The purchaser should also ensure that the purchase contract properly reflects their concerns and specifies details on which they may wish to rely.*



**Disclaimer**

*These particulars have been prepared from information provided by the vendors and are intended as a general guide to the yacht, their accuracy cannot be guaranteed by us. The purchaser should confirm details of concern to them by survey or engineer's inspection. The purchaser should also ensure that the purchase contract properly reflects their concerns and specifies details on which they may wish to rely.*