



Malö 40-129 / 2008

Detailed specification

DATA

Year:	2008
LOA:	39'8" / 12.1 m
LWL:	34'5" / 10.5 m
Beam:	12'7" / 3.83 m
Draft:	6' / 1.83 m
Displacement:	9,950kg / 21,936lb
Engine:	Yanmar 4JH4AE 54 hp
Designer:	Leif Ångemark
Builder:	Malö Yachts AB
Location:	Henån, Sweden
Price:	SEK 2.950.000 VAT paid in EU

BROKER'S COMMENT

The Malö 40 is a solid offshore cruising yacht with a large cockpit, a generous saloon and 2 cabins. There is extensive storage space in 2 large cockpit lockers and throughout the interior.

The Malö 40 is built to be a solid cruising yacht. It is perfectly suited for a couple or a family that appreciate spending much time onboard. No matter if you are sailing or anchored, the Malö 40 is a very comfortable and functional yacht.

The cockpit is relatively large and offers plenty of storage in two large cockpit lockers. Since the main sheet system is mounted on top of the characteristic Malö targa arch, the cockpit is safe and without clutter. The deck, coach roof, cockpit and swim platform are covered with teak.

The interior is made of selected mahogany, manufactured, and installed by the skilled craft men at Malö varvet AB.

Malö 40-129 was delivered to its first owner in 2008. The current owner bought it in 2020. Malö 40-129 has been sailed in Scandinavian waters and always been professionally maintained. From September to April each year

she has been stored ashore in a heated hall. A combination of this maintenance schedule, light use and many recent upgrades, means Malö 40-129 is in a good condition. The equipment list includes, for example, in-mast furling, electric winches, bow and stern thrusters and davits.

If you are searching for a recently upgraded Orust built yacht in the 40-foot size, in very good general condition, capable of fulfilling any sailing plans, Malö 40-129 might be the yacht for you...

KEY FACTS

- Sleep 4 in 2 cabins
- Furling mast
- Code 1 - 2021
- 4 x Electric winches
- Yanmar 4JH4AE 54 hp
- Bow thruster (speed controlled)
- Stern thruster (speed controlled)
- Fuel cell (EFOY Comfort 140)
- Radar (Raymarine Quantum 2) – 2021
- MFD (Raymarine Axiom 9) – 2021
- Autopilot Raymarine (Evolution)
- 3 x Multi instrument (Raymarine I70) - 2021
- AIS
- Davits - 2021

CONSTRUCTION

Certification

This yacht is CE certified and is delivered with a CE certificate and a CE plaque for category A (unlimited ocean voyages).

Hull and deck

The colour of the hull is white, with a blue decorative stripe

Hull is built with GRP.

On both hull sides are an integrated rubbing strake with stainless steel strip, to protect the hull sides when mooring.

There is an integrated swimming platform at the transom.

Solid teak, screwed and glued on the deck, coach roof, swim platform and in cockpit area

Keel & Rudder

Lead keel

Skeg hung rudder

Emergency tiller

TECHNICAL SYSTEMS

Engine and propulsion

Stern thruster, retractable, speed controlled (Side power SRL 100) - 2020

Bow thruster (Sidepower)

Speed control for bow thruster - 2020

Yanmar 54 hp, approx. 1500 hrs (engine hrs display out of function)

Cutless bearing - 2020

Line cutter (Spurs) - 2020

Diesel cleaning module (Volvo Penta)

Flexible shaft coupling (Aqua drive)

3 blade folding propeller (Flexofold)

Tanks

Fuel approx. 260 L (stainless steel tank)

Water approx. 450 L (2 x stainless steel tanks)

Holding approx. 60 L (stainless steel tank)

Hot water boiler approx. 20 L

220 V element and thermostat replaced – 2019

2 x Gas bottles

Pumps

Electric bilge pump
Manual bilge pump
Shower waste pumps
Electric freshwater pump
Sea water pump (for anchor- and deck cleaning)

Electrical system

Shore power system 220 V, Earth fault breaker, Shore cable 15 m
220 V current control panel - 2021
Switch panel with circuit breakers, water, fuel and volt gauges
Fuel cell (EFOY Comfort 140)
2 x Solar panels - 2021
Charger / inverter 12 V / 3000 W / 100 A (Mastervolt Combi master) - 2020
3 x 220 V outlets
Service batteries 420 Ah – 2018
Start battery 75 Ah – 2020
Stern thruster battery - 2020
2 x 12 V outlet

Navigation equipment

Compass, with light
3 x Multi instrument (Raymarine I70s) – 2020
Fart och Vindgivare - 2020
Radar (Raymarine Quantum 2 Q24D doppler) – 2020
Damped, self-adjustable, mounting bracket for radar on the back stay
MFD (Raymarine Axiom) – 2020
Autopilot (Raymarine Evolution, p70s control unit) - 2020
Passive Radar reflektor (Firdell Blipper)
VHF / DSC (Raymarine)
VHF speaker
Combi antenna (RR Panama)
AIS transceiver

Entertainment

TV, retractable - 2021
Stereo
2 x Speakers in the salon
2 x Speakers in the cockpit

Various onboard equipment

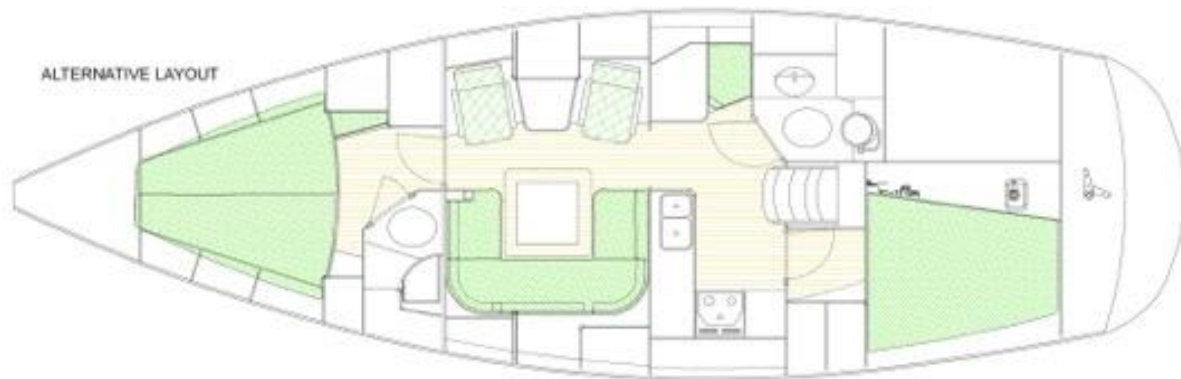
Diesel heater (Eberspracher D5L-C)
2 x Gas bottles
Gas hoses - 2020
3 x Fire extinguishers

INTERIOR

General

Sleep 4 + 1 persons in two cabins + saloon
Handmade interior of selected mahogany, varnished to a satin finish.
Blue coloured upholstery
Curtains fitted at all portlights
Fitted carpets throughout

Interior layout



NB! The forward cabin of Malö 40-129 has a v-berth allowing easy access to both berth and the navigation area do not have a seat (this space is used for more storage and a drawer fridge).

Forward owners' cabin

- V-berth with easy access
- Sprung mattresses
- Topping mattresses
- Storage under the berth
- 3 x Wardrobes
- Numerous cupboards
- Shelf
- Separate entrance to the shower cabin
- Large opening skylight

Shower cabin

- Light and spacious shower cabin
- Corian surface
- Corian floorboard
- Shower mixer - 2021
- Storage space

Saloon

- C-shaped sofa to PT
- Extendable saloon table
- 2 x Armchairs to SB
- Cupboards, book shelves and ample storage space
- Large opening skylight
- Special holder for glass
- Ship's clock, barometer, and hygrometer

Navigation area (SB of entrance)

- Chart table without seat
- Drawers
- Space for drawer fridge
- Space for instruments

Heads with shower (SB of entrance)

- Light and spacious heads with shower
- Manual marine toilet (Raritan) hoses and seal replaced - 2018
- Plenty of space for storage
- Corian floorboard
- Mixer tap with shower head
- Corian bench top
- Wash basin
- Access to large cockpit locker
- Opening portlight for ventilation

Galley (PT of entrance)

- Large L-shaped galley with plenty of storage space

Corian galley surface
Gas stove with two burners and oven / grill (ENO)
Manual shut-off valve for the gas
Fridge box, 12 V compressor, water cooled (Isotherm SP)
Additional drawer fridge built into the chart table
Double sinks
Mixer tap
Pull out teak cutting board
Opening portlight above the stove

Guest cabin (PT and aft of entrance)

Double berth
Sprung mattresses
Topping mattresses
Storage under the berth
Wardrobe
Cupboards
Shelves
2 x Opening portlights for ventilation

EXTERIOR

Rig

Furling mast, deck stepped, two pair of spreaders (Seldén)
Rod kick with gas damper
Mechanical back stay tensioner (Seldén) - 2020
Boom brake (ASB)
Furler for Genua (Harken)
Aluminium rigging screw protection
Deck light on the mast
3-color with anchor light
Passive radar reflector on the mast
Flag halyards
Windex

Sails

Furling Main sail with vertical battens (UK)
Furling Genoa (UK)
Sail cover for Genoa
Code 1 on furler - 2021
Gennaker in snuffer

Winches

2 x Electric Winches (Anderson 52)
2 x Electric Winches (Andersen 28)
2 x Manual Mast winches (Lewmar)

Mooring equipment

4 x Mooring lines
4 x Fenders
4 x Cleats (stainless steel)
2 x Spring cleats (stainless steel)
2 x Lifeline gates
Boarding steps for the bow (Timo) - 2020
Bow ladder
Boat hook

Anchoring system

Bow: Electric windlass, 20 kg stainless anchor (Bruce type), 40 m chain
Remote control with meter counter - 2020
Stern: Electric windlass, 15 kg anchor, 50 m weighted line

Cockpit

Malö original targa arch
Dimmed cockpit lights in the targa arch
Fixed wind screen with stainless frame

Grab rails on the windscreen
Sprayhood
Sprayhood extension (standing height)
Stainless steering wheel, hide covered
Grab rail at the pedestal
Cup holder in teak at the pedestal
Folding cockpit table in teak
2 x Pad eye for lifeline
Shower in the cockpit
Folding seat extension in teak

Various deck equipment

Davits - 2021
Liferaft 4 persons (service needed 2022)
G&T seats at the pushpit
Life buoy
Safety / Swim ladder
Teak holder for outboard
Flagpole

Reservations

Berthon Scandinavia has summarized information from the seller regarding the yacht and the equipment in this document. When establishing specifications, errors can occur, such as misunderstandings or printing errors.

The buyer is responsible for inspecting and verifying that the information in this specification is correct. We therefor recommend and encourage the buyer to check the yacht and the equipment by himself and to hire an authorized surveyor to verify this specification and the yacht's general condition.

The seller has the right to sell the boat to the buyer he wishes, regardless of the size of the bid.

For further information and booking of viewing please contact:

Magnus Kullberg

Berthon Scandinavia
+46 79 079 55 45
info@berthonscandinavia.se
www.berthonscandinavia.se