

HR43-173

LOA:	44'6" / 13.57m
Year:	2009
LWL:	38'7" / 11.75m
Beam:	13'6" / 4.08m
Draft:	6'7" / 2m
Displacement:	12,904kg / 28,448lb
Hull Material:	GRP
Engines:	1 x Volvo D2-75
Designer:	German Frers
Accommodation:	5 berths in 2 cabins
Builder:	Hallberg-Rassy
Location:	Henån, Sweden
Price:	€375,000 EU VAT paid

BERTHON

INTERNATIONAL YACHT BROKERS

Ångsvägen 16, 473 33 Henån

T: +46 304 694 000

E: brokers@berthonscandinavia.se

W: www.berthonscandinavia.com

Disclaimer

These particulars have been prepared from information provided by the vendors and are intended as a general guide to the yacht, their accuracy cannot be guaranteed by us. The purchaser should confirm details of concern to them by survey or engineer's inspection. The purchaser should also ensure that the purchase contract properly reflects their concerns and specifies details on which they may wish to rely.

Broker's Comments:

The Hallberg-Rassy 43 is a well-known yacht for comfortable, safe long-distance sailing, as well as for coastal sailing. Exterior and interior, has all the advantages that make sailing and living onboard a great experience. Her timeless lines make her a true classic. The large engine and generous tankage are also great features of the Hallberg-Rassy 43.

You can sit in safety in the cockpit, which is protected by a windscreen and which has a good overview of instruments, mast, sails and sea. The interior is spacious and has a practical, seagoing galley with everything within easy reach. The interior floor is on one level, making it is easy to move around. The yacht's two cabins offer plenty of space with two separate heads with shower.

The master cabin in the aft has a double and a single bed and plenty of storage space. The cabin in the bow is a spacious V-birth, also offering good storage. The large saloon has two full length sofas on each side with storage behind the backrests. There is comfortable seating around the beautiful saloon table, which has folding sides, allowing family and friends to easily get together. The navigation area is spacious with a good overview of all instruments.

The Hallberg-Rassy 43 MkII is a well maintained yacht. She is in fine condition both inside and out. During the winter, she has been inside and received yearly servicing. The teak deck is in good condition, as is the hull. The interior is very well maintained, with both beautiful mahogany and textiles.

Key Facts:

- Electric in mast furling.
- 3 x Electric winches.
- Furling system for genoa and cutter sail (Seldén).
- Storm Jib.
- Sleep 5 in 2 cabins.
- Aft cabin with double berth and single berth.
- Saloon with two sofas.
- Volvo D2-75.
- 3 bladed propeller (Gori), fixed prop as spare.
- Navigation system including radar, AIS and autopilot.
- EPIRB.
- Life raft.
- Washing machine.
- Bimini.

Construction:

RCD Status: The yacht conforms with the essential safety requirements of Directive 94/25EC or RCDII (2013/53/EU as appropriate (Recreational Craft Directive) and is categorised A – "Ocean"

Hull, Deck & Superstructure Construction:

- White hull with blue trim lines.
- Integrated rubbing strake.
- Deep bilge.
- Epoxy primer.
- Antifouling – 2023.
- Polish of hull and deck – 2023.
- Solid vacuum glued teak on deck, coach roof, cockpit and swim platform.

Disclaimer

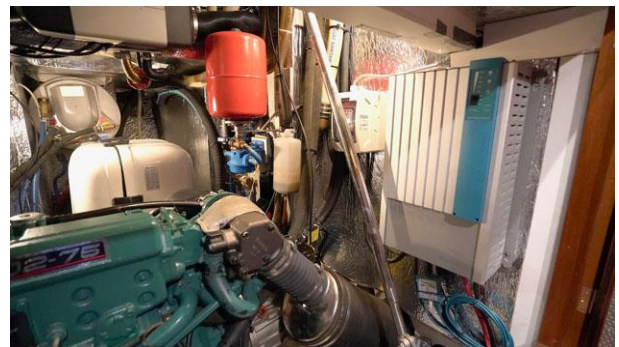
These particulars have been prepared from information provided by the vendors and are intended as a general guide to the yacht, their accuracy cannot be guaranteed by us. The purchaser should confirm details of concern to them by survey or engineer's inspection. The purchaser should also ensure that the purchase contract properly reflects their concerns and specifies details on which they may wish to rely.

Keel & Rudder:

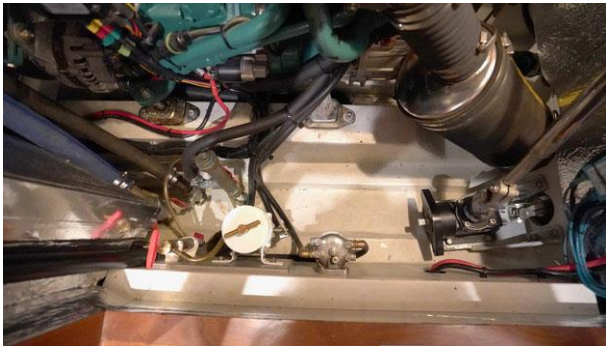
- Lead keel.
- Skeg hang rudder.
- Emergency tiller.

Machinery:**Engine & Propulsion**

- 1 x Volvo D2-75 approx. 780 hrs.
- Pre fuel filter (Racor).
- Propeller, 3 blades (Gori).
- Fixed propeller as spare.
- Rope cutter.
- Bow thruster (Side power SE80/185 T, 8hp).

**Disclaimer**

These particulars have been prepared from information provided by the vendors and are intended as a general guide to the yacht, their accuracy cannot be guaranteed by us. The purchaser should confirm details of concern to them by survey or engineer's inspection. The purchaser should also ensure that the purchase contract properly reflects their concerns and specifies details on which they may wish to rely.



Electrical Systems:

Battery Banks:

- Domestic batteries 12 V / 720 Ah (Euroglobe 6 x 6 V / 240 Ah).
- Start battery – 2022.

Battery Chargers.

- Battery charger Combi Charger / Inverter 12 V / 100A / 2500 W (Mastervolt).
- Battery control panel (Mastervolt).
- Galvanic isolator.

Generator:

- Generator (Whisper 6).

Shore Power:

- Shore power system with earth fault breaker and shore cable.



Disclaimer

These particulars have been prepared from information provided by the vendors and are intended as a general guide to the yacht, their accuracy cannot be guaranteed by us. The purchaser should confirm details of concern to them by survey or engineer's inspection. The purchaser should also ensure that the purchase contract properly reflects their concerns and specifies details on which they may wish to rely.



Plumbing Systems:

Fresh Water & Water Heating System:

- Hot water boiler approx. 40 litres.
- Fresh water pump.

Pumps:

- Manual bilge pump.
- Electrical bilge pump, with level switch, auto/man.
- Electrical bilge pump, high capacity.
- 2 x Shower waste pump.

Tankage:

Fuel:

- Total fuel capacity of approx. 395 litres.

Fresh Water:

- Total fresh water capacity of approx. 650 litres.

Grey/Blackwater Holding Tanks:

- Blackwater capacity of approx. 80 litres in 2 x 40 litre tanks, sea and deck evacuation.

Navigation & Communication Equipment:

- 1 x Compass (Silva 125 F).
- Wind instrument (Furuno FI-50).
- 3 x Multi instrument (Furuno FI-50).
- Digital instrument (Furuno FI-50).
- Speed and depth sensor (Furuno).
- Multi display (Furuno RD-30)
- Autopilot (Raymarine ST7002n Smart Pilot).
- Integrated Heading Sensor (Furuno PG-500).
- Remote control for Autopilot, battery service need.
- Plotter (Furuno MFD12, 3D Multi-Function Display).
- Radar (Furuno Radar Sensor DRS-series 2,2W).
- AIS (Furuno FA-50 Class B).

Communication, Computer & Weather Systems:

- VHF at nav table (Icom IC-M603 Marine Transceiver, SRC).

Disclaimer

These particulars have been prepared from information provided by the vendors and are intended as a general guide to the yacht, their accuracy cannot be guaranteed by us. The purchaser should confirm details of concern to them by survey or engineer's inspection. The purchaser should also ensure that the purchase contract properly reflects their concerns and specifies details on which they may wish to rely.

- VHF handset at steering pedestal (Icom HM-162E).
- VHF handheld (Icom IC-M33 Marine Transceiver, waterproof, SRC).
- VHF speaker (Icom).
- MF/HF Transceiver (IC-M801E).
- Navtex (McMurdo NAV6 Receiver).
- Antenna (RR) for VHF, TV and FM.
- EPIRB (McMurdo) - service need.

Domestic Equipment:*Galley:*

- Gas stove with grill (Plastimo Neptune 2500).
- Gas remote switch (Truma).
- Fridge box with baskets.
- Freezer box (located just aft of the navigation seat).
- Washing machine (Candy Aqua 1000T)

Heating & Ventilation:

- Webasto diesel heater (AirTop EVO 3900).

Entertainment:

- Stereo (Pioneer DEH-7000UB)
- 2 x Speakers in Saloon.

Lighting:

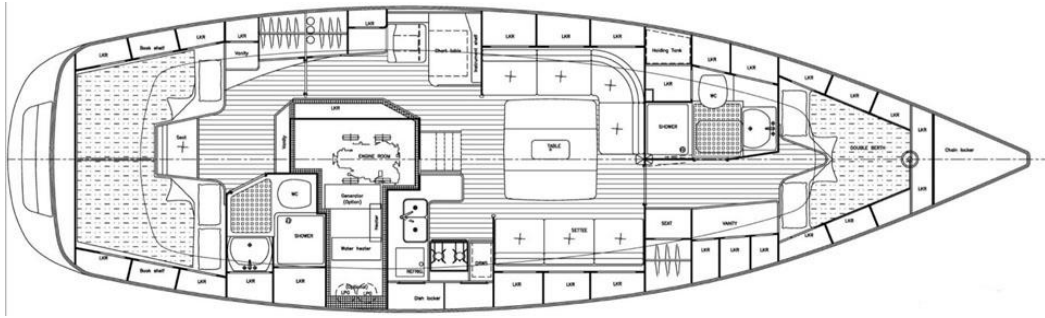
- LED lights in the saloon.
- Red night light in galley and both heads.

Accommodation:*Summary of Accommodation:*

- 5 berths in 2 cabins.
- 2 heads with shower.
- Handmade interior of mahogany.
- Inspection hatches in floorboards.
- Headlining of cream white covered panels, mahogany trim.
- Ships clock.
- Ships barometer.
- 4 x Additional electrical sockets.
- Sky screens in saloon and cabins (Ocean Air).
- Upholstery (dark blue).
- 220 V Outlets in all cabins.

Disclaimer

These particulars have been prepared from information provided by the vendors and are intended as a general guide to the yacht, their accuracy cannot be guaranteed by us. The purchaser should confirm details of concern to them by survey or engineer's inspection. The purchaser should also ensure that the purchase contract properly reflects their concerns and specifies details on which they may wish to rely.

Internal Layout:*Description of layout from forwards:**Forward Cabin:*

- Forward guest cabin with v-berth.
- Topping mattresses – 2021.
- En suite heads with separate shower area.
- Plenty of storage in wardrobes, lockers and shelves.

**Disclaimer**

These particulars have been prepared from information provided by the vendors and are intended as a general guide to the yacht, their accuracy cannot be guaranteed by us. The purchaser should confirm details of concern to them by survey or engineer's inspection. The purchaser should also ensure that the purchase contract properly reflects their concerns and specifies details on which they may wish to rely.

Forward Head:

- Heads with separate shower area.
- Electric toilet (Sanimarine 31N) - 2021
- Basin in corian
- Plenty of storage in wardrobes, lockers and shelves.

**Saloon:**

- Spacious saloon with 2 x sofas.
- Fabric - Blue de luxe Ton 51.
- Solid table with foldable sides.
- Plenty of storage in the seating area, lockers and shelves.

**Disclaimer**

These particulars have been prepared from information provided by the vendors and are intended as a general guide to the yacht, their accuracy cannot be guaranteed by us. The purchaser should confirm details of concern to them by survey or engineer's inspection. The purchaser should also ensure that the purchase contract properly reflects their concerns and specifies details on which they may wish to rely.



Navigation Area:

- The navigation area is located directly to port of the entrance and includes a comfortable seat, a chart table, drawers for storage and space for instruments and electrical panel.



Disclaimer

These particulars have been prepared from information provided by the vendors and are intended as a general guide to the yacht, their accuracy cannot be guaranteed by us. The purchaser should confirm details of concern to them by survey or engineer's inspection. The purchaser should also ensure that the purchase contract properly reflects their concerns and specifies details on which they may wish to rely.

**Galley:**

- The U-shaped galley is located directly to starboard of the entrance.
- Single lever freshwater mixer.
- Plenty of storage in the lockers and drawers.
- Corian worktop.

**Disclaimer**

These particulars have been prepared from information provided by the vendors and are intended as a general guide to the yacht, their accuracy cannot be guaranteed by us. The purchaser should confirm details of concern to them by survey or engineer's inspection. The purchaser should also ensure that the purchase contract properly reflects their concerns and specifies details on which they may wish to rely.

Aft Head:

- Heads with separate shower area.
- Electric toilet (Sanimarine 31N) – 2016.
- Basin in corian.
- Plenty of storage in wardrobes, lockers and shelves.

**Aft Cabin:**

- Owner's aft cabin with a double berth and a single berth.
- Topping mattresses – 2021.
- En suite heads with separate shower area.
- Plenty of storage in wardrobes, lockers and shelves.

**Disclaimer**

These particulars have been prepared from information provided by the vendors and are intended as a general guide to the yacht, their accuracy cannot be guaranteed by us. The purchaser should confirm details of concern to them by survey or engineer's inspection. The purchaser should also ensure that the purchase contract properly reflects their concerns and specifies details on which they may wish to rely.



Cockpit:

- Natural teak entrance and chart table with integrated teak grab rails.
- Varnished cockpit table.
- Steering wheel, stainless steel, covered with elk skin – 2021.
- Spare steering wheel (smaller diameter).
- Grab rail at the pedestal and outside the windscreen.
- Cockpit locker.
- Sprayhood.
- Sprayhood extension - 2010, serviced 2021.
- Bimini – 2015.
- Steering wheel cover – 2021.



Disclaimer

These particulars have been prepared from information provided by the vendors and are intended as a general guide to the yacht, their accuracy cannot be guaranteed by us. The purchaser should confirm details of concern to them by survey or engineer's inspection. The purchaser should also ensure that the purchase contract properly reflects their concerns and specifies details on which they may wish to rely.

Deck Equipment:*Rig:*

- Electric in-mast furling (Seldén).
- Furling system for genoa (Seldén).
- Furling system for inner fore sail (Seldén).
- Carbon spinnaker boom (Seldén).
- Rodkick (Seldén).
- Deck light.
- Steaming light.
- Tri-colour and anchor light, LED (Lopolight) – 2021.
- Spinnaker halyard.
- Insulated backstay with cable to navigation table.
- Passive radar reflector (Echo Max).

Winches:

- 2 x Electrical Genoa winch (Lewmar 54).
- Electrical Main sheet / furling winch (Lewmar 40).
- Manual Main sheet winch (Lewmar 40).
- 2 x Manual halyard winch at mast (Lewmar 40).

Sails:

- Furling Mainsail.
- Furling Genoa (Triradial, DC 77, E-foam, 57 sqm).
- Furling Cutter sail (lightly used).
- Storm Jib.

Deck Gear:

- Deck gear (Lewmar).
- Line clutches (Lewmar and Spinlock).

Anchoring & Mooring Equipment:

- Electrical windlass (Lewmar) - serviced 2022.
- Bruce anchor.
- Double anchor roller in the bow.
- Anchor wash pump in the bow - 2016.
- Stern anchor with webbing anchor line (Ankarolina)
- 4 x Cleats.
- 2 x Spring cleats.
- 4 x Mooring lines.
- 4 x Fenders.
- Bow ladder.
- Side ladder.
- Boat hook.

Skylights, Portlights, Windows, Ventilation:

- Fixed cockpit windscreen, opening mid window.
- 4 x skylights.
- 10 x portlights.
- 5 x dorade type ventilator.

Disclaimer

These particulars have been prepared from information provided by the vendors and are intended as a general guide to the yacht, their accuracy cannot be guaranteed by us. The purchaser should confirm details of concern to them by survey or engineer's inspection. The purchaser should also ensure that the purchase contract properly reflects their concerns and specifies details on which they may wish to rely.

Various Deck Equipment

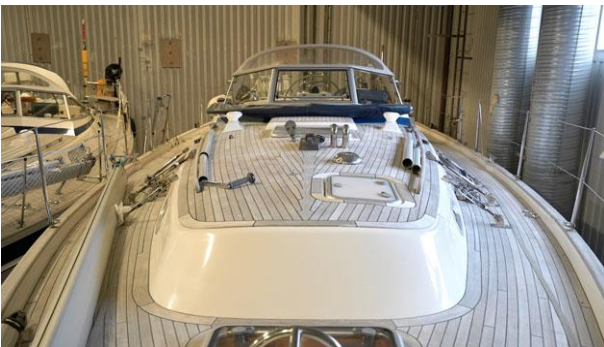
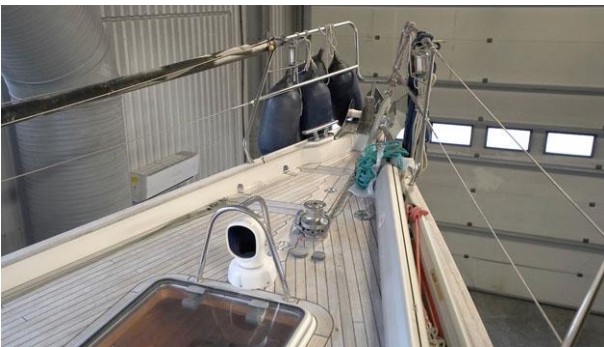
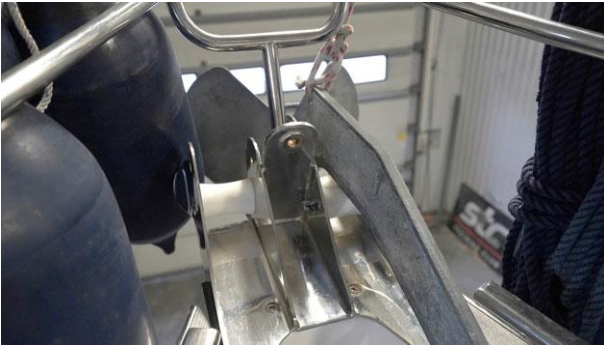
- Safety/swim ladder.
- Shower at the swim platform.
- Crane for outboard.
- Pushpit teak fitting for outboard engine.
- Midship opening rail on both sides.
- Navigation lights LED – 2021.

Safety Equipment:

- Liferaft 4p (Ocean Safety) - need service.
- Jon Bouy - need service.
- Epirp (McMurdo) - need service.
- Life lines on deck.

Fire-Fighting Equipment:

- 3 x Fire extinguisher.

**Disclaimer**

These particulars have been prepared from information provided by the vendors and are intended as a general guide to the yacht, their accuracy cannot be guaranteed by us. The purchaser should confirm details of concern to them by survey or engineer's inspection. The purchaser should also ensure that the purchase contract properly reflects their concerns and specifies details on which they may wish to rely.



Disclaimer

These particulars have been prepared from information provided by the vendors and are intended as a general guide to the yacht, their accuracy cannot be guaranteed by us. The purchaser should confirm details of concern to them by survey or engineer's inspection. The purchaser should also ensure that the purchase contract properly reflects their concerns and specifies details on which they may wish to rely.

BERTHON

synonymous with yachting since 1877