



GRISLA 2

LOA:	61'11" / 18.88m
Year:	2009
LWL:	50'2" / 15.30m
Beam:	16'11" / 5.15m
Draft:	8'2" / 2.50m
Displacement:	33,000kg / 72,753lb
Ballast:	11,000kg / 24,251lb
Hull Material:	GRP
Engines:	1 x Perkins M225Ti, 225 hp
Designer:	German Frers
Accommodation:	8 berths in 4 cabins
Builder:	Hallberg Rassy AB
Location:	Strömstad, Sweden
Price:	SEK 11,500,000 EU VAT paid



BERTHON

INTERNATIONAL YACHT BROKERS

Ängsvägen 16, 473 33 Henån

T: +46 304 694 000

E: brokers@berthonscandinavia.se

W: www.berthonscandinavia.com

Disclaimer

These particulars have been prepared from information provided by the vendors and are intended as a general guide to the yacht, their accuracy cannot be guaranteed by us. The purchaser should confirm details of concern to them by survey or engineer's inspection. The purchaser should also ensure that the purchase contract properly reflects their concerns and specifies details on which they may wish to rely.

Broker's Comments:

The Hallberg-Rassy 62 is designed and built for sailing anywhere in the world. It is a great yacht for those who appreciate superb comfort and sailing performance at sea.

This Hallberg-Rassy 62, GRISSLA 2 was delivered from the yard in 2009. She is lightly used and very well taken care of. GRISSLA 2 has sailed approx. 5,300 Nm, mainly in Scandinavian waters, during the summer season. She has been kept inside during the winter season and has been fully serviced and updated. GRISSLA 2 is in immaculate condition.

Directly at the entrance you will find the navigation area to starboard and the longitude galley to port. Walking aft you will pass the walk-in engine room and further aft is the owner's aft cabin with en-suite heads/shower. In front of the saloon, which is equipped with two sofas to PT and two very comfortable chairs to starboard, is three guest cabins, a heads with shower and a washing cabin. The amount of storage on-board is amazing and obviously very useful for long term sailing in remote areas where you need to bring a lot of personal items, food, drinks, equipment and tools.

GRISSLA 2 is in immaculate condition, well equipped, updated and ready for any type of new adventures!

Key Facts:

- Interior:
 1. Sleep 8 persons in 4 cabins.
 2. Alcantara upholstery – 2019.
 3. Carpet – 2019.
- Rig:
 1. In-mast furling, hydraulic.
 2. Outhaul, hydraulic.
 3. Furlex for genoa and jib, hydraulic.
 4. All winches, electric.
 5. Mainsail, Genoa & Jib (Elvström).
 6. Furling Gennaker.
 7. Whisker pole.
- Deck Equipment:
 1. Hardtop.
 2. Teak deck, glued.
 3. Windlass (2000 W) with capstan.
 4. Davits, electric.
 5. Antenna pole at aft deck.
 6. Life raft, 6 pers – 2020.
 7. Tender with 20 hp outboard – 2019.
- Technical Systems:
 1. Perkins M225Ti, 225 hp.
 2. Proportional bow and stern thrusters.
 3. Diesel generator 8 kW/1500 rpm.
 4. Complete navigation system (3 separate systems).
 5. Computer with Max Sea Time Zero.
 6. Radar antenna with WiFi – 2019.
 7. 2 x Autopilot (Raymarine).
 8. 4G and WiFi antennas – 2019.
 9. Modem/Router/WiFi amplifier – 2019.
 10. Iridium Pilot – 2019.
 11. Solar panels 150W/24V – 2021.
 12. Watermaker.

Disclaimer

These particulars have been prepared from information provided by the vendors and are intended as a general guide to the yacht, their accuracy cannot be guaranteed by us. The purchaser should confirm details of concern to them by survey or engineer's inspection. The purchaser should also ensure that the purchase contract properly reflects their concerns and specifies details on which they may wish to rely.

13. Air conditioning.

Construction:

RCD Status: The yacht conforms with the essential safety requirements of Directive 94/25EC or RCDII (2013/53/EU as appropriate (Recreational Craft Directive) and is categorised A – “Ocean”

Hull, Deck & Superstructure Construction:

- Hull and deck are built in GRP with ISO-polyester in a sandwich construction with a hand layup method and with divynycell as sandwich material.
- The keel area is built in a massive laminate with reinforcements laminated to the hull.
- The entire deck is completely joined together with the hull by overlapping GRP laminate.
- The laminate is covered with ISO-gelcoat.
- The colour of the hull is white, with a blue decorative stripe.
- On both hull sides are an integrated rubbing strake with stainless steel strip, to protect the hull sides when mooring.
- There is an integrated swimming platform at the transom.
- Deck, coach roof, cockpit, cockpit coaming and the toe rail, are covered with teak.
- Double deck drainages on both sides, which drain water below the water surface to avoid dirt streaks on the hull sides.
- Solid teak on deck, coach roof, hard top roof, swim platform and in cockpit area.
- Toe rail in teak with stainless steel protection strips.

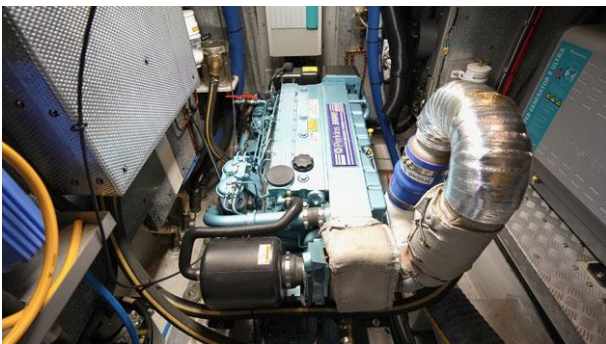
Keel & Rudder:

- The lead keel is bolted on with 14 acid resistant stainless steel 36 mm bolts forming the ballast of 11 tons.
- The rudder is built in GRP with 100mm stainless steel rudder shaft.
- Heavy cast bronze rudder fittings and high-class roller bearings.

Machinery:

Engine & Gearboxes:

- Diesel engine (Perkins M225Ti, 225 hp), 850 hrs.
- Fuel pre-filters (Racor) with water sensors.
- Electric oil change pump.



Disclaimer

These particulars have been prepared from information provided by the vendors and are intended as a general guide to the yacht, their accuracy cannot be guaranteed by us. The purchaser should confirm details of concern to them by survey or engineer's inspection. The purchaser should also ensure that the purchase contract properly reflects their concerns and specifies details on which they may wish to rely.



Propulsion & Steering:

- Sidepower PRO proportional docking system with bow and stern thrusters (SE240 / SEP210/250).
- 3-blade folding propeller (Gori).
- Spare 3-blade fixed propeller.
- Shaft drive.
- Aqua Drive.
- Steering wheel, stainless steel covered with skin.

Electrical Systems:

Voltage Systems:

- 220 V outlets in all cabins.

Battery Banks:

- Service batteries 24 V / 630 Ah (Tubular Plate).
- Instrument batteries 12 V / 210 Ah
- Engine start battery 12 V / 140 Ah.
- 12 V battery control panel (Mastervolt).
- 24 V battery and inverter control panel (Mastervolt MICC).

Battery Chargers:

- Combi charger / inverter 24 V / 4000 W / 120 A / 230 V.
- Battery charger 24 V / 70A / 230 V (Mastervolt MASS).
- Charger control panel (Mastervolt BTM3).

Alternators:

- Alternator (Mastervolt 24 V / 150 A).
- Alternator (12 V / 70 A).

Generator:

- Generator 230 V / 50 Hz / 1500 rpm (Whisper 8 Ultra), 180 hrs.
- Generator control panel.
- Exhaust separator for generator.

Disclaimer

These particulars have been prepared from information provided by the vendors and are intended as a general guide to the yacht, their accuracy cannot be guaranteed by us. The purchaser should confirm details of concern to them by survey or engineer's inspection. The purchaser should also ensure that the purchase contract properly reflects their concerns and specifies details on which they may wish to rely.

Shore Power:

- 220 V / 32 A shore power system, ground fault circuit breaker, fuse box and shore cable.

Other Electrical:

- 2 x Isolation transformer (Mastervolt MASS GI 3,5kW HF).
- Solar panels 150 W / 24 V mounted on the hardtop roof - 2021.

Plumbing Systems:

- Deck wash pump (Flojet).

Fresh Water & Water Heating System:

- Water heater approx. 75 L.
- Freshwater pump (Dual max).

Watermaker:

- Watermaker (MT 550) with automatic flush, 230 V.

Bilge Pumps:

- 2 x High-capacity bilge pumps.
- Auto bilge pump.
- Manual bilge pump.

Tankage:**Fuel:**

- Fuel approx. 1600 L (351.95 gallons) (3 x stainless steel tanks).
- Fuel transfer pump.

Fresh water:

- Water approx. 2000 L (439.94 gallons) (3 x stainless steel tanks).

Grey/Blackwater holding tanks:

- Holding approx. 120 L (26.40 gallons) (2 x stainless steel tanks).

Navigation Equipment:

- Iridium Pilot – 2019.

At Steering Pedestal:

- Compass, with light.
- Plotter (Furuno MFD8 3D).
- Autopilot control panel (Furuno nav pilot 500) with Whitlock drive.
- Autopilot control panel (Furuno nav pilot 500) with two linear drives drive.
- Instrument (Furuno FI-50 digital).
- VHF / DSC (Furuno).
- USB charging outlet at the steering pedestal – 2019.

Behind the Windscreen:

- 2 x Multi-, Digital-, Wind-, CH Wind instruments (Furuno FI-50).
- Screen connected to navigation computer.

Disclaimer

These particulars have been prepared from information provided by the vendors and are intended as a general guide to the yacht, their accuracy cannot be guaranteed by us. The purchaser should confirm details of concern to them by survey or engineer's inspection. The purchaser should also ensure that the purchase contract properly reflects their concerns and specifies details on which they may wish to rely.

- Control unit for navigation computer – 2019.
- Joystick for autopilot – 2019.
- iPad with Maxsea navigation software, connected to radar via WiFi.

At Navigation Table:

- 15" screen.
- Navigation computer (fixed installation) with MaxSea Time Zero software – 2019.
- Charts for Scandinavia.
- Laptop computer (Tough Book).
- Satellite compass instrument (Furuno).
- Digital instrument (Furuno FI-50 Digital).
- VHF (Furuno FM2721, DSC class D).
- Weather fax / Navtex module (Furuno Fax 30).
- Weather fax filter for RR antenna.
- Digital sounder (Furuno DFF1).
- AIS transponder (Furuno FA-50 class B).
- WiFi router (Locomarine) – 2019.
- VHF handheld with charge station – 2019.

At Aft Deck Pole:

- Radar antenna (Furuno DRS4A 4kW 3D), new drive unit – 2019.
- Satellite compass antenna (Furuno SC-50).
- GPS antenna for AIS.
- GPS antenna for navigation.
- Flood light.

In Aft Cabin:

- Instrument (Furuno FI-50 digital).

On the Mast:

- Radar antenna (Furuno with WiFi) – 2019.
- Protection bar for radar antenna, stainless steel.
- Iridium antenna.
- 4G antenna – 2019.
- WiFi antenna – 2019.
- Wind sensor.
- Combi antenna (RR Pacific).
- Horn (Aqua Signal).

Domestic Equipment:

- Domestic size washer/dryer.

Galley:

- Double sink with hot and cold water.
- Fridge/Freezer box.
- Fridge with door.
- Freezer box.
- Gas stove with 3 burners and oven (Force 10).
- Ceramic 220 V cooking hob.

Disclaimer

These particulars have been prepared from information provided by the vendors and are intended as a general guide to the yacht, their accuracy cannot be guaranteed by us. The purchaser should confirm details of concern to them by survey or engineer's inspection. The purchaser should also ensure that the purchase contract properly reflects their concerns and specifies details on which they may wish to rely.

- Microwave oven.
- Galley fan.

Heads/Showers:

- 2 x Shower waste pumps.
- Electric toilet (sea or freshwater flush) - forward PT guest en-suite.
- Electric toilet (sea or freshwater flush) – aft cabin.
- Shower at swim platform.

Heating & Ventilation:

- Air conditioning (Climma) in aft cabin and port forward cabin.

Entertainment:

- TV 23", retractable in the saloon.
- TV 15" in forward port cabin.
- 2 x Stereo / DVD, in saloon and aft cabin (Pioneer).
- Sound system, 5 speakers and amplifier, in saloon (Pioneer).
- 2 x Speakers in cockpit (Sea and Symphony).

Lighting:

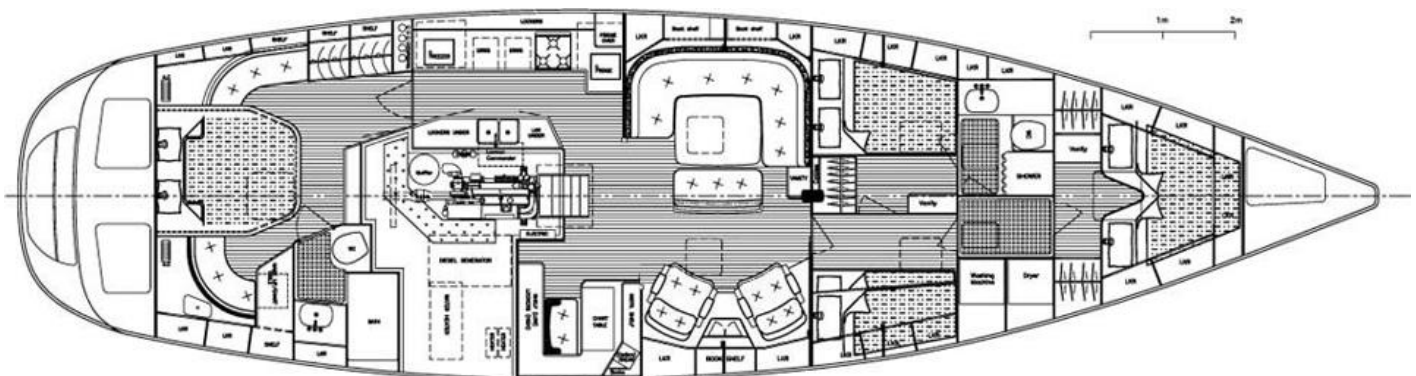
- Red night light at galley and navigation table.

Accommodation:

Summary of Accommodation:

- Handmade interior of selected teak, varnished to a satin finish.
- Spring mattresses in all cabins.
- Alcantara upholstery - 2019.
- Carpet (light beige colour) - 2019
- Curtains (white colour).
- 4 x Sky screens (Ocean air).
- Barometer, clock, thermometer and hygrometer (Wempe).
- Safe box (Minisafe SV160).
- Foldable lee board in aft cabin SB.
- 2 x Lee cloth in SB FW cabin.

Internal Layout:



Disclaimer

These particulars have been prepared from information provided by the vendors and are intended as a general guide to the yacht, their accuracy cannot be guaranteed by us. The purchaser should confirm details of concern to them by survey or engineer's inspection. The purchaser should also ensure that the purchase contract properly reflects their concerns and specifies details on which they may wish to rely.

Description of layout from forwards:

Forward Cabin:

- V- berths, several lockers and two wardrobes.
- Large deck hatch for light, ventilation and emergency access.
- Deck ventilator.



Forward SB Washing Cabin:

- To SB side just before the forward guest cabin is a light and spacious laundry cabin with plenty of storage lockers.
- Teak grating floorboard.



Disclaimer

These particulars have been prepared from information provided by the vendors and are intended as a general guide to the yacht, their accuracy cannot be guaranteed by us. The purchaser should confirm details of concern to them by survey or engineer's inspection. The purchaser should also ensure that the purchase contract properly reflects their concerns and specifies details on which they may wish to rely.

Forward PT Guest Cabin with En-suite Heads/Shower:

- Equipped with a comfortable double berth and lockers for storage.
- En-suite heads with separate shower corner.

**Disclaimer**

These particulars have been prepared from information provided by the vendors and are intended as a general guide to the yacht, their accuracy cannot be guaranteed by us. The purchaser should confirm details of concern to them by survey or engineer's inspection. The purchaser should also ensure that the purchase contract properly reflects their concerns and specifies details on which they may wish to rely.



Guest Cabin to SB:

- When entering the forward part of the yacht from the saloon you will come to the forward port guest cabin.
- Equipped with two single beds, cupboards for storage.



Disclaimer

These particulars have been prepared from information provided by the vendors and are intended as a general guide to the yacht, their accuracy cannot be guaranteed by us. The purchaser should confirm details of concern to them by survey or engineer's inspection. The purchaser should also ensure that the purchase contract properly reflects their concerns and specifies details on which they may wish to rely.

Saloon:

- A U-shaped sofa to port with saloon table in the middle and a sofa for two persons at the opposite side of the table.
- To starboard in the saloon, you will find two comfortable armchairs with a table / cupboard in between.

**Disclaimer**

These particulars have been prepared from information provided by the vendors and are intended as a general guide to the yacht, their accuracy cannot be guaranteed by us. The purchaser should confirm details of concern to them by survey or engineer's inspection. The purchaser should also ensure that the purchase contract properly reflects their concerns and specifies details on which they may wish to rely.



Disclaimer

These particulars have been prepared from information provided by the vendors and are intended as a general guide to the yacht, their accuracy cannot be guaranteed by us. The purchaser should confirm details of concern to them by survey or engineer's inspection. The purchaser should also ensure that the purchase contract properly reflects their concerns and specifies details on which they may wish to rely.

Navigation Area:

- To PT at the entrance is the yachts navigation area with a spacious chart table and a comfortable seat.
- Lots of space for instruments and navigation equipment.

**Galley:**

- Located to SB side at the entrance.
- Working surface in white coloured Corian material with a strong, all round teak fiddle rail, which is milled so it can be used as a handhold as well.
- Crockery locker and cutlery drawers and cupboards.
- Huge amount of storage space
- Opening portlight to cockpit.

**Disclaimer**

These particulars have been prepared from information provided by the vendors and are intended as a general guide to the yacht, their accuracy cannot be guaranteed by us. The purchaser should confirm details of concern to them by survey or engineer's inspection. The purchaser should also ensure that the purchase contract properly reflects their concerns and specifies details on which they may wish to rely.



Aft Cabin (Owners' Cabin):

- One big double centre bed.
- Seat on each side with table to starboard.
- Several lockers and a mirror.
- An opening skylight can be used as an emergency exit or for ventilation purpose.
- A heads/shower is located directly to starboard in the owner's cabin.
- Electric towel dryer.

Disclaimer

These particulars have been prepared from information provided by the vendors and are intended as a general guide to the yacht, their accuracy cannot be guaranteed by us. The purchaser should confirm details of concern to them by survey or engineer's inspection. The purchaser should also ensure that the purchase contract properly reflects their concerns and specifies details on which they may wish to rely.

**Disclaimer**

These particulars have been prepared from information provided by the vendors and are intended as a general guide to the yacht, their accuracy cannot be guaranteed by us. The purchaser should confirm details of concern to them by survey or engineer's inspection. The purchaser should also ensure that the purchase contract properly reflects their concerns and specifies details on which they may wish to rely.



Cockpit:

- Hardtop with opening mid window, ceiling lights with dimmers and handrails.
- High gloss varnished chart table, hard top details, cockpit table and wash boards.
- Fitting for lifeline, folding.

Deck Equipment:

Rig:

- Deck stepped aluminium mast, three spreaders and one jumper spreader (Seldén).
- Rod rigging.
- Hydraulic in-mast furling (Seldén).
- Hydraulic outhaul (Seldén).
- Hydraulic furler for genoa (Seldén).
- Hydraulic furler for jib (Seldén).
- Hydraulic boom vang, manoeuvred from cockpit (Holmatro).

Disclaimer

These particulars have been prepared from information provided by the vendors and are intended as a general guide to the yacht, their accuracy cannot be guaranteed by us. The purchaser should confirm details of concern to them by survey or engineer's inspection. The purchaser should also ensure that the purchase contract properly reflects their concerns and specifies details on which they may wish to rely.

- Hydraulic aft stay tensioner, manoeuvred from cockpit (Holmatro).
- Whisker pole (stored in front of the mast) with topping lifts, leather protection cover.
- Boom preventer system.
- Boom / Cockpit light.
- 3-colour and anchor light, LED - 2022.
- 2 x Deck lights.
- Windex.
- Flag halyards.

Winches, Blocks, Tracks:

- 2 x Hydraulic genoa winches (Lewmar 77, stainless steel).
- 2 x Hydraulic additional sheet winches (Lewmar 58, stainless steel).
- 1 x Hydraulic main sheet winch (Lewmar 50, stainless steel).
- 2 x Mast winches (Lewmar 16).

Sails:

- Mainsail (Elvström VC Vectran).
- Genoa (Elvström VC Vectran).
- Jib (Elvström VC Vectran).
- Furling Gennaker (Elvström).
- UV protection replaced on all sails - 2020.

General:

- Pushpit teak fitting for outboard motor.
- Pushpit seats in teak.
- Light in aft storage lockers.
- Radar pole with removable crane.
- Swim/safety ladder, divided (to suit a passarelle).

Anchoring & Mooring Equipment:

- Electric windlasses with capstan (Lofrance).
- Delta 40 kg.
- Stainless steel anchor chain approx. 100 m.
- Spare anchor.
- 4 x Mooring cleats (stainless steel).
- 2 x Spring cleats (stainless steel).
- Stainless steel protection strips at all cleats.
- 6 x Mooring lines.
- 6 x Fenders.

Covers, Canvas & Cushions:

- Sprayhood extension.
- Bimini.

Tender & Outboard:

- Davits, electrically powered (Simpson 225 kg) - 2016
- Tender (Highfield 360) - 2019.
- Outboard (Honda 20 hp) - 2019.

Disclaimer

These particulars have been prepared from information provided by the vendors and are intended as a general guide to the yacht, their accuracy cannot be guaranteed by us. The purchaser should confirm details of concern to them by survey or engineer's inspection. The purchaser should also ensure that the purchase contract properly reflects their concerns and specifies details on which they may wish to rely.

Safety Equipment:

- High water alarm.
- Lifeline gates.
- Liferaft (Plastimo Transocean) - 2020.
- Rescue sling.

Fire-fighting equipment:

- Fire alarm in engine room.
- CO2 fire extinguisher in engine room.

**Disclaimer**

These particulars have been prepared from information provided by the vendors and are intended as a general guide to the yacht, their accuracy cannot be guaranteed by us. The purchaser should confirm details of concern to them by survey or engineer's inspection. The purchaser should also ensure that the purchase contract properly reflects their concerns and specifies details on which they may wish to rely.

**Disclaimer**

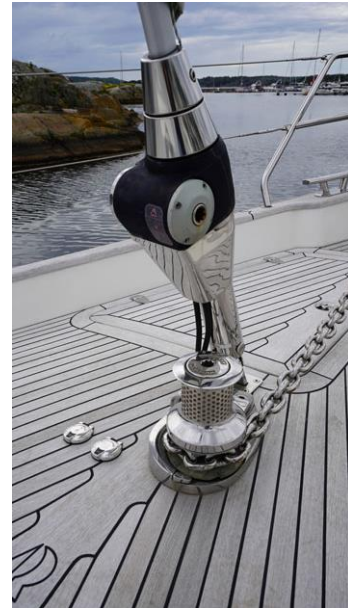
These particulars have been prepared from information provided by the vendors and are intended as a general guide to the yacht, their accuracy cannot be guaranteed by us. The purchaser should confirm details of concern to them by survey or engineer's inspection. The purchaser should also ensure that the purchase contract properly reflects their concerns and specifies details on which they may wish to rely.

**Disclaimer**

These particulars have been prepared from information provided by the vendors and are intended as a general guide to the yacht, their accuracy cannot be guaranteed by us. The purchaser should confirm details of concern to them by survey or engineer's inspection. The purchaser should also ensure that the purchase contract properly reflects their concerns and specifies details on which they may wish to rely.

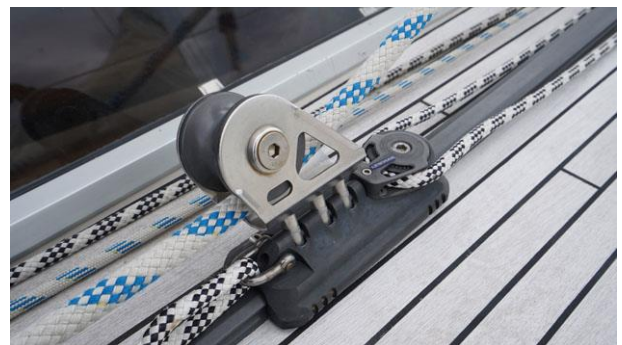
**Disclaimer**

These particulars have been prepared from information provided by the vendors and are intended as a general guide to the yacht, their accuracy cannot be guaranteed by us. The purchaser should confirm details of concern to them by survey or engineer's inspection. The purchaser should also ensure that the purchase contract properly reflects their concerns and specifies details on which they may wish to rely.



Disclaimer

These particulars have been prepared from information provided by the vendors and are intended as a general guide to the yacht, their accuracy cannot be guaranteed by us. The purchaser should confirm details of concern to them by survey or engineer's inspection. The purchaser should also ensure that the purchase contract properly reflects their concerns and specifies details on which they may wish to rely.

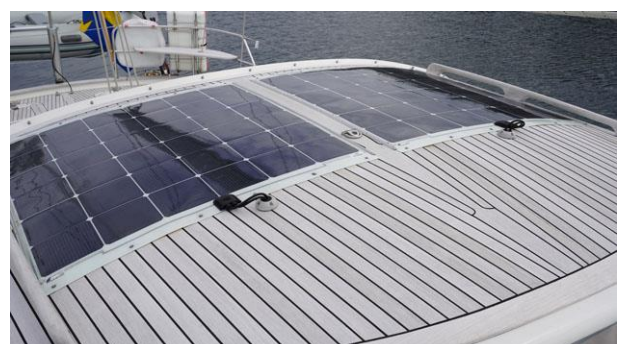
**Disclaimer**

These particulars have been prepared from information provided by the vendors and are intended as a general guide to the yacht, their accuracy cannot be guaranteed by us. The purchaser should confirm details of concern to them by survey or engineer's inspection. The purchaser should also ensure that the purchase contract properly reflects their concerns and specifies details on which they may wish to rely.



Disclaimer

These particulars have been prepared from information provided by the vendors and are intended as a general guide to the yacht, their accuracy cannot be guaranteed by us. The purchaser should confirm details of concern to them by survey or engineer's inspection. The purchaser should also ensure that the purchase contract properly reflects their concerns and specifies details on which they may wish to rely.



Disclaimer

These particulars have been prepared from information provided by the vendors and are intended as a general guide to the yacht, their accuracy cannot be guaranteed by us. The purchaser should confirm details of concern to them by survey or engineer's inspection. The purchaser should also ensure that the purchase contract properly reflects their concerns and specifies details on which they may wish to rely.

**Disclaimer**

These particulars have been prepared from information provided by the vendors and are intended as a general guide to the yacht, their accuracy cannot be guaranteed by us. The purchaser should confirm details of concern to them by survey or engineer's inspection. The purchaser should also ensure that the purchase contract properly reflects their concerns and specifies details on which they may wish to rely.