



MOON

LOA:	46'9" / 14.25m
Year:	2001
LWL:	41'4" / 12.6m
Beam:	13' / 3.96m
Draft:	4'11" / 1.5m – 10'2" / 3.1m
Displacement:	17,000kg / 37,479lb
Hull Material:	Wood core, cedar / epoxy
Engines:	1 x Perkins Sabre M65
Designer:	Dick Koopmans
Accommodation:	4 berths in 2 cabins
Builder:	Klaas Bood Yachtbouw
Location:	Bovallstrand, Sweden
Price:	€225,000 VAT paid in EU

BERTHON

INTERNATIONAL YACHT BROKERS

Ängsvägen 16, 473 33 Henån

T: +46 304 694 000

E: brokers@berthonscandinavia.se

W: www.berthonscandinavia.com

Disclaimer

These particulars have been prepared from information provided by the vendors and are intended as a general guide to the yacht, their accuracy cannot be guaranteed by us. The purchaser should confirm details of concern to them by survey or engineer's inspection. The purchaser should also ensure that the purchase contract properly reflects their concerns and specifies details on which they may wish to rely.

Broker's Comments:

This Koopmans 47, MOON was designed by Dick Koopmans and built by Klaas Bood Yachtbouw in Holland. She was delivered to her first owner in 2001. Current (second) owners took over the ownership in 2012. MOON has given her owners wonderful years of cruising and liveaboard in both warm and cold climates.

MOON is a solid, full keel wooden core construction of cedar and epoxy with a centre board. With the centre board in upper position the draft is only 1.5 m which allows you to sail and anchor in shallow waters.

The pilot house and the hard top offer excellent protection in any weather conditions. Cork is laid (glued) on the deck, which provides not only good insulation but also great grip when working on deck, no matter if wet or dry.

MOON comes with a white painted masthead rig (Holland Spares) with two straight spreaders. The conventional mainsail has 5 battens and 2 reefs and is hoisted from the cockpit by means of an electric winch. The two head sails, a yankee and a cutter sail are both furled from the cockpit.

The layout is set up for 2-4 people. At the entrance you will find the navigation table, a head, a seating area with a table and an aft cabin with double berth. Thanks to the pilot house you have a good view from the navigation table and the seating area.

Walking forward you will find a large galley with electric stove and oven, an 'office area' with a table, seat and storage space and the welcoming saloon with sofa and two comfortable armchairs. In front of the mast bulkhead is the second head with shower and a cabin with a double berth. There is very good storage space throughout the yacht.

MOON is equipped for long distance sailing and comes with a watermaker, a SSB radio with modem for GRIB down loads, autopilot and wind vane steering, navigation computer, updated electric and electronic equipment, heating systems that makes it comfortable to stay onboard also when there is ice in the water.

If you are searching for a properly built, continuously updated and serviced ocean going yacht in good condition, ready for new adventures, in any part of the world - MOON might be the right yacht for you!

Key Facts:

- Cedar wood core / epoxy construction.
- Internal sealed lead ballast.
- Full keel with centre board 1.5 / 3,1 m draft.
- Pilot house.
- Hard top.
- Mast head rig with twin furling head sails, cutter rigged.
- Electric winch for sails handling.
- Cork laid (glued) on the deck – 2014.
- Sleep 2 + 2 persons in two cabins.
- Electric stove and oven in the galley.
- Heating systems for long term liveaboard in cold climates.
- Watermaker.
- Navigation equipment B&G – 2014.
- Auto pilot.
- Wind vane steering.
- SSB radio with modem.

Disclaimer

These particulars have been prepared from information provided by the vendors and are intended as a general guide to the yacht, their accuracy cannot be guaranteed by us. The purchaser should confirm details of concern to them by survey or engineer's inspection. The purchaser should also ensure that the purchase contract properly reflects their concerns and specifies details on which they may wish to rely.

Owner's Comments:

MOON is looking for her third crew.

The first crew took her from Holland to Malaysia via the Mediterranean and Suez. The second crew took her from Malaysia to Sweden via Japan, Alaska, Canada, USA, Mexico and through Panama. She continued north along the east coast of the United States, then to Canada and on to Greenland. The last bit was via the Hebrides / Scotland and home to Sweden.

MOON was built in Holland at the reputable shipyard Klaas Bood according to the specifications of her first crew. The Klaas Bood shipyard built a hull in wood core and with a high finish on the teak interior.

Superbly decorated for two + two with all amenities. Both the first crew and ourselves (now planning our third life ashore), have sailed this yacht exclusively with a two-man crew.

MOON was launched in 2001 and received a proper update in 2014 after lying dormant in Malaysia for several years. Since then, we have sailed her just over 40,000 nautical miles and cannot help but admire how seaworthy and comfortable the yacht is in all weathers.

Classic lines with a really deep-water hull. A full keel with a centre board makes her shallow draft when you want and deep draft when needed. A stable and powerful rig does not make things worse. The sail area is fully sufficient in most conditions and where we have sailed, a reef in the main sail has mostly been the rule.

Everything has worked well and as a home and even in a cold climate, she has been a dream come true.

It will be difficult to sell MOON, who has been our only home for many years. But since we have found a house, in combination with the fact that we are not getting younger, we feel it is time to release her to a new fresh crew with dreams of long-distance sailing, liveaboard or both.

To learn more about MOON please check our website: <https://www.sailaround.info>.

Construction:

RCD Status: The yacht conforms with the essential safety requirements of Directive 94/25EC or RCDII (2013/53/EU as appropriate (Recreational Craft Directive) and is categorised A – "Ocean" (or Cat B – whichever is appropriate)

Hull, Deck & Superstructure Construction:

- White hull and deck details.
- Cork, epoxy glued to the deck, coach roof and cockpit (Marinedeck 2000) – 2014.
- Cedar wood core / epoxy construction, 45 mm thickness.
- Rubbing strake with stainless steel strip.

Keel & Rudder:

- Full keel.
- Centre board, hydraulic, 50 mm stainless shaft, bearings replaced – 2019.
- Epoxy sealed internal lead ballast 7,3 ton.
- Rudder mounted on the back of the keel, 60 mm shaft, bearings in lower part of the skeg, at through hull and cockpit floor.

Disclaimer

These particulars have been prepared from information provided by the vendors and are intended as a general guide to the yacht, their accuracy cannot be guaranteed by us. The purchaser should confirm details of concern to them by survey or engineer's inspection. The purchaser should also ensure that the purchase contract properly reflects their concerns and specifies details on which they may wish to rely.



Machinery:

Engine & Gearboxes:

- 1 x Perkins Sabre M65, 65 hp max 2600 rpm.
- Gear box (ZF Hurth) – 2015.



Maintenance & Performance:

- Engine hours – approx 6000hrs as of July 2022.
- Cruising speed – approx 6.5 knots / 1500 rpm.
- Fuel consumption approx. 3 L/h at 1500 rpm.
- Cruising range approx. 1680 Nm at 1500 rpm (approx. Barbados – Azores).

Disclaimer

These particulars have been prepared from information provided by the vendors and are intended as a general guide to the yacht, their accuracy cannot be guaranteed by us. The purchaser should confirm details of concern to them by survey or engineer's inspection. The purchaser should also ensure that the purchase contract properly reflects their concerns and specifies details on which they may wish to rely.

- Diesel pre filter between main tank / day tank (Racor) – 2017.
- 3 x Diesel pre filter between day tank / motor (CAV).
- Various engine spares.

Propulsion & Steering:

- Maxprop, 4 blade feathering propeller – 2017.
- Shaft seal (PPS) with forced water cooling – serviced 2019.
- Aqua drive CVB 15.10 – 2014.
- Propeller shaft 35mm.
- Cutless bearing with forced water lubrication – 2019.
- Steering pedestal (Lewmar Cobra) all bearings replaced – 2018.
- Stainless steel steering wheel, 48”.
- Autopilot instrument (B&G multi) – 2014.
- Course computer (B&G AP42) – 2014.
- Direct drive (Lewmar / Whithlock).
- Wind vane steering system (WindPilot Pacific Plus II).

Electrical Systems:

Battery Banks:

- Start battery 12 / 120 A (AGM) – 2017.
- Service batteries 12 V / 130 A (GEL) – 2019.
- Service batteries 24 V / 400 A (AGM) 12 V x 8 x 100 A – 2019.
- Voltage equalizer between batteries in 24 V bank (Victron Battery Balancer) – 2019.
- 12 V Battery control panel (Victron BMV-501) – 2012.
- 24 V Battery control panel (Victron BMV-700) – 2017.

Battery Management:

- Battery charger 220 V / 24 V / 25 A (Victron Skylla-TG 24/25).
- Battery charger 220 V / 12 V / 15 A (Victron Pallas 12/15 CE).
- 2 x Inverter / Battery charger 220 V / 24 V / 2000 W / 50 A (Victron Phoenix Combi 24/2000/50).
- Inverter remote control (Phoenix combi control).
- Converter 24 V / 12 V / 20 A (Victron Orion 24/12/20).

Alternators:

- Alternator 12 V / 75 A.
- Alternator 24 V / 75 A – 2017.
- 24 V spare alternator.

Generator:

- Portable Generator (Honda 1000 W).

Shore Power:

- 220 V shore power system with earth fault breaker and shore power cables.
- Isolation transformer (Victron 3,6 kVA switchable between 110V-220V, 220V-110V, 220V-220V) – 2012.

Plumbing Systems:

Watermaker:

- Watermaker 24 V approx. 55 L / h (Echo Tec BSM500).

Disclaimer

These particulars have been prepared from information provided by the vendors and are intended as a general guide to the yacht, their accuracy cannot be guaranteed by us. The purchaser should confirm details of concern to them by survey or engineer's inspection. The purchaser should also ensure that the purchase contract properly reflects their concerns and specifies details on which they may wish to rely.

Bilge Pumps:

- 2 x Automatic bilge pumps.
- Manual bilge pump.

Tankage:**Fuel:**

- Total fuel capacity of approx. 840 litres (700 + 140).

Fresh water:

- Total fresh water capacity of approx. 960 litres (660 + 250 + 50).

Grey/Blackwater Holding Tanks:

- Holding tanks approx. 140 litres (2 x 70).
- Aft tank with deck and sea evacuation, forward tank with sea evacuation.
- 3 x Grey water tanks, connected to galley sink, both heads sinks and showers, all with level switch and pumps.

Hot water tanks:

- Hot water approx. 40 litres (heated by engine, diesel heater and 220V inverter or shore power) – 2021.

Navigation & Communication Equipment:

- Compass with light.
- 4 x Sailing instruments (B&G multi) – 2014.
- AIS (True heading Graphene Plus Transponder class B) – 2014.
- Plotter 8" (B&G Zeus T8, WiFi) – 2014.
- 3 x electronic charts for the plotter covering most of the world.
- Tablet (Lenovo Yoga 10 HD) can connect by WiFi to plotter – 2014.
- Computer (HP) including charts for most of the world.
- Radar (B&G 3G) – 2014.
- GPS (B&G+) – 2014.
- GPS (True heading) – 2014.
- VHF (Simrad RS90) with AIS receiver – 2015.
- SSB (ICOM 718).
- SSB Tuner (ICOM AT-130).
- SSB modem (Pactor3).
- Insulated backstay for SSB antenna.
- Antenna for VHF.
- Antenna splitter for AIS.

Domestic Equipment:**Galley:**

- Electric induction stove (Elvita) – 2019.
- Electric oven with hot air and grill (Stiba) – 2017.
- Fridge box (Isotherm compact classic 24 V) – 2022.
- Cool box.

Heads/Showers:

- 2 x Toilet, electric vacuum flush (LaVac).

Disclaimer

These particulars have been prepared from information provided by the vendors and are intended as a general guide to the yacht, their accuracy cannot be guaranteed by us. The purchaser should confirm details of concern to them by survey or engineer's inspection. The purchaser should also ensure that the purchase contract properly reflects their concerns and specifies details on which they may wish to rely.

Description of layout from forwards:

Forward Cabin:

- Forward cabin with double berth.
- Mattresses – 2017.
- Topping mattress – 2017.
- Feathering spacers under the mattresses with forced ventilation (Froli Travell).
- 3 x Cabinets.
- Wardrobe.
- Storage under the berth.
- 2 x Opening skylight.



Disclaimer

These particulars have been prepared from information provided by the vendors and are intended as a general guide to the yacht, their accuracy cannot be guaranteed by us. The purchaser should confirm details of concern to them by survey or engineer's inspection. The purchaser should also ensure that the purchase contract properly reflects their concerns and specifies details on which they may wish to rely.



Forward Head:

- Toilet, electric vacuum flush (LaVac) – 2014.
- Shower.
- Towel dryer.
- Soap dispenser.
- Teak floor grating.
- 2 x Cabinets for storage.
- Opening skylight.



Saloon:

- Spacious saloon with C-shaped sofa and foldable table.
- 2 x Armchairs.
- 5 x Cabinets.

Disclaimer

These particulars have been prepared from information provided by the vendors and are intended as a general guide to the yacht, their accuracy cannot be guaranteed by us. The purchaser should confirm details of concern to them by survey or engineer's inspection. The purchaser should also ensure that the purchase contract properly reflects their concerns and specifies details on which they may wish to rely.

- 2 x Bookshelves.
- Storage space behind and below the armchairs.
- 3 x Opening skylights.
- Stand alone air heater – Refleks, Danish furnace.



Disclaimer

These particulars have been prepared from information provided by the vendors and are intended as a general guide to the yacht, their accuracy cannot be guaranteed by us. The purchaser should confirm details of concern to them by survey or engineer's inspection. The purchaser should also ensure that the purchase contract properly reflects their concerns and specifies details on which they may wish to rely.

Office Area:

- A table with a chair
- 4 x Cabinets
- 8 x Drawers



Galley:

- U-shaped functional galley.
- Off-white galley worktop (Corian) – 2015.
- 2 x sinks (NordTec) – 2014.
- Water mixer (Mora) – 2014.
- Storage space beside the stove (pendular, together with the stove and the oven).
- Double sink with single lever water tap (Mora) – 2014.
- Drinking water tap, gravity feed from 50 L drinking water tank (filled from deck or watermaker).
- Soap dispenser.
- 2 x upper cabinets.
- 2 x lower cabinets.
- 5 x drawers.



Disclaimer

These particulars have been prepared from information provided by the vendors and are intended as a general guide to the yacht, their accuracy cannot be guaranteed by us. The purchaser should confirm details of concern to them by survey or engineer's inspection. The purchaser should also ensure that the purchase contract properly reflects their concerns and specifies details on which they may wish to rely.



Navigation Area:

- Navigation area to starboard of the entrance.
- Chart table with a chair.
- Electric switch board.
- Navigation equipment.
- 3 x drawers.
- Storage space under the navigation table and a cabinet.



Disclaimer

These particulars have been prepared from information provided by the vendors and are intended as a general guide to the yacht, their accuracy cannot be guaranteed by us. The purchaser should confirm details of concern to them by survey or engineer's inspection. The purchaser should also ensure that the purchase contract properly reflects their concerns and specifies details on which they may wish to rely.



Aft Seating Area:

- Directly to port of the entrance is a table with seating for 5 people.
- 3 fixed seats plus 2 x bar stool seats.
- 2 x upper cabinets.
- Open space for storage of cutlery.
- Drawer under the table.
- 3 x lower cabinets.



Disclaimer

These particulars have been prepared from information provided by the vendors and are intended as a general guide to the yacht, their accuracy cannot be guaranteed by us. The purchaser should confirm details of concern to them by survey or engineer's inspection. The purchaser should also ensure that the purchase contract properly reflects their concerns and specifies details on which they may wish to rely.

Aft Cabin:

- Double berth.
- Mattresses.
- Topping mattress, full size.
- Feathering spacers under the mattresses with forced ventilation (Froli Travell).
- Wardrobe.
- Shelf.
- Storage space under the berth.
- Cupboard for storage of "long items".
- Opening port lights for ventilation.
- Opening skylight.

**Disclaimer**

These particulars have been prepared from information provided by the vendors and are intended as a general guide to the yacht, their accuracy cannot be guaranteed by us. The purchaser should confirm details of concern to them by survey or engineer's inspection. The purchaser should also ensure that the purchase contract properly reflects their concerns and specifies details on which they may wish to rely.

Aft Heads:

- Toilet, electric vacuum flush (LaVac).
- Shower.
- Towel dryer.
- Teak grating floor.
- 3 x Cabinets for storage.
- Cupboard for storage of "long items".

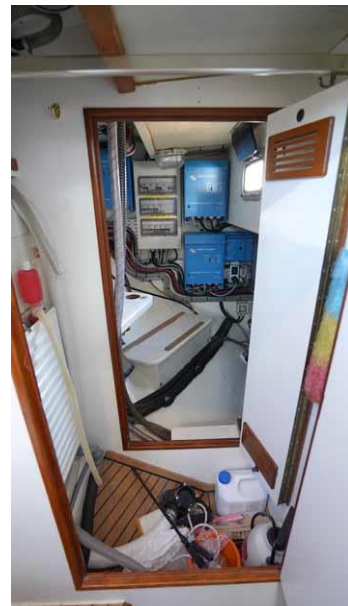


Wet Locker:

- Radiator.
- Hanging space for wet cloth.
- Drained floor.

Technical Equipment Cabin:

- A walk in cabin where most electric equipment is installed.
- Portlight.



Disclaimer

These particulars have been prepared from information provided by the vendors and are intended as a general guide to the yacht, their accuracy cannot be guaranteed by us. The purchaser should confirm details of concern to them by survey or engineer's inspection. The purchaser should also ensure that the purchase contract properly reflects their concerns and specifies details on which they may wish to rely.

Deck:

Rig:

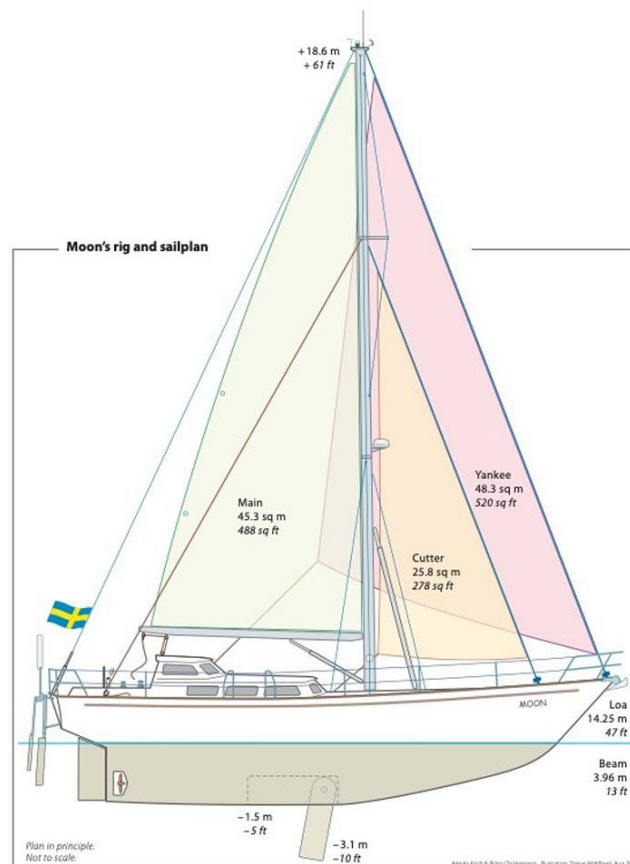
- Cutter mast head rig (Holland Spares).
- Double straight spreaders and diamond.
- Hydraulic aft stay tensioner (Harken) – 2018.
- Reefing system at the mast.
- Boom (Holland Spares).
- Boom vang with gas spring – 2017.
- Stack pack with lazy jacks – 2014.
- Telescopic boom for yankee (Seldén).
- Aft stay, Fore stay, Cutter stay and aft lowers replaced – 2020.
- Running rigging (Admiral 7000 dynema) – 2014.
- Running back stays for cutter sail (Admiral 7000 dynema) – 2014.
- Preventer system (Admiral 7000 dynema) – 2014.

Winches:

- 1 x Electric winch ST52 (Andersen).
- 2 x Manual winch ST52 (Andersen).
- 4 x Manual winch ST46 (Andersen).

Sails:

- Main sail 45 m² (Albatross) C3 DYS laminate, 5 x battens, 2 reefs – 2014.
- Yankee 48 m² (Albatross) C3 DYS laminate – 2014.
- Cutter 26 m² (Albatross) C3 DYS laminate – 2014.
- Anchor sail – 2014.



Disclaimer

These particulars have been prepared from information provided by the vendors and are intended as a general guide to the yacht, their accuracy cannot be guaranteed by us. The purchaser should confirm details of concern to them by survey or engineer's inspection. The purchaser should also ensure that the purchase contract properly reflects their concerns and specifies details on which they may wish to rely.

Anchoring & Mooring Equipment:

- Stainless steel bow fittings with 2 x anchor rollers.
- Electric windlass 24 V / 1500 W (Anchorlift) – 2018.
- Delta 40 kg, high strength stainless steel – 2014.
- Anchor chain 80 m / 10 mm stainless steel (Kettenwelder, Cromox G6 high tension duplex) – 2014.
- Anchor line 80 m / 18 mm.
- Snubber.
- Fortress (FX55) spare anchor.
- Anchor chain box (with storage space for the outboard and fuel tank).
- Chain cleaning water pump.
- 4 x Mooring cleats, stainless steel – 2014.
- 4 x Spring cleats, stainless steel – 2014.
- 6 x Mooring lines – 2014 / 2019.
- 6 x Fenders – 2015.
- 4 x Inflatable fenders – 2014.
- 6 x Mooring lines – 2014.

Cockpit / Aft Deck:

- Hard top / Dodger.
- Canvas enclosure for hardtop.
- Bimini
- 2 x Cockpit tables.
- 2 x Cockpit benches 1.8 m.
- 2 x lockers at aft deck.

**Disclaimer**

These particulars have been prepared from information provided by the vendors and are intended as a general guide to the yacht, their accuracy cannot be guaranteed by us. The purchaser should confirm details of concern to them by survey or engineer's inspection. The purchaser should also ensure that the purchase contract properly reflects their concerns and specifies details on which they may wish to rely.



Various deck equipment:

- 720 mm stanchions.
- Lifeline gates.
- Dedicated space for inflated dingy on fore deck.
- Dingy lifting system.
- Shower in the cockpit.
- Safety / swim / boarding ladder, foldable.
- 2 x Dorade vents on deck.

Tender & Outboard:

- Dingy in hypalon with aluminium bottom – 2013.
- Outboard 8.9 hp two stroke (Tohatsu) – 2013.

Disclaimer

These particulars have been prepared from information provided by the vendors and are intended as a general guide to the yacht, their accuracy cannot be guaranteed by us. The purchaser should confirm details of concern to them by survey or engineer's inspection. The purchaser should also ensure that the purchase contract properly reflects their concerns and specifies details on which they may wish to rely.

Safety Equipment:

- Life sling (Plastimo) – 2010.
- Personal AIS (SafeLink R10) – 2015.
- Epirb (McMurdo G5 Smartfinder) – serviced 2017.

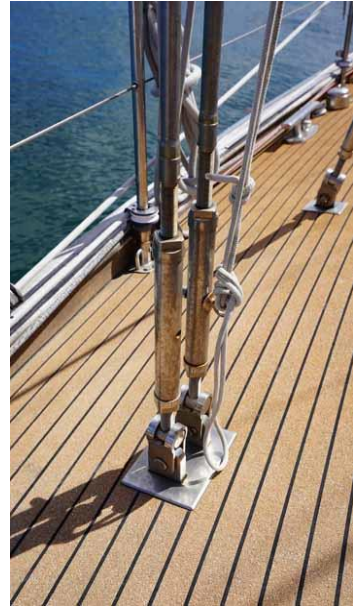
Fire-Fighting Equipment:

- 3 x Fire extinguishers.
- 2 x Automatic fire extinguishers in engine room and electric equipment cabin.



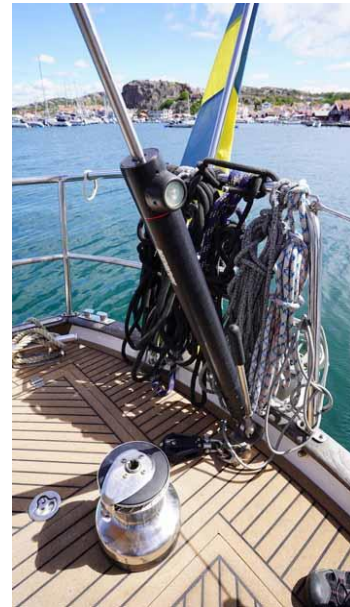
Disclaimer

These particulars have been prepared from information provided by the vendors and are intended as a general guide to the yacht, their accuracy cannot be guaranteed by us. The purchaser should confirm details of concern to them by survey or engineer's inspection. The purchaser should also ensure that the purchase contract properly reflects their concerns and specifies details on which they may wish to rely.



Disclaimer

These particulars have been prepared from information provided by the vendors and are intended as a general guide to the yacht, their accuracy cannot be guaranteed by us. The purchaser should confirm details of concern to them by survey or engineer's inspection. The purchaser should also ensure that the purchase contract properly reflects their concerns and specifies details on which they may wish to rely.



Disclaimer

These particulars have been prepared from information provided by the vendors and are intended as a general guide to the yacht, their accuracy cannot be guaranteed by us. The purchaser should confirm details of concern to them by survey or engineer's inspection. The purchaser should also ensure that the purchase contract properly reflects their concerns and specifies details on which they may wish to rely.