



ELINE V

LOA:	43'9" / 13.34m
Year:	2019
LWL:	40' / 12.2m
Beam:	13'3" / 4.04m
Draft:	7'7" / 2.3m
Displacement:	8,000kg / 17,637lb
Hull Material:	Carbon
Engines:	1 x Yanmar 4JH57, 57hp
Designer:	Stefan Qviberg
Accommodation:	5 berths in 3 cabins
Builder:	Arcona Yachts
Location:	Henån, Sweden
Price:	SEK7,400,000 VAT paid in EU

BERTHON

INTERNATIONAL YACHT BROKERS

Ängsvägen 16, 473 33 Henån

T: +46 304 694 000

E: brokers@berthonscandinavia.se

W: www.berthonscandinavia.com

Disclaimer

These particulars have been prepared from information provided by the vendors and are intended as a general guide to the yacht, their accuracy cannot be guaranteed by us. The purchaser should confirm details of concern to them by survey or engineer's inspection. The purchaser should also ensure that the purchase contract properly reflects their concerns and specifies details on which they may wish to rely.

Brokers Comments:

The Arcona 435 is a fast performance cruiser. It was introduced in 2018 and was the winner of European Yacht of the Year in 2019. Arcona is a quick, modern and easy to manage yacht that will win races one weekend and can be used for family cruising the following weekend.

Stefan Qviberg, designer of the Arcona 435, managed to create an appealing yacht for owners that want both comfort on long passages and sailing performance for racing. Stefan explained:

“The 435 has an efficient sail design, a low weight and the characteristic stability exhibited in every Arcona yacht. The 435 is modern inside and out.”

The Arcona 435 is both safe and stable with laminated bulkheads and Arcona’s galvanized steel girder. The Arcona 435 has a slightly larger sail area than previous models which gives optimized upwind performance. ELINA V is a joy to sail as she responds quickly to trim input and doesn’t weigh more than 8990kg. Arcona 435 ELINE V was specified with carbon hull, deck and spars which reduces her weight further.

Arcona 435 Carbon ELINE V has been used for cruising on the Swedish west coast and been serviced and winter stored at Orust Yacht Service.

The interior has a modern look and is made of oak with teak floorboards and white ceiling. The layout offers 3 cabins with 2 double berths and a single berth. There are two bathrooms and a separate shower compartment in one of the bathrooms. A saloon with a sofa, two comfortable armchairs and a folding table and an L-shaped galley is situated just at the entrance stair.

There is teak laid on the deck, coach roof and cockpit. In the cockpit there are two carbon steering wheels, two plotters and four sailing instruments. The mast is carbon with a furler boom. There is a hydraulic aft stay tensioner and boom vang. There are four electric winches to make sail handling easy.

ELINE V is very well equipped and comes with retractable bow and stern thrusters, lithium batteries, generator, air conditioning, diesel heater, 40” TV, a superb sound system and much more...

If you are looking for a fully equipped, fast performance cruiser, lightly used for family sailing being in a very good condition this might be the yacht for you, who knows, maybe ELINE V will be the winner of 2023 ARC...

Key Facts:

- Carbon mast.
- Furler boom.
- 4 x electric winches.
- Main, Jib, Gennaker and Code 0.
- Bow and Stern thruster.
- Lithium batteries.
- Generator.
- Complete navigation system (B&G).
- Air conditioning.
- Sleep 5 persons in 3 cabins.
- Serviced, maintained, stored inside during wintertime at Orust Yacht Service.

Disclaimer

These particulars have been prepared from information provided by the vendors and are intended as a general guide to the yacht, their accuracy cannot be guaranteed by us. The purchaser should confirm details of concern to them by survey or engineer’s inspection. The purchaser should also ensure that the purchase contract properly reflects their concerns and specifies details on which they may wish to rely.

Construction:

RCD Status: The yacht conforms with the essential safety requirements of Directive 94/25EC or RCDII (2013/53/EU as appropriate (Recreational Craft Directive) and is categorised A – “Ocean”

Hull, Deck & Superstructure Construction:

- Carbon hull.
- Carbon deck.
- Carbon bow sprit.
- Divinycell core special cut (saves approx. 130 kg weight).
- Grey trim lines.
- Teak on deck and on coach roof.

Keel & Rudder:

- Spade rudder.
- Cable steering.

Machinery:**Engine & Gearboxes:**

- 1 x Yanmar 4JH57, 57hp.

**Propulsion & Steering:**

- 3 blade folding propeller (Flexofold).
- Bow thruster, retractable, stepless drive.
- Stern thruster, retractable, stepless drive.
- Remote control for bow- and stern thruster.

Disclaimer

These particulars have been prepared from information provided by the vendors and are intended as a general guide to the yacht, their accuracy cannot be guaranteed by us. The purchaser should confirm details of concern to them by survey or engineer's inspection. The purchaser should also ensure that the purchase contract properly reflects their concerns and specifies details on which they may wish to rely.

Electrical Systems:

- 5 x additional 220 V outlets (galley, aft head, aft cabin, fw cabin and nav area).

Battery Banks:

- Service battery Lithium 360 Ah (Mastervolt Li-on Ultra).
- Bow thruster and windlass battery, Lithium 180 Ah (Mastervolt Li-on Ultra).
- Start battery.

Battery Chargers:

- Combi charger / Inverter 12V/3000W/150A (Mass Combi Pro).
- Battery monitor instrument (Mastervolt).
- Isolation transformer (Mastervolt Mass GI).

Generator:

- Generator 3,6 kW (Fisher Panda 5000 Neo).
- Special mounting for generator to reduce noise (Maxa).

Other Electrical:

- Solar panel approx. 45 W.

Tankage:

- Water capacity approx. 300 L.
- Diesel capacity approx. 180 L.
- Hot water capacity approx. 40 L.
- Gas bottle.

Navigation & Communication Equipment:

- Compass.
- 4 x Sailing instruments (B&G).
- 2 x MFD 12" (B&G).
- Charts for Swedish west coast and Denmark.
- NMEA gateway engine harness for showing engine data in the plotters.
- Autopilot.
- Wireless remote control for autopilot.
- Radar (B&G Halo 20+).
- Black painted radar cover.
- VHF / DSC (B&G).
- WiFi Router with external antenna.

Domestic Equipment:**Galley:**

- Fridge, water cooled (Isotherm SP).
- Gas stove with 3 burners and oven (ENO).
- Gas alarm.
- Remote shut off gas valve.

Disclaimer

These particulars have been prepared from information provided by the vendors and are intended as a general guide to the yacht, their accuracy cannot be guaranteed by us. The purchaser should confirm details of concern to them by survey or engineer's inspection. The purchaser should also ensure that the purchase contract properly reflects their concerns and specifies details on which they may wish to rely.

Heads/Showers:

- 2 x Electric toilets.

Heating & Ventilation:

- Diesel heater (Eberspracher D5).
- Air Conditioning in forward cabin (8 BTU).

Entertainment:

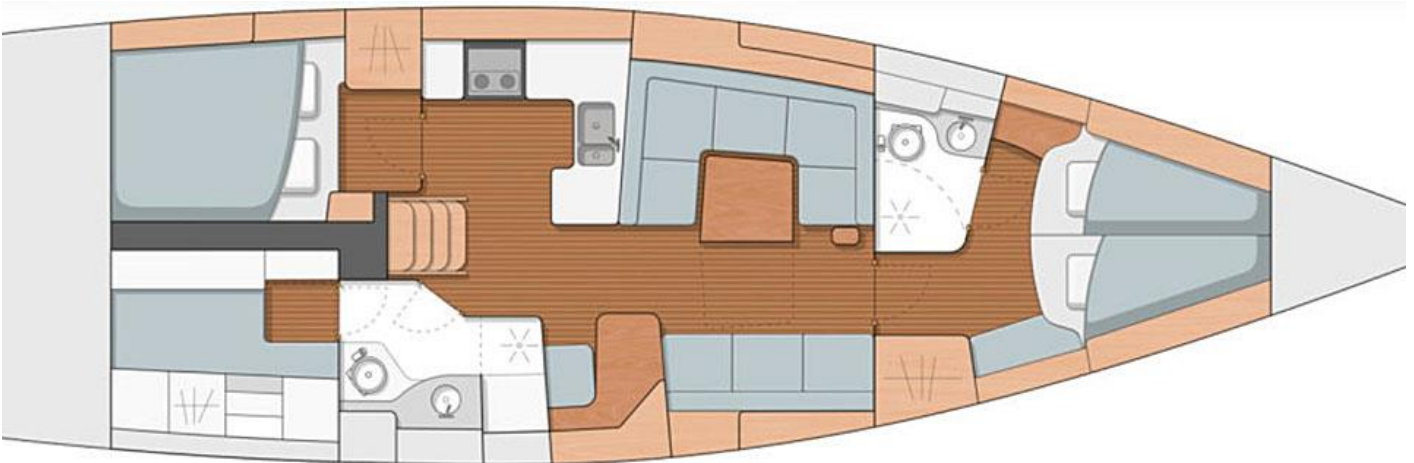
- TV 40".
- Stereo (Fusion RA 770).
- Amplifier (SG-DA51600).
- 2 x Speaker in saloon.
- 2 x Speakers in cockpit.

Lighting:

- Night lights in saloon and galley.

Accommodation:**Summary of Accommodation:**

- 5 berths 3 cabins.
- Interior in oak.
- Teak floorboards.
- White ceiling.

Internal Layout:

NB! *ELINE* has two armchairs instead of the sofa to starboard in the saloon.

Description of layout from forwards:**Forward Cabin with En Suite Bathroom:**

- Double berth.
- Pocket spring mattresses.
- Topping mattresses.
- Seat.

Disclaimer

These particulars have been prepared from information provided by the vendors and are intended as a general guide to the yacht, their accuracy cannot be guaranteed by us. The purchaser should confirm details of concern to them by survey or engineer's inspection. The purchaser should also ensure that the purchase contract properly reflects their concerns and specifies details on which they may wish to rely.

- 2 x Wardrobes.
- 4 x Drawers under the berth.
- 4 x Cupboards.
- 2 x Shelves.
- 2 x Hull windows.
- Skylight.
- Grab rail covered with leather.
- Blinds at all portlights and skylights.



Forward Bathroom:

- Electric toilet.
- Wash basin.
- Shower.
- 3 x Cupboards.
- Mirror.
- Opening skylight.

Disclaimer

These particulars have been prepared from information provided by the vendors and are intended as a general guide to the yacht, their accuracy cannot be guaranteed by us. The purchaser should confirm details of concern to them by survey or engineer's inspection. The purchaser should also ensure that the purchase contract properly reflects their concerns and specifies details on which they may wish to rely.



Saloon:

- L-shaped sofa to port.
- 2 x Comfortable chairs to starboard.
- Alcantara upholstery (Grey Lime).
- Foldable saloon table with compass inlay.
- 2 x Additional seats at the saloon table, removable.
- 4 x Cupboards.
- Hull portlight to port.
- 4 x Portlights.
- 2 Skylights.
- Blinds at all portlights and skylights.



Disclaimer

These particulars have been prepared from information provided by the vendors and are intended as a general guide to the yacht, their accuracy cannot be guaranteed by us. The purchaser should confirm details of concern to them by survey or engineer's inspection. The purchaser should also ensure that the purchase contract properly reflects their concerns and specifies details on which they may wish to rely.

**Disclaimer**

These particulars have been prepared from information provided by the vendors and are intended as a general guide to the yacht, their accuracy cannot be guaranteed by us. The purchaser should confirm details of concern to them by survey or engineer's inspection. The purchaser should also ensure that the purchase contract properly reflects their concerns and specifies details on which they may wish to rely.

**Disclaimer**

These particulars have been prepared from information provided by the vendors and are intended as a general guide to the yacht, their accuracy cannot be guaranteed by us. The purchaser should confirm details of concern to them by survey or engineer's inspection. The purchaser should also ensure that the purchase contract properly reflects their concerns and specifies details on which they may wish to rely.



L-Shaped Galley:

- Corian worktop.
- Double sink.
- Fresh water mixer crane.
- Arcona glasses, cutlery, plates and bowls in custom made storage space.
- Plenty of lockers for storage.
- Opening portlight above the stove.

Disclaimer

These particulars have been prepared from information provided by the vendors and are intended as a general guide to the yacht, their accuracy cannot be guaranteed by us. The purchaser should confirm details of concern to them by survey or engineer's inspection. The purchaser should also ensure that the purchase contract properly reflects their concerns and specifies details on which they may wish to rely.



Navigation Area:

- Chart table.
- Seat.
- 4 x Drawers.
- Electric switch board.



Disclaimer

These particulars have been prepared from information provided by the vendors and are intended as a general guide to the yacht, their accuracy cannot be guaranteed by us. The purchaser should confirm details of concern to them by survey or engineer's inspection. The purchaser should also ensure that the purchase contract properly reflects their concerns and specifies details on which they wish to rely.



Aft Bathroom:

- Electric toilet.
- Wash basin.
- Separate shower compartment.
- Glass door for the shower compartment.
- 3 x Cupboards.
- Mirror.
- Opening portlight.



Aft Cabin to Port:

- Double berth.
- Topping mattresses.
- 2 x Wardrobes.
- 2 x Lockers.
- Shelf.
- Opening portlight (to cockpit).

Disclaimer

These particulars have been prepared from information provided by the vendors and are intended as a general guide to the yacht, their accuracy cannot be guaranteed by us. The purchaser should confirm details of concern to them by survey or engineer's inspection. The purchaser should also ensure that the purchase contract properly reflects their concerns and specifies details on which they may wish to rely.



Aft Cabin to Starboard:

- Entrance via starboard aft bathroom.
- Single berth.
- 4 x Lockers.
- Shelf.
- Opening portlight (to cockpit).

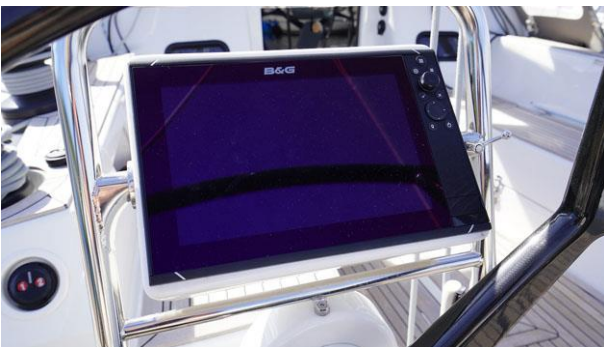


Disclaimer

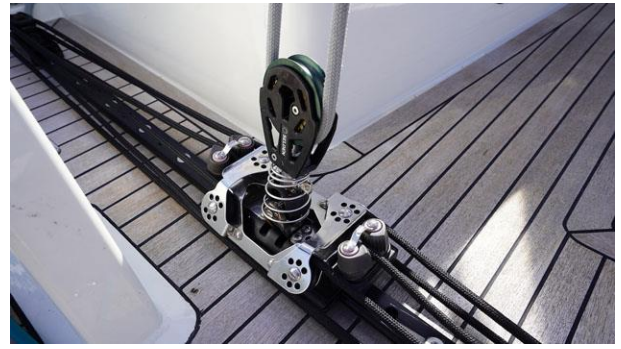
These particulars have been prepared from information provided by the vendors and are intended as a general guide to the yacht, their accuracy cannot be guaranteed by us. The purchaser should confirm details of concern to them by survey or engineer's inspection. The purchaser should also ensure that the purchase contract properly reflects their concerns and specifies details on which they may wish to rely.

**Cockpit:**

- Cockpit table.
- 3 x Pad eyes in cockpit for harness.

**Disclaimer**

These particulars have been prepared from information provided by the vendors and are intended as a general guide to the yacht, their accuracy cannot be guaranteed by us. The purchaser should confirm details of concern to them by survey or engineer's inspection. The purchaser should also ensure that the purchase contract properly reflects their concerns and specifies details on which they may wish to rely.

**Disclaimer**

These particulars have been prepared from information provided by the vendors and are intended as a general guide to the yacht, their accuracy cannot be guaranteed by us. The purchaser should confirm details of concern to them by survey or engineer's inspection. The purchaser should also ensure that the purchase contract properly reflects their concerns and specifies details on which they may wish to rely.

Deck Equipment:*Rig:*

- Carbon mast.
- Carbon furling boom (Furler boom).
- Hydraulic aft stay tensioner.
- Hydraulic boom vang.
- Electric pump for aft stay tensioner and boom vang.
- Rod rig.
- Aft stay (Dynex).
- Internal mast jack.
- Pump for mast jack.
- Main and Jib halyards (Spectra).
- Electric jib furler (Seldén).
- Electric furler (Profurl eNex 5.0) on the bow sprit.
- Tri color / anchor light (LED).
- Up lights on lower spreaders.
- Down lights on lower spreader.
- Cockpit boom light.

Winches:

- 2 x Electric primary winches (Harken PRO).
- 1 x Electric halyard winch (Harken).
- 1 x Manual halyard winch.
- 1 x Electric main sheet winch (Harken).
- 1 x Manual main sheet winch (Harken).

Sails:

- Main sail 62 m² (UK Endumax).
- Jib 107% 52 m² (UK Endumax).
- Jib cover.
- Code 0 (Elvström).
- Asymmetric spinnaker bag mounted in the sail locker for easy access.

Sailing Gear:

- Deck gear (Harken).
- Barber haul arrangement for gennaker and Code 0.
- Asymmetric spinnaker equipment.
- Jib and Code 0 halyard line clutches (Spinlock XXA).
- 2 x Cross over block at the halyard winches.

General:

- Shower at the bathing platform.
- Sea water deck wash pump with 14 m hose.
- Gas bottle, composite, 5kg.
- Bow ladder.

Anchoring & Mooring Equipment:

- Electric windlass in the bow.
- Stainless steel anchor.

Disclaimer

These particulars have been prepared from information provided by the vendors and are intended as a general guide to the yacht, their accuracy cannot be guaranteed by us. The purchaser should confirm details of concern to them by survey or engineer's inspection. The purchaser should also ensure that the purchase contract properly reflects their concerns and specifies details on which they may wish to rely.

- 40 m stainless steel chain.
- 4 x Mooring lines.
- 4 x Fenders.

Covers, Canvas & Cushions:

- Covers for steering wheels and pedestal.
- Cockpit cushions with back support (Canvas Cadet Grey).
- Fastening system for cockpit cushions (Rec Eliasson).

Safety Equipment:

- Life line gate ways.
- Life Buoy (Swedebuoy Baltic).



Disclaimer

These particulars have been prepared from information provided by the vendors and are intended as a general guide to the yacht, their accuracy cannot be guaranteed by us. The purchaser should confirm details of concern to them by survey or engineer's inspection. The purchaser should also ensure that the purchase contract properly reflects their concerns and specifies details on which they may wish to rely.

**Disclaimer**

These particulars have been prepared from information provided by the vendors and are intended as a general guide to the yacht, their accuracy cannot be guaranteed by us. The purchaser should confirm details of concern to them by survey or engineer's inspection. The purchaser should also ensure that the purchase contract properly reflects their concerns and specifies details on which they may wish to rely.

**Disclaimer**

These particulars have been prepared from information provided by the vendors and are intended as a general guide to the yacht, their accuracy cannot be guaranteed by us. The purchaser should confirm details of concern to them by survey or engineer's inspection. The purchaser should also ensure that the purchase contract properly reflects their concerns and specifies details on which they may wish to rely.

BERTHON

synonymous with yachting since 1877