



MISS LOKA

LOA:	39'3" / 11.97m
Year:	2008
Beam:	11'10" / 3.6m
Draft:	5'3" / 1.6m (shallow draft keel)
Displacement:	9,500kg / 20,943lb
Hull Material:	GRP
Engines:	1 x Yanmar 4JH4, 54hp
Designer:	Kaj Gustafsson
Accommodation:	4 berths in 2 cabins
Builder:	Nauticat Yachts OY
Location:	Henån, Sweden
Price:	€295,000 VAT paid in EU

BERTHON

INTERNATIONAL YACHT BROKERS

Ängsvägen 16, 473 33 Henån

T: +46 304 694 000

E: brokers@berthonscandinavia.se

W: www.berthonscandinavia.com

Disclaimer

These particulars have been prepared from information provided by the vendors and are intended as a general guide to the yacht, their accuracy cannot be guaranteed by us. The purchaser should confirm details of concern to them by survey or engineer's inspection. The purchaser should also ensure that the purchase contract properly reflects their concerns and specifies details on which they may wish to rely.

Broker's Comments:

Sail the open seas or island hop along the coast in style and comfort with this stunning Nauticat 385! A true testament to Finnish craftsmanship, this exceptional sailing yacht effortlessly combines performance, safety, and elegance. With her distinctive design, this captivating vessel is perfect for those seeking memorable experiences on the water.

Offering superior performance and comfort, the Nauticat 385 was designed with exceptional seafaring capabilities in mind. The powerful 54hp engine, combined with a well-balanced hull and a semi-skeg hung rudder, ensures smooth sailing in diverse conditions.

Step aboard the Nauticat 385, and you will be greeted by a spacious cockpit, featuring comfortable seating and a convenient folding table - perfect for socialising, dining or simply enjoying the ocean breeze. The single-wheel setup provides a clear line of sight, making navigation and manoeuvring a breeze.

The interior of the Nauticat 385 is a masterpiece. The inviting atmosphere is accentuated by the use of high-quality teak and ample natural light from the generously sized windows and hatches.

The raised saloon boasts a C-shaped settee with a fixed solid table. Opposite the settee, you will find a well-equipped navigation station / inner steering position, with seating. The fully equipped galley, complete with a stove, oven, refrigerator and ample storage, allows you to prepare delicious meals while enjoying the company of your guests.

The spacious owner's cabin, located in the aft, features a large double bed, ample storage and an en-suite head. The forward guest cabin provides a comfortable double berth, storage and a private head with a separate shower compartment.

The Nauticat 385 has an impressive array of safety features. The sturdy handrails, solid stainless-steel pulpits, and lifelines ensure security while moving around the deck. The liferaft is easily accessible in the stern.

Constructed with a robust hand-laid GRP hull and a lead keel, the Nauticat 385 is built for endurance. The yacht's high-quality fittings and hardware, coupled with her meticulous attention to detail, are a testament to the world-renowned Finnish boat building tradition.

The Nauticat 385 offers the perfect blend of luxury, comforts, and safety, ensuring unforgettable sailing experiences for you and your loved ones. Contact our brokerage team today to arrange a viewing and let the Nauticat 385 take you on the adventure of a lifetime.

Owner's Comments:

My wife and I have been sailing together for over 50 years. We have owned many boats, both sailboats and motorboats. When my father bought a Nauticat 33 in 1978, we got a Hallberg-Rassy 352. This allowed us to experience Nauticat's quality up close. That is why we purchased a Nauticat 38, which after a few summers on the west coast, we took through the canal route to the Mediterranean in 1993. In 1999, we traded our Nauticat 38 for a new Nauticat 321. We had the 321 for 12 years. When we were looking to buy a boat for the Swedish West Coast in 2017, we deliberately searched for a Nauticat 385 (the big sister to the 321). According to the shipyard, it is the best model - safe, secure, and easy to sail.

Key Facts:

- Sleep 4 persons in 2 cabins.
- Shallow draft keel 1.6m.
- In-mast furling with progressive electric winch.
- 2 x Electric winches.

Disclaimer

These particulars have been prepared from information provided by the vendors and are intended as a general guide to the yacht, their accuracy cannot be guaranteed by us. The purchaser should confirm details of concern to them by survey or engineer's inspection. The purchaser should also ensure that the purchase contract properly reflects their concerns and specifies details on which they may wish to rely.

- Dark blue hull with white trim lines.
- Solid teak deck in good condition for its age.
- Bow thruster.
- Yanmar 54hp.
- 3-blade folding propeller.
- Diesel, electric and air heating systems.
- AGM Service batteries 640 Ah – 2022.
- Insolation transformer.
- 2 x 230 V battery chargers.
- Inverter.
- Solar panel.
- 2 x MFD (Raymarine Axiom) – 2020.
- Radar, Auto pilot, AIS.
- Electric windlass.
- Anchor in the stern.
- Liferaft.
- Always professionally maintained and stored inside during winter season.

Construction:

RCD Status: The yacht conforms with the essential safety requirements of Directive 94/25EC or RCDII (2013/53/EU as appropriate (Recreational Craft Directive) and is categorised A – “Ocean”

Hull, Deck & Superstructure Construction:

- GRP construction.
- Dark blue hull with white trim lines.
- 4 layers of epoxy primer on under water hull.
- Bottom painted red antifouling – 2023.
- Solid teak on deck, in cockpit and on swim platform - in good condition for its age. The teak deck is treated with Sioox.

Keel & Rudder:

- Fin keel with rudder on partial skeg.

Machinery:**Engine & Propulsion:**

- Yanmar 4JH4, 54hk, approx. 1,250 hrs.
- Shaft drive.

**Disclaimer**

These particulars have been prepared from information provided by the vendors and are intended as a general guide to the yacht, their accuracy cannot be guaranteed by us. The purchaser should confirm details of concern to them by survey or engineer's inspection. The purchaser should also ensure that the purchase contract properly reflects their concerns and specifies details on which they may wish to rely.

- 3-blade folding propeller (Flexofold).
- Fixed propeller as spare.
- Bow thruster (Maxpower 100 DUO 90kg / 8,9 hp / 12V).

Electrical Systems:*230 V System:*

- 230 V shore power system.
- Insolation transformer (Mastervolt MASS GI 3,6 kW / 230V).
- Shore power cable.
- 4 x 230 V sockets.

Battery Banks:

- Service batteries AGM 12 V / 480 Ah (3 x 160 Ah) – 2022.
- Start battery 12 V / 160 Ah – 2022.
- Battery monitoring instrument (Mastervolt MICC).

Battery Chargers:

- Battery charger 230 V / 12 V / 50 A for service batteries (Mastervolt IVO Smart).
- Battery charger 230 V / 12 V / 30 A for engine battery (Mastervolt).

Inverters:

- 230 V inverter (Mastervolt MASS sine wave inverter 230V/800W).

Alternators:

- Alternator 12 V / 130 Amp.
- Alternator 12 V / 50 Amp.

Other Electrical:

- Solar panel 40 W with regulator, connected to service batteries.

Plumbing Systems:*Fresh Water & Water Heating System:*

- Hot water boiler, connected to both engine and shore power (Isotemp).
- Electric fresh water pump.
- Manual foot pump for fresh water in galley.
- Prepared for sea water foot pump.

Bilge Pumps:

- Manual bilge pump, cockpit operated.
- Electrical bilge pump, with float switch, auto/manual mode.

Greywater:

- Shower greywater is drained into the bilge and pumped out by the electric bilge pump.

Tankage:*Fuel:*

- 2 x tanks, capacity approx. 335 L.

Disclaimer

These particulars have been prepared from information provided by the vendors and are intended as a general guide to the yacht, their accuracy cannot be guaranteed by us. The purchaser should confirm details of concern to them by survey or engineer's inspection. The purchaser should also ensure that the purchase contract properly reflects their concerns and specifies details on which they may wish to rely.

Fresh Water:

- 2 x tanks, capacity 440 L.

Blackwater tanks:

- 2 x tanks, capacity approx. 130 L, both tanks with sea and deck evacuation.
- Tank level meters (Globus).

Navigation Equipment:

- MFD (Raymarine Axiom 12") – 2020.
- MDF (Raymarine Axiom 8") – 2020.
- Plotter, stand alone, behind sprayhood (Garmin).
- Radar (Raymarine RD424, 4 kW) mounted on the mast – 2020.
- Autopilot (Raymarine S2G) – 2020.
- 2 x Autopilot instruments (ST6002).
- Autopilot remote control (Raymarine S100).
- AIS transceiver – 2019.
- Wind transducer (Raymarine ST60).
- 3 x Sailing instruments - wind, speed, depth (ST60).
- Graphic instrument (Raymarine ST60).
- GPS antenna (Raystar 125).

Communication:

- VHF DSC (Raymarine RAY-55 E DSC D-class).
- VHF antenna in the mast.
- Raymarine camera in the mast, not connected.

Domestic Equipment:*Heating & Ventilation:*

- 4 x 230 V Electric heaters connected to shore power system.
- Diesel heater (Webasto AT500D, 5 kW heater with thermostat).
- Air heater (Aurora, 6 kw, connected to engine).

Entertainment:

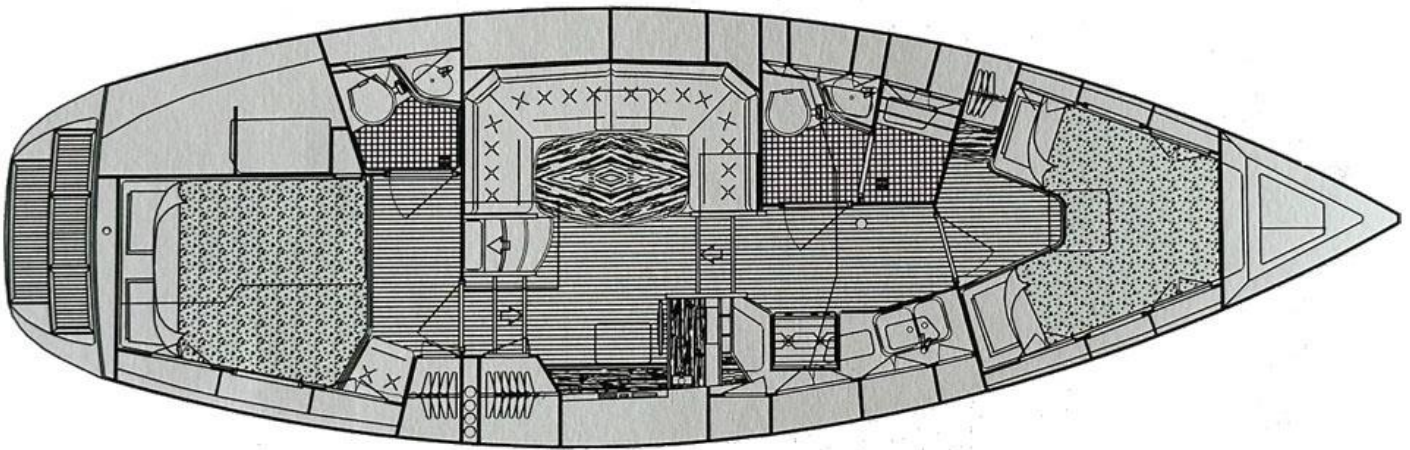
- TV / FM antenna (Glomex).
- TV / FM antenna socket in aft cabin.
- Stereo DVD/MP3/CD player (Pioneer).
- 6 x Speakers in saloon, aft cabin and cockpit.

Accommodation:*Summary of Accommodation:*

- 4 berths in 2 cabins.
- Carpets in all cabins – 2019.
- Curtains – 2019.
- Upholstery in saloon (Alcantara Skyblue).
- 2 x Mosquito screens for skylights.
- All hoses for toilets replaced – 2020.

Disclaimer

These particulars have been prepared from information provided by the vendors and are intended as a general guide to the yacht, their accuracy cannot be guaranteed by us. The purchaser should confirm details of concern to them by survey or engineer's inspection. The purchaser should also ensure that the purchase contract properly reflects their concerns and specifies details on which they may wish to rely.

Internal Layout:*Description of layout from forwards:**Forward (Guest) Cabin:*

- The forward guest cabin offers a v-berth with an infill to make it a double berth, wardrobes, lockers and shelves for storage.
- Marine toilet (Jabsco) – 2018.
- Teak framed mirror.
- Anti-moisture material below the berths.
- Roll-shutter for skylight.

**Disclaimer**

These particulars have been prepared from information provided by the vendors and are intended as a general guide to the yacht, their accuracy cannot be guaranteed by us. The purchaser should confirm details of concern to them by survey or engineer's inspection. The purchaser should also ensure that the purchase contract properly reflects their concerns and specifies details on which they may wish to rely.



Forward Head:

- Light and spacious heads with separate shower compartment.
- Corian countertop.
- Fresh water mixer tap.
- Marine toilet (Jabsco) – 2018.



Disclaimer

These particulars have been prepared from information provided by the vendors and are intended as a general guide to the yacht, their accuracy cannot be guaranteed by us. The purchaser should confirm details of concern to them by survey or engineer's inspection. The purchaser should also ensure that the purchase contract properly reflects their concerns and specifies details on which they may wish to rely.

Galley:

- A longitude galley located forward of the saloon offering plenty of storage space, cupboards, drawers and dry storage.
- Corian galley worktop.
- Gas stove with oven, two burners (Smev).
- Fridge box (Isotherm).
- Fridge with door 49 L - located at the navigation area (Isotherm).
- Remote shut off valve for LPG (Truma) with gas alarm.
- Twin sinks.
- Cutting board.
- Fresh water mixer.
- Holder for glass and plates.
- Adjustable teak pegs in two cupboards.
- Cover plate for stove in galley.

**Disclaimer**

These particulars have been prepared from information provided by the vendors and are intended as a general guide to the yacht, their accuracy cannot be guaranteed by us. The purchaser should confirm details of concern to them by survey or engineer's inspection. The purchaser should also ensure that the purchase contract properly reflects their concerns and specifies details on which they may wish to rely.

Saloon:

- Deck saloon with panoramic view, a C-shaped sofa and a solid saloon table to port of the entrance.
- Saloon table with marquetry compass inlay.
- Ship's clock and barometer (Wempe).
- Plenty of storage space.

*Navigation Area / Inner Steering Position:*

- The navigation area / Inner steering position is located to starboard of the entrance stair.
- Navigation table, drawers cupboards and a seat.

**Disclaimer**

These particulars have been prepared from information provided by the vendors and are intended as a general guide to the yacht, their accuracy cannot be guaranteed by us. The purchaser should confirm details of concern to them by survey or engineer's inspection. The purchaser should also ensure that the purchase contract properly reflects their concerns and specifies details on which they may wish to rely.

Aft Cabin:

- Exclusive owner's aft cabin with en suite head, double berth, plenty of storage space in wardrobe, cupboards and drawers.
- Safe box.
- 4 x Reading lights.
- Anti-moisture material below the berths.
- Topping mattresses in aft cabin (Unikulma, ventilated version).
- Teak framed mirror on entrance door.

**Disclaimer**

These particulars have been prepared from information provided by the vendors and are intended as a general guide to the yacht, their accuracy cannot be guaranteed by us. The purchaser should confirm details of concern to them by survey or engineer's inspection. The purchaser should also ensure that the purchase contract properly reflects their concerns and specifies details on which they may wish to rely.



Aft Head:

- Light head.
- Corian countertop.
- Marine toilet (Jabsco) – 2018.
- Fresh water mixer tap.



Disclaimer

These particulars have been prepared from information provided by the vendors and are intended as a general guide to the yacht, their accuracy cannot be guaranteed by us. The purchaser should confirm details of concern to them by survey or engineer's inspection. The purchaser should also ensure that the purchase contract properly reflects their concerns and specifies details on which they may wish to rely.

Deck Equipment:*Rig:*

- In-mast furling (Seldén).
- Outhaul and reefing lines operated (by electric winch) from the cockpit.
- Covers for turnbuckles (aluminum).
- Furler for Genoa (Seldén).
- Spinnaker pole.
- Radar reflector (Firdell Blipper) with stainless steel brackets on the mast.
- Windex.

Winches:

- 1 x Electric Main Furling / Main sheet winch (Seldén 3-speed) – 2022.
- 2 x Electric Genoa winches (Harken 46) – 2018.
- 2 x Manual Spinnaker winches (Harken 40).

Sails:

- Furling main sail (North 2T-Cut, 130 TX Gatorback Dyneema, vertical battens) – 2020.
- Furling genoa (North 2T-Cut, 130 TX Gatorback Dyneema, UV- protection).
- Furling jib (North, radian NDR 9,0 with vertical battens).
- Spinnaker with snuffer (Norths 2T-Cut NorLon).
- Code 1 on furler – 2019.

Cockpit:

- Foldable, cockpit table in teak.
- Cushions for cockpit seats.
- Steering wheel, stainless steel, covered with skin.
- Stainless steel grab rail at the pedestal.
- 2 x Cockpit lockers (one large for storage and one for gas bottle).
- Gas bottle 6 kg.
- Holders for bottles in cockpit

Disclaimer

These particulars have been prepared from information provided by the vendors and are intended as a general guide to the yacht, their accuracy cannot be guaranteed by us. The purchaser should confirm details of concern to them by survey or engineer's inspection. The purchaser should also ensure that the purchase contract properly reflects their concerns and specifies details on which they may wish to rely.

**Disclaimer**

These particulars have been prepared from information provided by the vendors and are intended as a general guide to the yacht, their accuracy cannot be guaranteed by us. The purchaser should confirm details of concern to them by survey or engineer's inspection. The purchaser should also ensure that the purchase contract properly reflects their concerns and specifies details on which they may wish to rely.

Anchoring:

- Bow: Electrical windlass (Lofrans Kobra), CQR 35 lbs, 40 m calibrated galvanized chain. Can be operated by foot switch at the deck and/or from the control panel in cockpit.
- Stern: Stainless steel Bruce type anchor, 5 m chain and 40 m line on a reel.

Mooring Equipment:

- 4 x Cleats.
- 2 x Spring cleats.
- 4 x Mooring lines.
- 6 x Fenders.
- 2 x Boarding gates.
- 2 x Bow ladders.
- Boat hook.

Covers, Canvas & Cushions:

- Sprayhood, with stainless steel frame.
- Old sprayhood as spare.
- Sun cover for steering wheel and steering console.
- Custom made sun cover for cockpit, to be placed over the boom.

Safety Equipment:

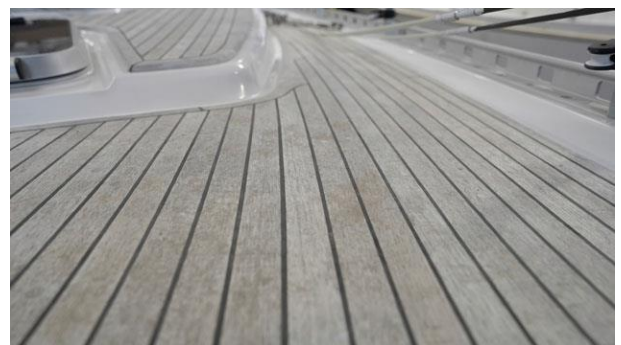
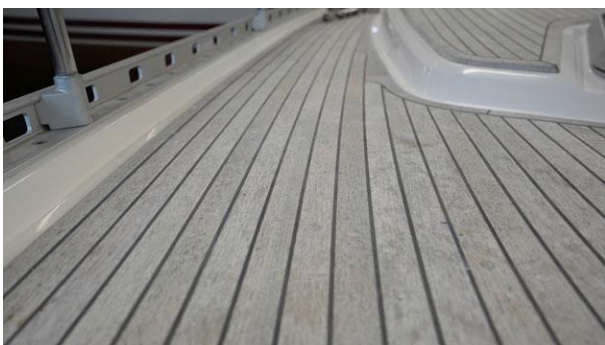
- Life raft - 2018, service needed.

Various deck equipment:

- Bow platform in stainless steel and teak ribs.
- Synthetic molded rubbing strake.
- 3 x Windshield wipers for front windows.
- New glass forward skylight - approx. 2019.
- Bracket for outboard engine.

Disclaimer

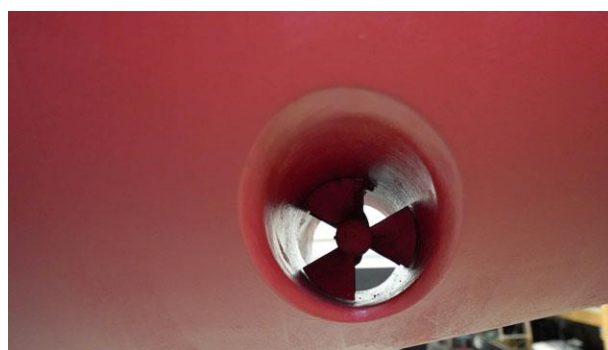
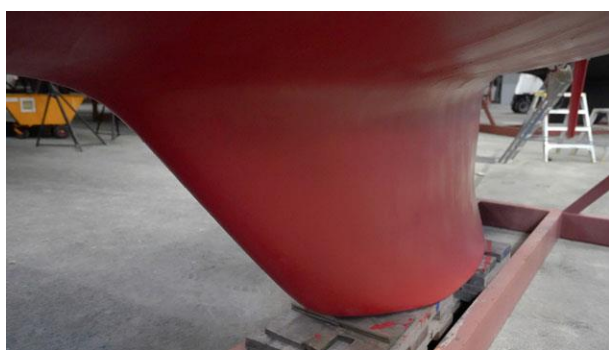
These particulars have been prepared from information provided by the vendors and are intended as a general guide to the yacht, their accuracy cannot be guaranteed by us. The purchaser should confirm details of concern to them by survey or engineer's inspection. The purchaser should also ensure that the purchase contract properly reflects their concerns and specifies details on which they may wish to rely.

**Disclaimer**

These particulars have been prepared from information provided by the vendors and are intended as a general guide to the yacht, their accuracy cannot be guaranteed by us. The purchaser should confirm details of concern to them by survey or engineer's inspection. The purchaser should also ensure that the purchase contract properly reflects their concerns and specifies details on which they may wish to rely.

**Disclaimer**

These particulars have been prepared from information provided by the vendors and are intended as a general guide to the yacht, their accuracy cannot be guaranteed by us. The purchaser should confirm details of concern to them by survey or engineer's inspection. The purchaser should also ensure that the purchase contract properly reflects their concerns and specifies details on which they may wish to rely.

**Disclaimer**

These particulars have been prepared from information provided by the vendors and are intended as a general guide to the yacht, their accuracy cannot be guaranteed by us. The purchaser should confirm details of concern to them by survey or engineer's inspection. The purchaser should also ensure that the purchase contract properly reflects their concerns and specifies details on which they may wish to rely.

**Disclaimer**

These particulars have been prepared from information provided by the vendors and are intended as a general guide to the yacht, their accuracy cannot be guaranteed by us. The purchaser should confirm details of concern to them by survey or engineer's inspection. The purchaser should also ensure that the purchase contract properly reflects their concerns and specifies details on which they may wish to rely.

**Disclaimer**

These particulars have been prepared from information provided by the vendors and are intended as a general guide to the yacht, their accuracy cannot be guaranteed by us. The purchaser should confirm details of concern to them by survey or engineer's inspection. The purchaser should also ensure that the purchase contract properly reflects their concerns and specifies details on which they may wish to rely.

BERTHON
synonymous with yachting since 1877