



MY ALBA

LOA:	50'2" / 15.3m
Year:	2018
LWL:	46'2" / 14.08m
Beam:	15'1" / 4.59m
Draft:	6'11" / 2.1m
Displacement:	18,900kg / 41,667lb
Hull Material:	GRP
Engines:	1 x Yanmar 6BY3-160, 160hp
Designer:	Judel/Vrolijk & Co / Najad AB
Accommodation:	6 berths in 3 cabins
Builder:	Najadvarvet AB
Location:	Henån, Sweden
Price:	€915,000 + VAT

BERTHON

INTERNATIONAL YACHT BROKERS

Ångsvägen 16, 473 33 Henån

T: +46 304 694 000

E: brokers@berthonscandinavia.se

W: www.berthonscandinavia.com

Disclaimer

These particulars have been prepared from information provided by the vendors and are intended as a general guide to the yacht, their accuracy cannot be guaranteed by us. The purchaser should confirm details of concern to them by survey or engineer's inspection. The purchaser should also ensure that the purchase contract properly reflects their concerns and specifies details on which they may wish to rely.

Brokers Comments:

The N505 CC is a modern, comfortable a cruiser offering amazing sailing characteristics. The robust construction and design make her a safe and stable yacht in any conditions, which is of course in line with what you would expect from a modern Najad.

The hull is designed for excellent seaworthiness, both under sail and under engine, which is a contributing factor to high comfort during long-distance sailing. These features, together with the fact that the yacht can be easily handled by a small crew, provide safety, freedom and flexibility, both when sailing on the open seas or sailing close to the coast.

The deck layout offers clean open deck areas with flush mounted skylights and deck hatches. When the Najad 505 was designed, one of the basic tasks was to create a (very) large center cockpit with good space for 6 people and to maintain all the advantages that a center cockpit offers. From the centrally located steering position, the helmsman has all equipment for sail handling and navigation close at hand, which means that the yacht is easily sailed by just one person.

The spacious aft deck, together with the wide integrated bathing platform offers a large area for swimming and water sports.

Najad 505, MY ALBA offers a 3-cabin layout. In the stern there is an owner's cabin with a centrally located double berth an en suite bathroom. In front of the mast bulkhead there are two guest cabins, one with bunk beds and the other with a V-berth, as well as another bathroom. The saloon has an L-shaped sofa and two comfortable armchairs with folding leg rests. The longitudinal galley as well as the navigation area are located directly by the entrance stairs. MY ALBA is the last built Najad 505 and was delivered to her current owner in 2018. The yachts very well equipped and was originally specified for sailing on the high seas as well as inshore. The shallow keel (2.1 m) makes it possible to enter shallow waters.

MY ALBA has been used sparingly and is in almost new condition. She has spent all winters in a heated and dehumidified hall and has (due to Corona) only been in the water for 3 summer seasons.

Key Facts:

- Electric in-mast furling.
- Electric furler for genoa and jib.
- 6 x Electric winches.
- Hydraulic boomvang and aft stay tensioners.
- Mainsail, Genoa and jib in X-Drive Carbon (UK).
- Code 0.
- Gennaker.
- Storm jib.
- Trysail.
- 2 x Whisker poles in carbon fiber.
- Electric windlass fore and aft.
- Yanmar 160 hp.
- Bow and stern thruster with docking function.
- Gori propeller.
- 2 x Air conditioning units.
- Watermaker.
- Washing machine.
- Generator 6 kW.
- Targa arch on aft deck.

Disclaimer

These particulars have been prepared from information provided by the vendors and are intended as a general guide to the yacht, their accuracy cannot be guaranteed by us. The purchaser should confirm details of concern to them by survey or engineer's inspection. The purchaser should also ensure that the purchase contract properly reflects their concerns and specifies details on which they may wish to rely.

- 2 x Solar panels.
- Wind generator.
- Hydrogen generator.
- Complete navigation system (Raymarine).
- Satellite phone.

Construction:

RCD Status: The yacht conforms with the essential safety requirements of Directive 94/25EC or RCDII (2013/53/EU as appropriate (Recreational Craft Directive) and is categorised A – “Ocean”

Hull, Deck & Superstructure Construction:

- White hull with red trim lines.
- Hull in sandwich construction including multi-axial E-glass maths, vinylester resin and divynycell core material.
- Deck in sandwich construction including multi-axial E-glass maths, vinylester and iso polyester resin and divynycell core material.
- The hull and deck are reinforced in exposed areas.
- The main bulkheads are laminated to the hull and deck.
- Solid teak on deck, in cockpit and at swim platform.
- Solid teak on deck, coach roof, swim platform and in cockpit area.
- Teak capping fitted with stainless steel rail on the outside for best possible protection.

Keel & Rudder:

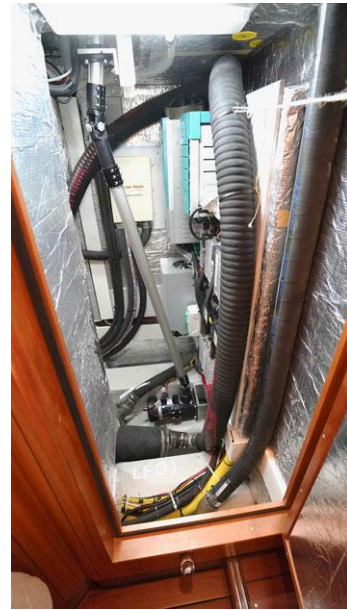
- Cast iron keel with lead bulb.
- Draft 2.1m (shallow draft).
- Acid resistant stainless-steel bolts cast in the lead keel.
- Spade rudder with 2 x bearings including lower spheric bearing.

Machinery:**Engine & Gearboxes:**

- Yanmar 6BY3-160 KMH50A.
- Shaft coupling (Aqua drive).
- 2 x Fuel pre filters.

**Disclaimer**

These particulars have been prepared from information provided by the vendors and are intended as a general guide to the yacht, their accuracy cannot be guaranteed by us. The purchaser should confirm details of concern to them by survey or engineer's inspection. The purchaser should also ensure that the purchase contract properly reflects their concerns and specifies details on which they may wish to rely.



Propulsion & Steering:

- Folding propeller (Flexofold).
- Bow and Stern thruster, retractable, progressive power and docking function.

Electrical Systems:

Voltage Systems:

- 220 V shore power system, 220 V outlets in all cabins, ground fault circuit breakers, fuse box and shore cable.
- Isolations-transformer.
- DC monitoring display (Mastervolt).
- 12 V equipment runs from service batteries via a DC/DC transformer (24 V / 12 V).
- Electrical system is mainly connected to a Empir bus system which controls the majority of the functions.

Battery Banks:

- Service batteries 24 V / 900 Ah (Mastervolt Lithium 5 x 180 Ah)
- Start battery 12 V / 100 Ah (AGM)

Battery Chargers:

- Combi charger / inverter 24V / 100A / 3500 W (Mastervolt ULTRA).
- Battery charger 24 V / 30 A (Mastervolt charge master).

Alternators:

- Engine alternator 24 V.
- Engine alternator 12 V.

Generator:

- Generator, variable speed, approx. 6 kW, 230V, 50Hz (Fisher Panda 10.000 I).
- Exhaust separator for generator.

Disclaimer

These particulars have been prepared from information provided by the vendors and are intended as a general guide to the yacht, their accuracy cannot be guaranteed by us. The purchaser should confirm details of concern to them by survey or engineer's inspection. The purchaser should also ensure that the purchase contract properly reflects their concerns and specifies details on which they may wish to rely.



Plumbing Systems:

Fresh Water & Water Heating System:

- Fresh water pump.
- Hot water boiler approx. 40 litres.

Watermaker:

- Watermaker approx. 60l/h (Spectra).

Bilge Pumps:

- Electric emergency pump.
- Electric auto/man bilge pump.
- Manual bilge pump.

Grey & Black Water:

- 2 x Shower waste pump.

Disclaimer

These particulars have been prepared from information provided by the vendors and are intended as a general guide to the yacht, their accuracy cannot be guaranteed by us. The purchaser should confirm details of concern to them by survey or engineer's inspection. The purchaser should also ensure that the purchase contract properly reflects their concerns and specifies details on which they may wish to rely.

Tankage:*Gas:*

- 2 x 2 kg gas bottle.

Fuel:

- Total fuel capacity of approx. 800 litres (stainless steel tanks).
- Fuel transfer pump.
- Electric oil change pump.

Fresh Water:

- Total fresh water capacity of approx. 1,100 litres (stainless steel tanks).

Grey/Blackwater holding tanks:

- Holding tanks approx. 2 x 70 litre (stainless steel tanks), deck and sea evacuation.

Navigation & Communication Equipment:

- Compass, with light.
- 4 x Instruments (Raymarine i70).
- Autopilot (Raymarine p70).
- Remote control for autopilot.
- Plotter / Radar display (Raymarine E165 15,4" HybridTouch).
- Plotter / Radar display (Raymarine E125 12" HybridTouch) with EU charts.
- Plotter / Radar display (Raymarine E95 9" HybridTouch).
- Radar antenna (Raymarine Quantum, 4KW Colour HD).
- AIS 500 (transceiver).
- VHF (RAY 260e DSC).
- VHF (Ray 260e Second Station Kit).
- Navtex (Furuno NX-300).

Computer & Communication Systems:

- Satellite phone (Iridium).
- WiFi Router.
- VHF (RAY 260e DSC).
- VHF (Ray 260e Second Station Kit).

Domestic Equipment:*Galley:*

- Gas stove, 3 burners with oven.
- Fan above cooker in galley.
- Remote controlled shut off gas valve.
- Microwave.
- Fridge with front opening door approx. 115 L.
- Freezer with front opening door approx. 60 L.
- Washing machine.

Heads/Showers:

- 2 x Electrical toilets.

Disclaimer

These particulars have been prepared from information provided by the vendors and are intended as a general guide to the yacht, their accuracy cannot be guaranteed by us. The purchaser should confirm details of concern to them by survey or engineer's inspection. The purchaser should also ensure that the purchase contract properly reflects their concerns and specifies details on which they may wish to rely.

Heating & Ventilation:

- 2 x Diesel heaters (Eberspracher 5 kW + 4 kW) outlets in all cabins and heads.
- Air Condition system, 2 units, forward and aft.
- Fans in all cabins.

Entertainment:

- Radio/CD/DVD with Bluetooth (Fusion).
- Speakers in saloon and cockpit.
- TV 32".
- Satellite TV antenna (Glomex).

Lighting:

- Ceiling and reading lights LED.

Accommodation:**Summary of Accommodation:**

- 6 berths in 3 cabins.
- Galley, 2 x heads / shower, saloon and navigation area.
- Handmade interior of selected African mahogany.
- Floorboards in varnished dark wood with inlaid stripes.
- Inspection hatches in floorboards.
- Headlining of creme white covered panels.
- Plenty of storage space in shelves, cabinets and closets.
- Good natural ventilation.
- SKY sol blinds for portlights in the saloon.
- Sky screens at all skylights.
- Topping mattresses in forward and aft cabin.
- ALCANTARA fabric for cushions in saloon.

Internal Layout:**Description of layout from forwards:****Forward Cabin:**

- Forward cabin with v-berth and a wardrobe on the starboard side with spacious cupboards underneath.
- There is a large stowage facility underneath the berth.
- An opening skylight can be used as an emergency exit or for ventilation purposes.

Disclaimer

These particulars have been prepared from information provided by the vendors and are intended as a general guide to the yacht, their accuracy cannot be guaranteed by us. The purchaser should confirm details of concern to them by survey or engineer's inspection. The purchaser should also ensure that the purchase contract properly reflects their concerns and specifies details on which they may wish to rely.



Forward Port Cabin:

- Forward port cabin with 2 x bunk berth.
- There is a large stowage facility underneath the berth.

Disclaimer

These particulars have been prepared from information provided by the vendors and are intended as a general guide to the yacht, their accuracy cannot be guaranteed by us. The purchaser should confirm details of concern to them by survey or engineer's inspection. The purchaser should also ensure that the purchase contract properly reflects their concerns and specifies details on which they may wish to rely.

- An opening portlight for ventilation purposes.



Forward Heads / Shower:

- Light and spacious.
- Built with white laminated bulkheads including wash basin, bench surface and shower floor made of Corian material.
- Separate shower compartment with teak seat and glass doors.
- Electrical toilet.
- Mirror.
- Cupboard.



Disclaimer

These particulars have been prepared from information provided by the vendors and are intended as a general guide to the yacht, their accuracy cannot be guaranteed by us. The purchaser should confirm details of concern to them by survey or engineer's inspection. The purchaser should also ensure that the purchase contract properly reflects their concerns and specifies details on which they may wish to rely.

**Saloon:**

- Exclusive entrance stairs with shaped footsteps and stainless steel handrail covered with leather.
- A foldable table with a locker for bottles.
- Sofas to PT and 2 x chairs to SB.
- A removable seat.
- Plenty of cabinets and book shelves.

**Disclaimer**

These particulars have been prepared from information provided by the vendors and are intended as a general guide to the yacht, their accuracy cannot be guaranteed by us. The purchaser should confirm details of concern to them by survey or engineer's inspection. The purchaser should also ensure that the purchase contract properly reflects their concerns and specifies details on which they may wish to rely.



Navigation Area:

- Navigations area to starboard of the entrance stairs.
- Large navigation table.
- Drawers.
- Comfortable seat.
- Space for instruments.



Galley:

- The galley is located to PT of the entrance stair, extending aft wards.
- Plenty of storage spaces, cupboards, drawers, dry storage and shelves.
- Corian worktop with twin sinks and a chopping board over one sink.

Disclaimer

These particulars have been prepared from information provided by the vendors and are intended as a general guide to the yacht, their accuracy cannot be guaranteed by us. The purchaser should confirm details of concern to them by survey or engineer's inspection. The purchaser should also ensure that the purchase contract properly reflects their concerns and specifies details on which they may wish to rely.



Aft Cabin (Owner's Cabin):

- A passageway on port leads to the aft cabin, which includes a wide double berth amidships and sufficient stowage for extended periods at sea.
- Seats on each side of the berth.
- Spot lights and reading lights positioned for comfortable reading.

Disclaimer

These particulars have been prepared from information provided by the vendors and are intended as a general guide to the yacht, their accuracy cannot be guaranteed by us. The purchaser should confirm details of concern to them by survey or engineer's inspection. The purchaser should also ensure that the purchase contract properly reflects their concerns and specifies details on which they may wish to rely.

- The bed base is unvarnished and ventilated with holes to minimize dampness.
- Two fixed portholes in the hull and two openable skylights for ventilation.
- Heads/shower is located to starboard with entrance from the aft cabin.



Disclaimer

These particulars have been prepared from information provided by the vendors and are intended as a general guide to the yacht, their accuracy cannot be guaranteed by us. The purchaser should confirm details of concern to them by survey or engineer's inspection. The purchaser should also ensure that the purchase contract properly reflects their concerns and specifies details on which they may wish to rely.



Aft Heads / Shower:

- Light and spacious.
- Built with white laminated bulkheads including wash basin, bench surface and shower floor made of Corian material.
- Separate shower compartment with glass doors.
- Electrical toilet.
- Mirror.
- Cupboards.



Cockpit:

- High gloss varnished entrance.
- Varnished cockpit table.
- Stainless steel grab rail at the pedestal.
- Cockpit locker.

Disclaimer

These particulars have been prepared from information provided by the vendors and are intended as a general guide to the yacht, their accuracy cannot be guaranteed by us. The purchaser should confirm details of concern to them by survey or engineer's inspection. The purchaser should also ensure that the purchase contract properly reflects their concerns and specifies details on which they may wish to rely.



Deck Equipment:

Rig:

- Electric In-mast Furling.
- Electric Furlex for Genua and inner fore sail.
- Hydraulic boom vang and aft stay, maneuvered from cockpit.
- Aluminum rigging screw protection.
- Deck lights in front of mast.
- Light under boom in cockpit.
- Steaming and anchor lights.
- Flag halyards.
- Windex.

Winches:

- 4 x Electric primary winches (Andersen 68 STE Vario).
- 2 x Electric secondary winch (Andersen 46 STE).
- 2 x Additional winches (Andersen 46 ST).
- 2 x Halyard winches (Andersen 46 ST).

Disclaimer

These particulars have been prepared from information provided by the vendors and are intended as a general guide to the yacht, their accuracy cannot be guaranteed by us. The purchaser should confirm details of concern to them by survey or engineer's inspection. The purchaser should also ensure that the purchase contract properly reflects their concerns and specifies details on which they may wish to rely.

Sails:

- Furling main sail, X-Drive Carbon, double grey Taffeta (UK).
- Furling working jib, X-Drive Carbon, double grey Taffeta (UK).
- Furling Genoa, X-Drive Carbon, double grey Taffeta (UK).
- Code 0 including Selden CX Furler and Halyard.
- Gennaker.
- Storm jib.
- Trysail.

General:

- Stainless steel arc on aft deck.
- Davits.
- Outboard crane.
- Gangway.
- Pushpit teak fitting for outboard.
- Stainless steel pushpit with integrated (G&T) teak seats.
- Flag pole.
- Shower at swim platform.
- Swim/safety ladder.

Skylights, Portlights, Windows:

- Skylights flush mounted.
- Portlights in coach roof, openable in forward heads and forward PT cabin.
- 6 x Fixed portlights in hull.
- 4 x Deck ventilators, low type, stainless steel.
- Fixed Windscreen (stainless steel frame).
- 2 x integrated grab rails (stainless steel) at the windscreen.
- Ventilation louvers in the companionway hatch.

Anchoring & Mooring Equipment:

- Bow - Electric windlass (Lofrans project 1500), stainless steel anchor 30 kg, 80 m stainless steel chain.
- Stern - Electric windlass (Lofrans project 1500), CQR stainless steel 25 kg, 40 m stainless steel chain.
- 4 x Cleats stainless steel.
- 4 x Spring cleats stainless steel.
- 6 x Mooring lines.
- 6 x Fenders.
- Stainless steel protection rails at the cleats and gateways.
- Lifelines gates.

Covers, Canvas & Cushions:

- Sprayhood and Sprayhood extension, graphite grey.
- Bimini with stainless steel frame, graphite grey.
- Steering wheel, stainless steel, hide covered.
- Canvas cover for table and winches.
- Cockpit cushions, graphite grey.

Tender & Outboard:

- Dingy.
- Outboard (gasoline).
- Outboard (electric).

Disclaimer

These particulars have been prepared from information provided by the vendors and are intended as a general guide to the yacht, their accuracy cannot be guaranteed by us. The purchaser should confirm details of concern to them by survey or engineer's inspection. The purchaser should also ensure that the purchase contract properly reflects their concerns and specifies details on which they may wish to rely.

Safety Equipment:

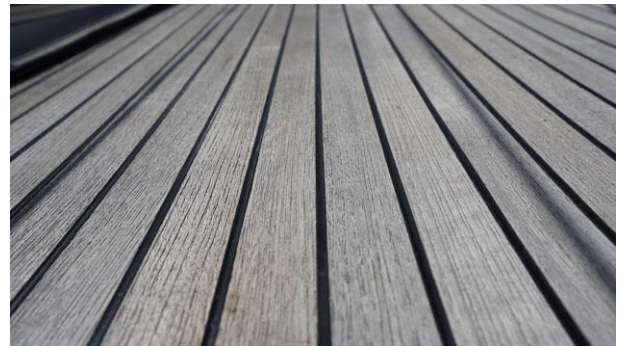
- Life raft 6 persons – service needed.

Fire-Fighting Equipment:

- 3 x Fire extinguishers (whereof one is dedicated for Lithium fire).

**Disclaimer**

These particulars have been prepared from information provided by the vendors and are intended as a general guide to the yacht, their accuracy cannot be guaranteed by us. The purchaser should confirm details of concern to them by survey or engineer's inspection. The purchaser should also ensure that the purchase contract properly reflects their concerns and specifies details on which they may wish to rely.

**Disclaimer**

These particulars have been prepared from information provided by the vendors and are intended as a general guide to the yacht, their accuracy cannot be guaranteed by us. The purchaser should confirm details of concern to them by survey or engineer's inspection. The purchaser should also ensure that the purchase contract properly reflects their concerns and specifies details on which they may wish to rely.

**Disclaimer**

These particulars have been prepared from information provided by the vendors and are intended as a general guide to the yacht, their accuracy cannot be guaranteed by us. The purchaser should confirm details of concern to them by survey or engineer's inspection. The purchaser should also ensure that the purchase contract properly reflects their concerns and specifies details on which they may wish to rely.

BERTHON

synonymous with yachting since 1877