



VENTURE

LOA:	44'4" / 13.5m
Year:	2008
LWL:	39'8" / 12.1m
Beam:	13'3" / 4.03m
Draft:	6'11" / 2.10m
Displacement:	14,000kg / 26,455lb
Hull Material:	GRP
Engines:	1 x Volvo D2-75hp
Designer:	Najad AB & Judel/Vroljik
Accommodation:	4 berths in 2 cabins
Builder:	Najad AB, Sweden
Location:	Henån, Sweden
Price:	€360,000 VAT paid EU

BERTHON

INTERNATIONAL YACHT BROKERS

Ängsvägen 16, 473 33 Henån

T: +46 304 694 000

E: brokers@berthonscandinavia.se

W: www.berthonscandinavia.com

Disclaimer

These particulars have been prepared from information provided by the vendors and are intended as a general guide to the yacht, their accuracy cannot be guaranteed by us. The purchaser should confirm details of concern to them by survey or engineer's inspection. The purchaser should also ensure that the purchase contract properly reflects their concerns and specifies details on which they may wish to rely.

Broker's Comments:

The aim of the successful design of the Najad 440 CC was to create a luxury, highly exclusive and superb sailing yacht, capable of being handled in safety by a crew of two persons.

The outcome from the combination of naval architect Judel/Vrolijk & Co, interior designer Rhodes Young and Najadvarvets craftsmen, was a ground breaking, exceptional 'world class' yacht. The Najad 440 is equally suited to ocean adventure, as to the gentler life of coastal cruising and island hopping.

The Najad 440 comes in two different versions, AC (aft cockpit) and CC (center cockpit). This Najad 440 VENTURE is an CC version that was delivered in 2008. This means it offers a well-protected cockpit ideal for ocean sailing where all sail handling and instruments are always close to you. The fixed windscreen and sprayhood offer good protection also in cold climate sailing conditions.

The interior layout offers a large owner's aft cabin with double berths and en suite toilet with shower. The forward guest cabin also offers a double berth, en suite toilet with shower and plenty of storage space. A large longitude galley is located to port of the entrance extending aft wards and the navigation table with a comfortable seat is located directly to starboard of the entrance. The saloon has a L-sofa to port and two chairs to starboard. A superb layout for an ocean-going yacht!

The interior is made of selected mahogany with floorboards in Jatoba and light coloured upholstery.

Najad 440 VENTURE has been used for family sailing in Scandinavian, mainly Swedish waters. It is in good condition for its age, well equipped and continuously updated. It has always been professionally serviced and kept inside during winter times - at Orust Yacht Service.

Key Facts:

- Electric in mast furling.
- Electric furling for genoa.
- Electric genoa winches.
- Running rigging - 2019.
- Sprayhood and Bimini - 2020.
- Electric windlass for bow and stern anchor.
- Plotter - 2016.
- Radar - 2016.
- Autopilot.
- AIS.
- Stereo with sound system.
- Washing machine.
- Fridge and freezer.
- Electric toilets.
- Service batteries AGM 24V / 360 Ah - 2018.
- Volvo D2-75.
- Bow thruster.
- Professionally maintained.
- Always stored inside during winter.

Disclaimer

These particulars have been prepared from information provided by the vendors and are intended as a general guide to the yacht, their accuracy cannot be guaranteed by us. The purchaser should confirm details of concern to them by survey or engineer's inspection. The purchaser should also ensure that the purchase contract properly reflects their concerns and specifies details on which they may wish to rely.

Construction:

RCD Status: The yacht conforms with the essential safety requirements of Directive 94/25EC or RCDII (2013/53/EU as appropriate (Recreational Craft Directive) and is categorized A – “Ocean”

Hull, Deck & Superstructure Construction:

- White hull with red trim lines.
- Hull in sandwich construction with divynycell core material. The surface layer is gelcoat.
- Deck in sandwich construction with divynycell core material. The surface layer is gelcoat.
- The hull and deck are reinforced in exposed areas.
- The main bulkheads are laminated to the hull and deck.
- Teak on deck, coach roof, cockpit and swim platform.
- Teak capping with stainless steel protection rail.

Keel & Rudder:

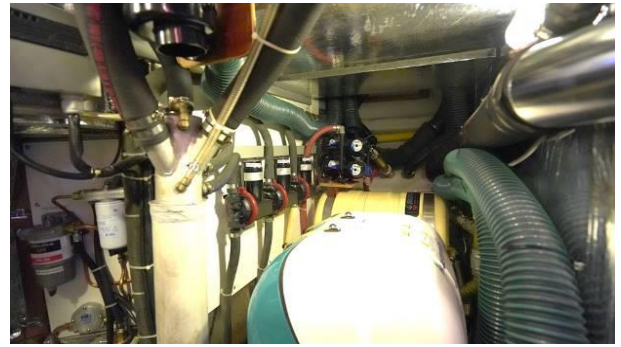
- Cast iron keel with lead bulb.
- Acid resistant stainless-steel bolts.
- Spade rudder with 2 x bearings including lower spheric bearing.

Machinery:**Engine & Gearboxes:**

- Volvo D2-75S, 75hp, approx. 785 hrs (June 2022).
- Sound insulated engine room.
- Fuel pre filter.
- Sail drive.
- Sail drive seal - 2022

**Disclaimer**

These particulars have been prepared from information provided by the vendors and are intended as a general guide to the yacht, their accuracy cannot be guaranteed by us. The purchaser should confirm details of concern to them by survey or engineer's inspection. The purchaser should also ensure that the purchase contract properly reflects their concerns and specifies details on which they may wish to rely.

***Propulsion & Steering:***

- Bow thruster (Sleipner SP 125 T).
- 3-bladed folding propeller.
- Rope stripper - 2019.
- Exhaust pipe - 2019.

Electrical Systems:***Battery Banks:***

- Domestic batteries, AGM, 24 V / 360 Ah - 2018.
- Engine battery 12V / 75 Ah.

Battery Chargers:

- Inverter / battery charger, 220V / 2kW / 60A (Mastervolt).

Alternators:

- Alternator 24V / 80A.
- Alternator 12V / 60A.

Generator:

- Generator (Mastervolt) 220V / 3,5kW approx. 59 hrs (June 2023).

Shore Power:

- 220 V shore power system, 220 V outlets in all cabins, ground fault circuit breakers, fuse box and shore cable.
- Shore power system, 220V, 4 x outlets, 20 m shore cable.

Plumbing Systems:

- Deck wash pump, fresh water - 2016.
- Fresh water pump.

Fresh Water & Water Heating System:

- Hot water boiler 40 L (Isotherm).

Bilge Pumps:

- Manual bilge pump.
- Electrical bilge pump, auto/man.
- Electrical bilge pump, high capacity (Rule).

Disclaimer

These particulars have been prepared from information provided by the vendors and are intended as a general guide to the yacht, their accuracy cannot be guaranteed by us. The purchaser should confirm details of concern to them by survey or engineer's inspection. The purchaser should also ensure that the purchase contract properly reflects their concerns and specifies details on which they may wish to rely.

Tankage:

- 2 x Gas bottles.

Fuel:

- Fuel approx. 600 L (stainless steel tanks).

Fresh water:

- Water approx. 522 L (stainless steel tanks).

Grey/Blackwater holding tanks:

- 2 x Holding tanks approx. 60 L/tank (stainless steel tanks) deck and sea evacuation.

Navigation Equipment:

- Compass, illuminated.
- 3 x Sailing data instruments (Raymarine ST 70).
- Plotter (Raymarine Hybrid Touch) - 2016.
- Radar (Raymarine) - 2016.
- Passive radar reflector on the mast.
- Autopilot with mamba drive, course computer and gyro (Raymarine ST 6002 plus).
- Autopilot wireless remote control.
- AIS (Raymarine 250).

Communication, Computer and Weather systems:

- VHF (Ray 240 E).
- VHF speaker.
- Loudhailer.
- Antenna for VHF, TV and FM (RR Antigua).
- Ethernet connection for computer/nav. system data input.

Domestic Equipment:

- Washing machine (Candy) – 2014.

Galley:

- Gas stove, 2-burners with oven (Force 10).
- Gas valve remote control.
- Fridge box 92 L.
- Freezer box, approx. 40 L, water cooled, located under sofa in saloon (Isotherm) – 2019.
- Microwave.
- Single lever freshwater mixer.
- Fresh water filter.

Heads/Shower:

- 2 x Electric toilets (Dometic), fresh water flush - 2016.
- Aft deck shower.

Heating & Ventilation:

- Diesel heater (Eberspracher) outlets in all cabins and heads.
- 3 x Electrical outlets for fans.

Disclaimer

These particulars have been prepared from information provided by the vendors and are intended as a general guide to the yacht, their accuracy cannot be guaranteed by us. The purchaser should confirm details of concern to them by survey or engineer's inspection. The purchaser should also ensure that the purchase contract properly reflects their concerns and specifies details on which they may wish to rely.

- Fixed cockpit windscreen.
- 5 x Skylights.
- 11 x Portlights (opening type in galley, heads, forward- and aft cabin).
- 6 x Dorade type ventilators with stainless steel protection bars.
- Ventilation louvers in the companionway hatch.
- Heater outlet in the cockpit.

Entertainment:

- Stereo (Fusion) - 2016.
- BOSE Acustimass 5 sound system with subwoofer and speakers.
- TV in the saloon (B&O).
- 2 x Stereo loudspeakers in the cockpit.

Lighting:

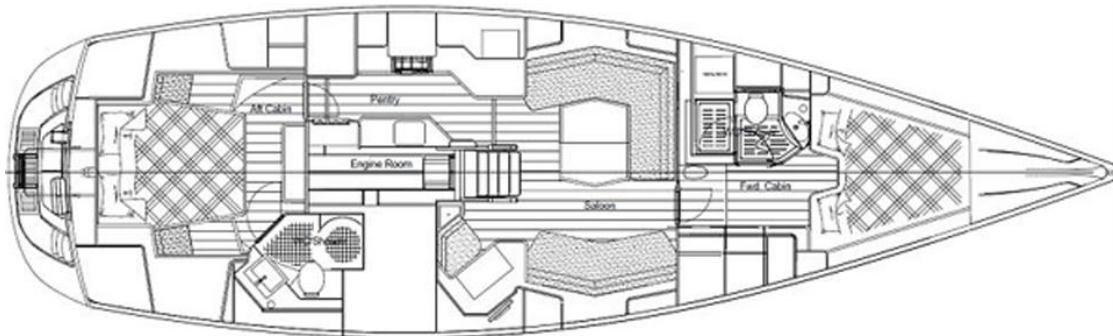
- Ceiling lights with dimmers.
- 2 x Bulkhead lamps in saloon (Cantalupi Zeus).
- Red colour night lights throughout the boat.
- Steaming and anchor lights.
- Deck light.
- Tri-color and anchor light.

Accommodation:

Summary of Accommodation:

- Sleep 4 persons in 2 cabins.
- Handmade interior of selected African mahogany.
- Floorboards in varnished dark wood with inlaid stripes.
- Inspection hatches in floorboards.
- Headlining of creme white covered panels.
- Plenty of storage space in shelves, cabinets and closets.
- Good ventilation.
- Alcantara upholstery in saloon.
- Upholstery covers - 2015.
- Comfortable topping mattress in aft and forward cabin.
- Skyscreens.
- Ship's clock and barometer.
- Safe.

Internal Layout:



Note: To starboard in the saloon, VENTURE has two comfortable chairs instead of a sofa.

Disclaimer

These particulars have been prepared from information provided by the vendors and are intended as a general guide to the yacht, their accuracy cannot be guaranteed by us. The purchaser should confirm details of concern to them by survey or engineer's inspection. The purchaser should also ensure that the purchase contract properly reflects their concerns and specifies details on which they may wish to rely.

*Description of layout from forwards:**Forward Cabin:*

- Forward cabin with enclosed heads/shower.
- Double berth.
- Wardrobe, cupboards and shelves.

**Disclaimer**

These particulars have been prepared from information provided by the vendors and are intended as a general guide to the yacht, their accuracy cannot be guaranteed by us. The purchaser should confirm details of concern to them by survey or engineer's inspection. The purchaser should also ensure that the purchase contract properly reflects their concerns and specifies details on which they may wish to rely.



Forward Heads/Shower:

- Light and spacious heads/shower compartment.
- Corian bench top and floor board.
- Cupboards for storage.



Disclaimer

These particulars have been prepared from information provided by the vendors and are intended as a general guide to the yacht, their accuracy cannot be guaranteed by us. The purchaser should confirm details of concern to them by survey or engineer's inspection. The purchaser should also ensure that the purchase contract properly reflects their concerns and specifies details on which they may wish to rely.



Saloon:

- Exclusive entrance stair with shaped footsteps and stainless steel handrail covered with black leather.
- L-shaped sofa to port.
- 2 x Seats to starboard.
- Foldable dinner / coffee table.
- Plenty of cupboards and storage.



Disclaimer

These particulars have been prepared from information provided by the vendors and are intended as a general guide to the yacht, their accuracy cannot be guaranteed by us. The purchaser should confirm details of concern to them by survey or engineer's inspection. The purchaser should also ensure that the purchase contract properly reflects their concerns and specifies details on which they may wish to rely.

**Disclaimer**

These particulars have been prepared from information provided by the vendors and are intended as a general guide to the yacht, their accuracy cannot be guaranteed by us. The purchaser should confirm details of concern to them by survey or engineer's inspection. The purchaser should also ensure that the purchase contract properly reflects their concerns and specifies details on which they may wish to rely.



Navigation Area:

- Navigation area to starboard of the entrance.
- Comfortable seat.
- Navigation table.
- Drawers.



Disclaimer

These particulars have been prepared from information provided by the vendors and are intended as a general guide to the yacht, their accuracy cannot be guaranteed by us. The purchaser should confirm details of concern to them by survey or engineer's inspection. The purchaser should also ensure that the purchase contract properly reflects their concerns and specifies details on which they may wish to rely.

**Disclaimer**

These particulars have been prepared from information provided by the vendors and are intended as a general guide to the yacht, their accuracy cannot be guaranteed by us. The purchaser should confirm details of concern to them by survey or engineer's inspection. The purchaser should also ensure that the purchase contract properly reflects their concerns and specifies details on which they may wish to rely.

Galley:

- The galley is located to port of the entrance stair, extending aft wards.
- Plenty of storage spaces, cupboards, drawers, dry storage.
- Corian worktop (off white, Savannah).
- Corian fiddle around the sink – 2016.

**Disclaimer**

These particulars have been prepared from information provided by the vendors and are intended as a general guide to the yacht, their accuracy cannot be guaranteed by us. The purchaser should confirm details of concern to them by survey or engineer's inspection. The purchaser should also ensure that the purchase contract properly reflects their concerns and specifies details on which they may wish to rely.



Aft Cabin:

- Spacious aft cabin with enclosed heads/shower.
- Double berth.
- Seat.
- Wardrobe, cupboards and drawers.



Disclaimer

These particulars have been prepared from information provided by the vendors and are intended as a general guide to the yacht, their accuracy cannot be guaranteed by us. The purchaser should confirm details of concern to them by survey or engineer's inspection. The purchaser should also ensure that the purchase contract properly reflects their concerns and specifies details on which they may wish to rely.



Aft Heads / Shower:

- Light and spacious heads/shower compartment.
- Corian bench top and floorboard.
- Cupboards for storage.



Disclaimer

These particulars have been prepared from information provided by the vendors and are intended as a general guide to the yacht, their accuracy cannot be guaranteed by us. The purchaser should confirm details of concern to them by survey or engineer's inspection. The purchaser should also ensure that the purchase contract properly reflects their concerns and specifies details on which they may wish to rely.

Cockpit:

- High gloss varnished entrance and chart table with integrated teak grab rails.
- High gloss varnished cockpit table.
- Teak glass holder at the pedestal (varnished).
- Steering wheel, stainless steel, covered with elk skin.
- Removable raised floor behind the steering wheel - 2017.
- Stainless steel grab rail at the pedestal.
- Cockpit locker.

Deck Equipment:*Rig:*

- Electrical in mast furling manoeuvred from cockpit.
- Electric mast furling motor - 2021.
- Electrical Furlex for genoa (electrical motor installation 2013).
- Back stay adjuster, hydraulic (Holmatro).
- Rodkick with gas damper (Seldén).
- Running rigging - 2019.
- Aluminium rigging screw protection.
- Deck lights in front of mast.
- Aluminium rigging screw protection.
- Windex - 2019.
- 2 x Flag halyard.
- Hooks on spreaders for halyards - 2016.
- Deck gear (Lewmar).
- Line clutches (Spinlock).
- Gennaker equipment (halyard, sheets, down haul).

Winches:

- 2 x Electrical genoa winch, stainless steel (Andersen 58 STE).
- 2 x Main sheet winch, stainless steel (Andersen 40 ST).
- 2 x Halyard winch, stainless steel (Andersen 40 ST).

Sails:

- Mainsail, Hydranet (UK).
- Genoa, Hydranet (UK).
- Gennaker 130 m2 with squeezer (UK).
- Blue water runner (Elvström) - 2021.

General:

- Pushpit teak fitting for outboard engine.
- Safety/swim ladder.
- 2 x Grab rails outside of windscreen.
- Integrated seats in pushpit.

Anchoring & Mooring Equipment:

- 4 x Cleats, stainless steel.
- 2 x Spring cleats, stainless steel.
- 2 x Life line gates.

Disclaimer

These particulars have been prepared from information provided by the vendors and are intended as a general guide to the yacht, their accuracy cannot be guaranteed by us. The purchaser should confirm details of concern to them by survey or engineer's inspection. The purchaser should also ensure that the purchase contract properly reflects their concerns and specifies details on which they may wish to rely.

- 6 x Mooring lines.
- 4 x Fenders.
- 2 x Ball fenders.
- Bow ladder "Timo".
- Boat hook.
- Bow protection rail, stainless steel.
- Bow anchor.
- Electrical windlass, below deck mounted.
- Spade anchor - 2019.
- 60 m x 10 mm galvanized chain - 2019.
- Anchor safety chain - 2019.
- Stern anchor.
- Electrical windlass.
- CQR anchor.
- 40 m x 8 mm galvanized chain.
- Cleats for fenders in starboard aft locker -2020.

Covers, Canvas & Cushions:

- Sprayhood - 2020.
- Sprayhood extension with removable side panels.
- Bimini and stainless steel frame - 2020.
- Grab rail behind the sprayhood, elk skin covered.
- Cockpit cushions - 2015.

Tender & Outboard:

- Davits, retractable type (Bensenzoni).
- Inflatable dingy
- Electric outboard.

Safety Equipment:

- EPRIB Ocean Signal E100G.
- Sea anchor (unpacked) - condition unknown.
- Daytime recognition (vessel by anchor & motor sailing).
- Ankarolina.
- Foghorn.
- Jack lines in cockpit - 2017.
- Life raft (Modula 6 pers), serviced 2020.
- 2 x Life line gate ways.
- 1 x Life bouy (Secumar).

Fire-fighting equipment:

- 3 x Fire extinguisher.

Disclaimer

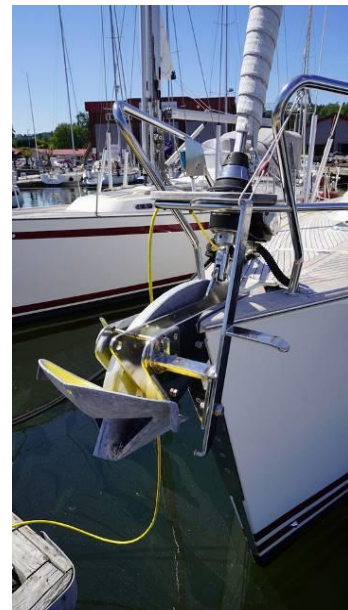
These particulars have been prepared from information provided by the vendors and are intended as a general guide to the yacht, their accuracy cannot be guaranteed by us. The purchaser should confirm details of concern to them by survey or engineer's inspection. The purchaser should also ensure that the purchase contract properly reflects their concerns and specifies details on which they may wish to rely.

**Disclaimer**

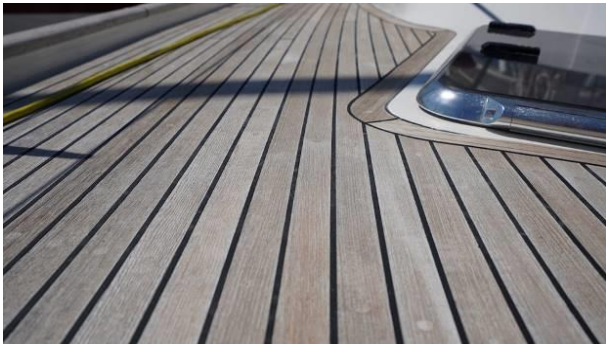
These particulars have been prepared from information provided by the vendors and are intended as a general guide to the yacht, their accuracy cannot be guaranteed by us. The purchaser should confirm details of concern to them by survey or engineer's inspection. The purchaser should also ensure that the purchase contract properly reflects their concerns and specifies details on which they may wish to rely.

**Disclaimer**

These particulars have been prepared from information provided by the vendors and are intended as a general guide to the yacht, their accuracy cannot be guaranteed by us. The purchaser should confirm details of concern to them by survey or engineer's inspection. The purchaser should also ensure that the purchase contract properly reflects their concerns and specifies details on which they may wish to rely.

**Disclaimer**

These particulars have been prepared from information provided by the vendors and are intended as a general guide to the yacht, their accuracy cannot be guaranteed by us. The purchaser should confirm details of concern to them by survey or engineer's inspection. The purchaser should also ensure that the purchase contract properly reflects their concerns and specifies details on which they may wish to rely.

**Disclaimer**

These particulars have been prepared from information provided by the vendors and are intended as a general guide to the yacht, their accuracy cannot be guaranteed by us. The purchaser should confirm details of concern to them by survey or engineer's inspection. The purchaser should also ensure that the purchase contract properly reflects their concerns and specifies details on which they may wish to rely.

**Disclaimer**

These particulars have been prepared from information provided by the vendors and are intended as a general guide to the yacht, their accuracy cannot be guaranteed by us. The purchaser should confirm details of concern to them by survey or engineer's inspection. The purchaser should also ensure that the purchase contract properly reflects their concerns and specifies details on which they may wish to rely.

**Disclaimer**

These particulars have been prepared from information provided by the vendors and are intended as a general guide to the yacht, their accuracy cannot be guaranteed by us. The purchaser should confirm details of concern to them by survey or engineer's inspection. The purchaser should also ensure that the purchase contract properly reflects their concerns and specifies details on which they may wish to rely.

BERTHON
synonymous with yachting since 1877