



SCAN TO VIEW

## Hallberg-Rassy 43 > **ERIANHE**



<b>Price</b>	<b>SEK 3,795,000 EU VAT paid</b>
<b>Location</b>	Stockholm, Svinninge Marina
<b>Year</b>	2004
<b>LOA</b>	44'6" / 13.57m
<b>LWL</b>	38'7" / 11.75m
<b>Beam</b>	13'5" / 4.08m
<b>Draft</b>	6'7" / 2m
<b>Displacement</b>	12,904kg / 28,448lb
<b>Hull Material</b>	GRP
<b>Engine</b>	1 x Volvo D2-55
<b>Builder</b>	Hallberg-Rassy
<b>Designer</b>	German Frers
<b>Accommodation</b>	6 berths in 2 cabins & saloon



## BROKER'S COMMENTS

For 16 years, between 2001 and 2016, almost 200 Hallberg-Rassy 43 hulls were delivered from the shipyard on the Swedish west coast. The Hallberg-Rassy 43 is renowned for its quality construction, making it a well-proven bluewater cruiser. Ideal for both coastal and ocean voyages, the HR43 boasts a spacious two-cabin layout. The design includes a large owner's aft cabin, a forward guest cabin, a sea-going galley and two heads each with a shower. Additionally, there's an ergonomic navigation area and a saloon with a sofa and two comfortable armchairs. Other typical Hallberg-Rassy features also includes a large, service-friendly engine room, a center cockpit with a protective windshield, generous tankage, a rubbing strake on the hull and elegantly timeless lines. In short, the Hallberg-Rassy 43 is a great yacht for both cruising and comfortable long-term liveaboard.

Hallberg-Rassy 43, ERIANHE was bought by the current (second) owner in 2006. She has been used for family sailing, mainly on the Swedish east coast. She has been stored on land, under cover, during the winter months and has been serviced regularly by a knowledgeable owner and professional service technicians. ERIANHE is in good general condition. The teak deck is original and has never been sanded.

If you are looking for an easy to sail, well equipped and well maintained Hallberg-Rassy 43, in good general condition for her age – don't miss out on ERIANHE!

Explore more photos here: <https://www.berthoninternational.com/yacht-sales-brokerage/yachts-for-sale/hallberg-rassy-43-erianhe/>

### Key Facts:

- Hydraulic in-mast furling.
- Hydraulic genoa furling.
- 3 x Electric winches.
- Hydraulic aft stay and boom vang ram, cockpit manoeuvred.
- Sprayhood - 2023
- Volvo D2-55.
- Generator (Panda 4500).
- Service batteries 660 Ah (GEL).
- Plotter (Raymarine Axiom 12) – 2021.
- Radar (Raymarine Quantum II) – 2022.
- Washing machine.

## CONSTRUCTION

*RCD Status: The yacht conforms with the essential safety requirements of Directive 94/25EC or RCDII (2013/53/EU as appropriate (Recreational Craft Directive) and is categorised A – "Ocean" (or Cat B – whichever is appropriate)*

### Hull, Deck & Superstructure Construction:

- White hull with blue trim lines.
- Integrated rubbing strake.
- Deep bilge.
- White deck and coach roof.
- Polish of hull and deck - 2023.
- Solid teak on deck, coach roof, cockpit and swim platform.

**Keel & Rudder:**

- The keel is bolted to the bilge.
- Skeg hung rudder.

**MACHINERY****Engine & Gearboxes:**

- Volvo D2-55.
- Fuel filter double (Racor).
- Shaft coupling (Centaflex).

**Maintenance & Performance:**

- Serviced annually.

**Propulsion & Steering:**

- Bow thruster, 8 hp (Sidepower).
- Propeller (Gori).
- Line cutter.
- Rod steering system (Whitlock).
- Emergency steering gear.
- Steering wheel, stainless steel, covered with elk skin.

**ELECTRICAL SYSTEMS****Battery Banks:**

- Domestic batteries GEL (Victron) 4 x 165 Ah.
- Engine battery LED 75 Ah - 2022.

**Battery Chargers:**

- 220 V / 12 V / 60 A (Mastervolt MASS).

**Alternators:**

- 12 V / 100 A.

**Generator:**

- 4,5 kW, approx. 300 hrs (Panda 4500 SCB).

**Shore Power:**

- 230 V with earth fault breaker and shore power cable.

**Other Electrical:**

- Solar panel.
- Battery control panel (Mastervolt MICC).

**PLUMBING SYSTEMS**

- Deck wash pump, sea water (Flowjet).

**Fresh Water & Water Heating System:**

- 12 V fresh water pump.
- 40 L hot water boiler (Isotherm).

#### **Bilge Pumps:**

- Manual bilge pump.
- Electrical bile pump, with level switch, auto/man.
- Electrical bilge pump, high capacity.

#### **TANKAGE**

##### **Fuel:**

- Approx. 395 L.

##### **Fresh Water:**

- Approx. 650 L.

##### **Grey/Blackwater:**

- 2 x Holding tanks, approx. 60 L each, discharge to sea by gravity or by deck discharge.
- All sinks discharge directly over board by gravity.
- Showers discharge directly over board via 12 V pumps.

#### **NAVIGATION EQUIPMENT**

- Compass (Suunto) illuminated.
- 3 x Sailing instruments, wind, speed, depth (Raymarine ST60).
- Multi instrument (Raymarine ST60).
- Plotter (Raymarine Axiom 12) – 2021.
- Plotter (Raymarine RL70C).
- Radar (Raymarine Quantum II) – 2022.
- Autopilot (Raymarine 7001G) with Whitlock drive.
- GPS instrument (Raymarine RN300).
- Navtex (Furuno NX300D).
- NMEA/RS232C interface box.

##### **Communication, computer, weather systems**

- VHF (Raymarine 260).
- 2 x VHF hand set.
- 2 x VHF speakers.
- VHF handheld (ICOM).
- Fixed computer with 15" screen, mouse and keyboard.
- Navigation software.
- Antenna (RR Pacific) for VHF, TV and FM.

#### **DOMESTIC EQUIPMENT**

##### **Galley:**

- Gas stove, 2-burners with oven (ENO), gas Solonoid (Truma) - 2017.
- Gas hoses – 2020.
- Gas leak indicator.
- Fridge (Isotherm SP).
- Fridge/Freezer (Isotherm SP).
- Microwave oven (Electrolux).
- Single lever fresh water mixer.
- Sea water tap with foot pump.

### Heads/Showers:

- 2 x Toilets, electric flush (Jabsco).
- Washing machine 230V (Kenny Euronova).
- Shower at swim platform.

### Heating & Ventilation:

- Diesel heating system, outlets in all cabins and heads (Webasto Airtop 5000).
- 4 x Skylights.
- 10 x Portlights.
- 5 x Dorade type ventilator.

### Entertainment:

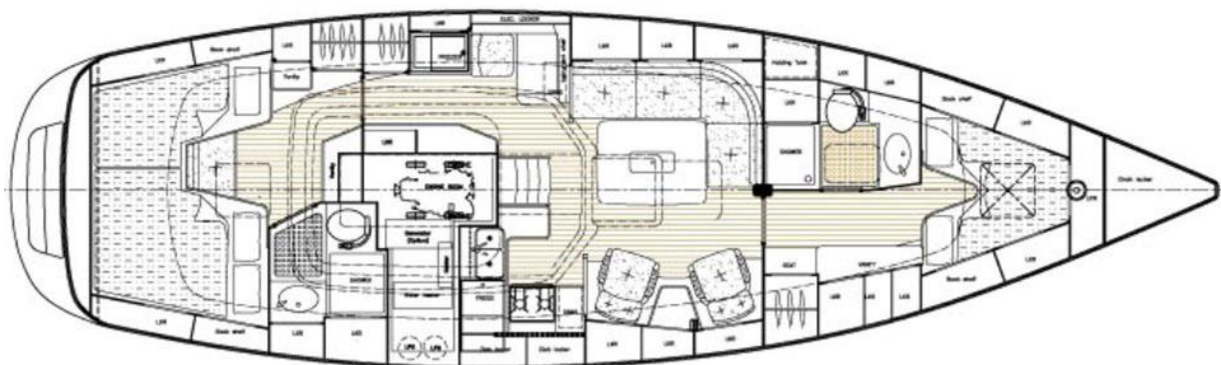
- Stereo (Pioneer).
- 2 x Speakers inside (Infinity).
- 2 x Speakers in cockpit (Sea & Symphony).

## ACCOMMODATION

### Summary of Accommodation:

- 5 berths in 2 cabins + 1 person in the saloon sofa.
- Handmade interior of mahogany.
- Inspection hatches in floorboards.
- Headlining of cream white panels, mahogany trim.
- Upholstery, blue coloured in saloon (Alcantara).
- Upholstery, blue coloured in cabins.
- Carpet, blue coloured - 2018.
- Curtains, light grey coloured.
- Skyscreen in all cabins.

### Internal Layout:



### Description of layout from forwards:

#### Forward Cabin:

- V-berth.
- Plenty of storage in lockers and wardrobes.
- En suite heads/shower.

#### Forward Heads:

- Light and spacious heads with shower.



- Plexiglas doors at the shower.

**Saloon:**

- L-sofa to port.
- 2 x Armchairs to starboard.
- Solid saloon table.
- Cupboards for storage.

**Galley:**

- Located to starboard of the entrance.
- Plenty of storage.

**Navigation Area:**

- Located to port of the entrance.
- Chart table.
- Seat.
- Drawers for storage.
- Space for instruments.

**Passage Aft:**

- Cupboards for storage.
- Entrance door to engine room.

**Aft Cabin:**

- Double berth to starboard.
- Single berth to port.
- Seat between the berth
- Plenty of storage in lockers and wardrobes.
- En suite heads / shower.

**Aft Heads:**

- Light and spacious heads with shower.
- Plexiglas doors at the shower.

**DECK EQUIPMENT**

**Rig:**

- Aluminium mast with 3 pairs of spreaders (Selden).
- Hydraulic in-mast furling (Selden).
- Hydraulic furler for genoa (Selden Furlex 400S).
- Removable cutter stay.
- 2 x Back stays.
- Hydraulic back stay adjuster, cockpit manoeuvred (Navtec).
- Hydraulic back boom vang, cockpit manoeuvred (Navtec).
- Deck light.
- Steaming light.
- Tricolor / Anchor light.
- Line clutches (Lewmar).
- Deck gear (Lewmar).

**Winches:**

- 2 x Electrical Genoa winch (Lewmar 54).

- Electrical Main sheet winch (Lewmar 40).
- Manual Main sheet winch (Lewmar 40).
- 2 x Manual halyard winch at mast (Lewmar 40).

#### **Sails:**

- Mainsail, Trioptimal 4, DC77, E-foam, with standing battens (Elvström).
- Genoa, approx. 57 m<sup>2</sup>, EMS4V, Trioptimal (Elvström).
- Genua, approx. 105% E-foam (Elvström), lightly used.
- Sail cover for Genoa.
- Cutter jib.
- Gennaker in snuffer (Elvström).
- Removable bow sprit for gennaker.

#### **General:**

- Fixed windscreen, opening mid window.
- Grab rail at the pedestal and on outside the windscreen.
- High gloss varnished entrance and chart table with teak grab rails
- High gloss varnished cockpit table.
- Cockpit locker.
- G&T seats in pushpit.
- Pushpit teak fitting for outboard engine.
- Deck mounted navigation lights.
- 2 x Lifeline gates
- Crane for outboard.
- 2 x P6 gas bottles.

#### **Anchoring & Mooring Equipment:**

##### Bow

- 25 kg anchor (Delta).
- Electrical windlass with capstan (Lewmar, Ocean).
- 60 m x 10 mm chain, galvanized.
- 2 x anchor chain rollers.

##### Stern

- 15 kg stainless steel anchor (Bruce type).
- Anchor davit.
- 50 m lead line.

##### Other

- 4 x Cleats, stainless steel.
- 2 x Spring cleats, stainless steel.
- Stainless steel protection strips at cleats and lifeline gates.
- 4 x Mooring lines.
- 6 x Fenders.
- Bow ladder.
- Boat hook.

#### **Covers, Canvas & Cushions:**

- Sprayhood – 2023.
- Sprayhood extension – 2014.
- Bimini.

- Cover for steering pedestal.
- Cockpit cushions.

### **SAFETY EQUIPMENT**

- Life raft, service needed.
- Swim/ Safety ladder at the swim platform.
- 2 x Fixing point for life lines in cockpit.
- Radar reflector (Blipper).

### **Fire-Fighting Equipment:**

- 3 x Fire extinguishers.
- Fire blanket.



# BERTHON

INTERNATIONAL YACHT BROKERS

## **Berthon UK**

Bath Road  
Lymington  
Hampshire  
SO41 3YL  
England

00 44 (0)1590 679 222  
brokers@berthon.co.uk  
berthoninternational.com

## **Berthon France**

Port de La Napoule  
11 Avenue Henry Clews  
F-06210  
Mandelieu La Napoule  
France

00 33 (0)4 93 63 66 80  
brokers@berthonfrance.fr  
berthonfrance.com

## **Berthon Scandanavia**

Ängsvägen 16  
473 33  
Henån  
Sweden

00 46 304 694 000  
brokers@berthonscandinavia.se  
berthonscandinavia.com

## **Berthon Spain**

Carrer de Jeroni Pou 17A  
07006  
/ Edificio Dux –  
Calle Porto Pi 4 - 1 07015  
Palma de Mallorca

00 34 639 701 234  
brokers@berthonspain.com  
berthonspain.com

## **Berthon USA**

40 Mary Street  
Newport  
Rhode Island  
02840  
USA

001 401 846 8404  
sales@berthonusa.com  
berthonusa.com

---

*DISCLAIMER These particulars have been prepared from information provided by the vendors and are intended as a general guide to the yacht, their accuracy cannot be guaranteed by us. The purchaser should confirm details of concern to them by survey or engineer's inspection. The purchaser should also ensure that the purchase contract properly reflects their concerns and specifies details on which they may wish to rely.*