



Hallberg-Rassy 45 > BROCK



Price	€235,000 VAT paid
Location	Marina Rubicon, Lanzarote, Canaries
Year	1989
LOA	46'4" / 14.12m
LWL	38'1" / 11.6m
Beam	14'2" / 4.32m
Draft	6'2 / 1.88m
Displacement	16,000kg / 35,274lb
Hull Material	GRP
Engine	1 x Volvo Penta TMD 31, 94hp
Builder	Hallberg-Rassy
Designer	German Frers
Accommodation	6 berths in 3 cabins



BROKER'S COMMENTS

The Hallberg-Rassy 45 is a great blue water cruiser, with 71 hulls built between 1988-1996. The 45 was the first Hallberg-Rassy model designed by Germàn Frers. The Hallberg-Rassy 45 has an external bulb lead keel bolted to the deep bilge, a skeg hung rudder and sturdy hull stiffeners, which makes this yacht a solid construction.

Hallberg-Rassy 45 BROCK was delivered in 1989. She has a conventional mast with lazy bag and Harken cars, an electric furler for the genoa and a manual furler for the staysail. She has a hard top, providing good protection in cold and rainy weather conditions and the opening mid window provides good ventilation in warm conditions. The hull has a positive stern with a teak covered stainless steel bathing platform.

The interior is made of mahogany and there is plenty of storage throughout the yacht. The layout offers a galley and the navigation area is located directly at the entrance. There is an owner's aft cabin with a double berth and an ensuite heads/shower cabin. Forward of the saloon, which includes two sofas and a sliding table with folding sides, there are two guest cabins with bunk berths. In front of the guest cabins is an additional heads with shower.

Since the current owner took over BROCK in 2018, she has benefitted from many upgrades and new equipment.

There is an opportunity to purchase BROCK together with her current berth.

Explore more photos here: <https://berthonscandinavia.se/en/yachts-for-sale/hallberg-rassy-45-brock/>

Key Facts:

- Conventional mast with Jazy Bag.
- Electric furler for genoa – 2022.
- Manual furler for stay sail – 2021.
- Main, Genoa and Staysail (North 3Di) – 2021.
- Standing rigging – 2020.
- Running rigging and sheets – 2020.
- 2 x Electric genoa winches – 2021.
- Teak on deck, coach roof and cockpit.
- Sea cocks – 2018.
- Bow thruster – 2020.
- Steering wires – 2020.
- Rudder bearing and seals – 2020.
- Charger/Inverter – 2024.
- Service batteries – 2024.
- Generator – 2020.
- Watermaker – 2021.
- Bilge pumps – 2019.
- Additional diesel tank providing a total of 1,350L.
- Diesel- and water tanks cleaned – 2019/2020.
- Garmin navigation system – 2021.
- 2 x Autopilots – 2021.
- Electric toilets – 2019.
- Air Condition 9000 BTU – 2021.
- Washing machine – 2018.

- Dish washer – 2018.

OWNER'S COMMENTS

I will never find a boat like this again. Cast off your moorings and set off for ARC World in safety and comfort, alone or with friends and family.

CONSTRUCTION

RCD Status: Our understanding is that the yacht is exempt from the essential safety requirements of the Recreational Craft Directive as she was built and placed into use within the EU prior to 1998.

Hull, Deck & Superstructure Construction:

- White hull with blue trim lines.
- Hull and deck in GRP.
- Teak on deck, coach roof, cockpit and hard top roof.
- Teak deck cleaned and treated – 2019.
- All sea cocks replaced – 2018.

Keel & Rudder:

- Bulbed lead keel, deep bilge.
- Balanced skeg hug rudder.
- Rudder overhaul including new bearings and seals – 2020.

MACHINERY

Engine & Gearboxes:

- Volvo Penta TMD31A, 94hp.

Maintenance & Performance:

- Engine yearly service – 2023.
- Engine overhaul – 2020.
- Engine hrs after overhaul approx. 60 hrs.
- The engine overhaul included for example new turbo, high pressure fuel pump, riser, injectors, shaft seal, alternator and much more.

Propulsion & Steering:

- Shaft drive.
- 3 blade folding propeller (MaxProp) – 2024.
- Bow thruster (MaxPower CT125 24V) – 2020.
- Steering wires – 2018.
- Steering sector – 2021.
- Stainless steel steering wheel.
- Leather cover for the steering wheel – 2022.

ELECTRICAL SYSTEMS

Battery Banks:

- Start battery 12V / 145Ah – 2018.
- Service batteries 24V / 495Ah, 6x12Vx165Ah AGM (Victron) – 2024.
- Bow thruster batteries 24V / 165Ah, 2x12Vx165Ah AGM (Victron) – 2020.

Battery Chargers:

- Charger 230V / 12V / 50A – 3 (Mastervolt Chargemaster) – 2020.
- Charger 230V / 24V / ??? for bow thruster batteries - 2020
- Charger / Inverter 230V / 24V / 3000W / 70A (Victron Quattro) – 2024.

Alternators:

- Alternator 12V / 60A.
- Alternator 24V / 75A – 2020.
- Spare alternator 24V / 110A (Mastervolt).

Generator:

- Generator (Lombardini Marine LMG6000) – 2020.

Shore Power:

- 230V shore power system.

Other Electrical:

- Battery monitor display (Victron).

PLUMBING SYSTEMS**Fresh Water & Water Heating System:**

- Fresh water boiler 65L – 2023.

Watermaker:

- Watermaker approx. 260L/h (Technomar) – 2021.

Bilge Pumps:

- Electric bilge pump, Auto/Man function with bilge water alarm - 2019
- Manual bilge pump – 2019.

TANKAGE**Fuel:**

- Fuel capacity approx. 1,350L, two tanks of 750L + 600L.
- Fuel tanks service, including cleaning, new gaskets and sensors – 2019.

Fresh Water:

- Fresh water capacity approx. 1,000L, four tanks of 250L each.
- Water tanks service, including cleaning, new gaskets and sensors – 2020.

NAVIGATION EQUIPMENT

- Compass (Silva) – 2020.
- Compass (Garmin) – 2021.
- 4 x Sailing instruments for speed, depth and wind (Garmin) – 2020.
- Plotter 12" (Garmin) – 2020.
- Plotter 9" (Garmin) – 2020.
- Radar (Garmin) – 2023.
- Radar protection, stainless steel.
- Electronic charts for Europe, updated – 2023.

- Autopilot (Garmin) – 2021.
- Autopilot drive unit (Garmin class B) – 2021.
- Backup Autopilot (Raymarine ST7000).
- Backup Autopilot drive unit (Lecombe & Schmidt) – 2021.
- VHF (Garmin) – 2022.
- Spare handheld VHF.
- AIS (Digital Yacht class B) – 2020.
- EPIRB (Global Fix E4) – 2021.
- PLB (ResQLink 400) – 2021.

DOMESTIC EQUIPMENT

Galley:

- 2-burner gas stove with oven (Techimpex) – 2023.
- 2 x Fridge boxes, compressor driven – 2018.
- Galley faucet – 2018.
- Dish washer – 2018.

Heads/Showers:

- Shower drain pump – 2024.
- Washing machine – 2018.
- Electric vacuum toilet 12V (Sanimarine), fresh water flush – 2019.
- Electric vacuum toilet 24V (Sanimarine), fresh water flush – 2019.
- Heads faucet – 2018.
- All toilet / sanitary hoses replaced - 2019

Heating & Ventilation:

- Air Condition 9,000 BTU with heat pump (CoolMar) – 2021.
- Sound proof case for air Condition unit – 2022.

Entertainment:

- Various books and wine.

Lighting:

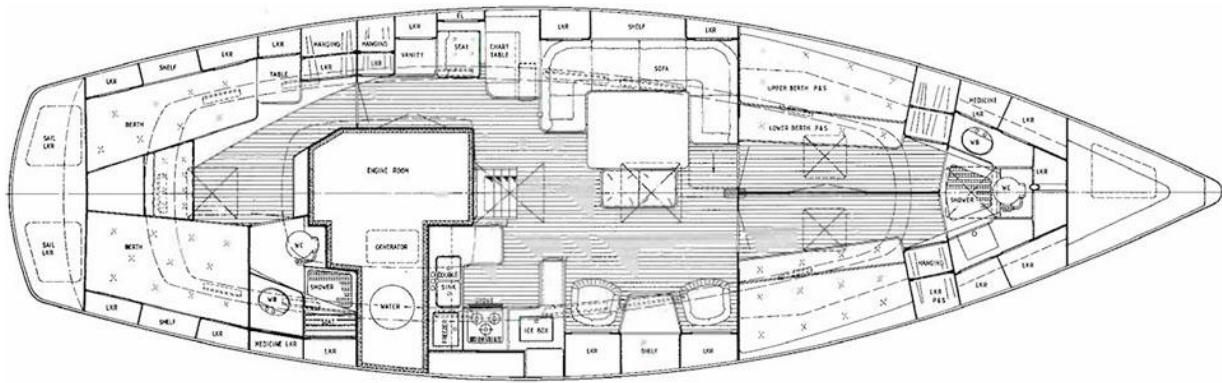
- LED light bulbs – 2020.
- Decorative indirect lights in aft cabin, saloon and galley – 2021.

ACCOMMODATION

Summary of Accommodation:

- 6 berths in 3 cabins.
- 4 x Single berth and 1 x Double berth.
- Light coloured upholstery – 2018.

Internal Layout:



Description of layout from forwards:

- Forward heads/shower cabin.
- 2 x Guest cabins with bunk berths.
- Saloon with two sofas and sliding saloon table.
- Galley.
- Navigation area with table, seat and electric control panel.
- Aft cabin with double berth and en suite heads/shower.

DECK EQUIPMENT

Rig:

- Conventional aluminium mast with two pairs of spreaders (Seldén).
- Mast service including cleaning, replacement of electric wires and antennas – 2018.
- Main sail track, batten car switch (Harken 18 high load)- 2022.
- Aluminium boom (Seldén).
- Rodkick
- Standing rigging – 2020.
- Running rigging – 2020.
- Sheets – 2020.
- Gennaker sheets – 2023.
- Electric furler for genoa (Facnor) – 2021.
- Manual furler for stay sail (Harken) – 2021.
- Spinnaker boom.
- Gennaker bow sprit, stainless steel – 2021.
- Deck light.
- 3-color and anchor light – 2023.
- Windex.

Winches:

- 2 x Genoa winches, electric (Harken 68) – 2022.
- 2 x Jib winches (Lewmar 44).
- 2 x Main sail winches (Lewmar 43).
- 3 x Halyard winches (Lewmar 43).
- Reef line winch (Lewmar 16).
- Electric winch handle (e-winch) – 2019.

Sails:

- Main sail (North 3Di) – 2021.
- Genoa (North 3Di) – 2021.
- Stay sail (North 3Di) – 2021.
- Gennaker – 2018.
- Gennaker snuffer (North) – 2024.

General:

- Stern platform, stainless steel, teak covered (Hallberg-Rassy).

Anchoring & Mooring Equipment:

- Electric windlass with capstan, galvanized chain, anchor 45kg stainless steel (ULTRA) – 2022.

Covers, Canvas & Cushions:

- Main sail Lazy Bag – 2018.
- Sprayhood – 2023.
- Bimini and frame (Hallberg-Rassy) – 2023.
- Winch covers – 2018.
- Hatch covers – 2018.
- Awning – 2018.

Tender & Outboard:

- Inflatable dingy 2,5m – 2022.
- Outboard (Tender Torqueedo Travel 1103) – 2022.

SAFETY EQUIPMENT

- Life raft 4 persons, serviced – 2023.
- Jack lines on deck (Wichard) – 2021.
- “Granny bars” at the mast.

Fire-Fighting Equipment:

- 4 x Fire extinguishers.

BERTHON

INTERNATIONAL YACHT BROKERS

Berthon UK

Bath Road
Lymington
Hampshire
SO41 3YL
England

0044 (0)1590 679 222
brokers@berthon.co.uk
berthoninternational.com

Berthon Scandinavia

Ängsvägen 12
473 33
Hälsånger
Sweden

0046 304 694 000
brokers@berthonscandinavia.se
berthonscandinavia.com

Berthon Spain (Yacht Sales)

Edificio Reina Constanza
Calle Porto Pi 8 - 8B
07015
Palma de Mallorca
Spain

0034 871 044 659
brokers@berthonspain.com
berthonspain.com

Berthon Spain (Yacht Services)

Carrer de Can Rius 14 - Local 1
07610
Palma de Mallorca
Spain

0034 971 415 441
services@berthonspain.com
berthonspain.com

Berthon USA

40 Mary Street
Newport
Rhode Island
02840
USA

001 401 846 8404
sales@berthonusa.com
berthonusa.com

DISCLAIMER These particulars have been prepared from information provided by the vendors and are intended as a general guide to the yacht, their accuracy cannot be guaranteed by us. The purchaser should confirm details of concern to them by survey or engineer's inspection. The purchaser should also ensure that the purchase contract properly reflects their concerns and specifies details on which they may wish to rely.