



## Hallberg-Rassy 43 > ZAPPA



Price	€375,000 EU VAT paid
Location	Orust, Sweden
Year	2008
LOA	44'6" / 13.57m
LWL	38'7" / 11.75m
Beam	13'5" / 4.08m
Draft	6'7" / 2m
Displacement	12,900kg / 28,440lb
Hull Material	GRP
Engine	1 x Volvo Penta D2-75
Builder	Hallberg-Rassy
Designer	German Frers
Accommodation	5+1 berths in 2 cabins & saloon



## BROKER'S COMMENTS

The Hallberg-Rassy 43 is definitely one of our favourites from the Swedish yard, based in Ellös on the island of Orust for +40 years.

Timeless lines, windscreen, center-cockpit, strong engine, big water tanks, easy to handle rig and sails, rubbing strake, solid interior in teak, two comfortable cabins with en suite bathroom; a typical Hallberg-Rassy and a great boat for those searching for an approx. 15 year old cruising yacht offering comfortable sailing and living on any ocean.

The teak interior offers two spacious cabins, a double and a single berth in the aft cabin and a v-berth in the forward cabin. Both have their own heads with shower. The U-shaped galley is located directly to starboard of the entrance and the navigation area is to port. In the saloon you will find a sofa, two comfortable armchairs and a solid table. There is huge amount of storage, like on any Hallberg-Rassy.

Hallberg-Rassy 43, ZAPPA was completed by the yard in the autumn of 2007 and delivered to her first owner in the Netherlands in 2008. From 2008 to 2012 she was sparingly used, mainly in local waters.

The current owner acquired ZAPPA in 2012 and brought her to Sweden. During the following annual winter storages, she underwent professional maintenance and was equipped for circumnavigation.

In June 2019 the current owner left Sweden for a 5 year circumnavigation. During her circumnavigation, ZAPPA has been lifted annually for anti-fouling and polishing, and regular servicing on the engine, generator and other equipment has been performed. The mainsail and propeller were replaced in December 2021. In 2023 the standing and running rigging were replaced, as well as the battery bank and cutlass bearing.

After her circumnavigation, ZAPPA is now back in Sweden. During the winter she has received a new engine, gear box and cutless bearing.

ZAPPA is a well maintained and well-equipped yacht that has successfully circumnavigated the world's oceans.

### Key Facts:

- Hydraulic in-mast furling.
- Standing and running rigging – 2022.
- Volvo Penta D2-75 – 2025.
- Gear box – 2025.
- Cutless bearing – 2025.
- 3 x Electric winches.
- Main sail – 2021.
- Propeller – 2021.
- Davits for dingy and outboard.
- Canvas (sprayhood, cockpit tent and bimini) – 2017.
- Generator 6kW – serviced 2024.
- Service batteries AGM – 2023.
- Battery charger/Inverter – 2020.
- Additional independent autopilot – 2018.
- Satellite telephone – 2019.
- Washing machine.
- Watermaker – 2018.

Explore more photos here: <https://www.berthoninternational.com/yacht-sales-brokerage/yachts-for-sale/hallberg-rassy-43-zappa/>

## CONSTRUCTION

*RCD Status: The yacht conforms with the essential safety requirements of Directive 94/25EC or RCDII (2013/53/EU as appropriate (Recreational Craft Directive) and is categorised A – “Ocean”*

### Hull, Deck & Superstructure Construction:

- White hull with blue trim lines.
- Integrated rubbing strake with stainless steel protection strips.
- Deep bilge.
- Antifouling 2024.
- Polish hull and superstructure 2024.
- Solid teak on deck and coach roof, cockpit and swimming platform – treated with Boracol 2024.

### Keel & Rudder:

- The keel is bolted to the bilge.
- Skeg hung rudder.

## MACHINERY

### Engine & Gearboxes:

- Volvo Penta D2-75 (75 HP) – 2025.
- Gear box – 2025.
- Double fuel filters with 3-way valve.
- Hydraulic transmission HS 25 A-B.
- Spares: Alternator, starter motor, engine control (black box).

### Maintenance & Performance:

- Last engine service - 2024.
- Turbo charger replaced - 2021.
- Cutlass bearing - 2025.
- Shaft seal (SSP) - 2025.

### Propulsion & Steering:

- Bow Thruster Sidepower 8hp.
- Shaft drive.
- Line cutter on shaft.
- 3-blade folding propeller (Flexofold) – 2021.
- Fixed propeller as spare.
- Rod steering system.
- Steering wheel, stainless covered elk leather.
- Emergency steering gear.

### Other Mechanical Equipment:

- Hydraulic system for furling of sails.

## **ELECTRICAL SYSTEMS**

### **Voltage Systems:**

- 12V battery system.
- 230V shore power system.

### **Battery Banks:**

- Start battery 12V / 120Ah - 2020.
- Service batteries AGM 12V / 400Ah (2 x 200Ah) – 2023.

### **Battery Chargers/Inverters:**

Battery charger/inverter 230V / 12V / 100A / 3500W inverter (Victron) – 2020.

### **Alternators:**

- Alternator 100A.

### **Generator:**

- Generator 6kW (Whisper power) – 2018.
- Latest service – 2024.

### **Shore Power:**

- 230V shore connection, isolator, circuit breaker, shore cable, 4 outlets.
- 230V inlet (Marinco).

### **Other Electrical:**

- Wind generator (Silent wind 400).
- Solar panels on bimini 305W – 2020.
- Emergency switch for engine start.

## **PLUMBING SYSTEMS**

### **Fresh Water & Water Heating System:**

- Hot water boiler approx. 40L.

### **Watermaker:**

- Watermaker approx. 60L/hrs automatic flushing (Spectra) – 2018.

### **Bilge Pumps:**

- Manual bilge pump.
- Electric bilge pump 12V with float switch.
- Electric emergency bilge pump.
- Bilge water alarm.

## **TANKAGE**

### **Fuel:**

- Fuel capacity approx. 395L.
- Stainless steel tank.

### **Fresh Water:**

- Fresh water capacity approx. 650L.

- Stainless steel tank.

#### **Grey/Blackwater Holding Tanks:**

- Holding tank capacity approx. 120L
- Stainless steel tanks, deck or gravity drained.

### **NAVIGATION EQUIPMENT**

- Autopilot with Whitlock drive and rate gyro (Raymarine ST 7002G+).
- Second Autopilot (Raymarine) – 2018.
- Wireless remote control for autopilot – 2013.
- MFD (Raymarine Axiom 7'') at chart table – 2018.
- MFD (Raymarine E120).
- LCD display 15" with keyboard for Raymarine E-series
- Radar 2kW in mast (Raymarine).
- VHF (ICOM IC-M410BB) – 2024.
- 2 x VHF loudspeakers – not in use, function unknown.
- Wind, speed and depth instruments (Raymarine ST60plus).
- AIS (Em-trac 5W) - 2024
- Active radar reflector (Echomax Active-X) – not in use, function unknown.
- EPIRB with GPS – 2016.
- Antenna system (Shakespear) in masthead – 2024.

### **DOMESTIC EQUIPMENT**

#### **Galley:**

- Gas stove with 2 burners and oven / Force 10).
- Additional single induction stove 220V.
- Fridge box with 12V compressor.
- Freezer box with 12V compressor.
- Mixer tap for hot and cold pressurized freshwater.
- Double sinks.
- Manual foot pump for fresh water.

#### **Heads/Showers:**

- Washing machine 220V/50Hz (Candy).
- 2 x Electric toilets.
- Mixer tap for hot and cold pressurized freshwater.
- Shower tap.
- Shower drain pump 12V.

#### **Heating & Ventilation:**

- Diesel heating system with outlets in all cabins/bathrooms (Webasto 5kW).
- Air condition, one unit covering the fore cabin and saloon and one unit covering the aft cabin (Climma) – 2018.
- 5 x Ventilators (Dorade).

#### **Entertainment:**

- Radio/CD
- 2 x Speakers in saloon.
- 2 x speakers in cockpit.

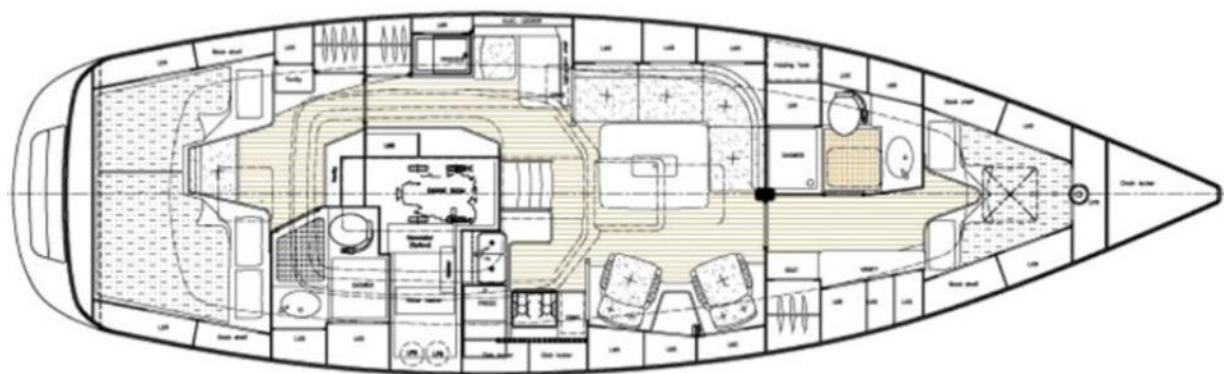


**Lighting:**

- LED in all interior lights.
- Red LED interior night lights.
- Reading light on chart table and at the beds.

**ACCOMMODATION****Summary of Accommodation:**

- 5 berths in 2 cabins.
- Possible to use saloon sofa as berth.
- Teak interior.
- Alcantara upholstery in saloon (Infanta Blue).
- Protection covers for saloon upholstery. (Dark blue).
- Upholstery in cabins (Cobalt Blue).
- Curtains (Dark blue).
- Ship clock, barometer, hygrometer, temperature (Wempe).

**Internal Layout:****Description of layout from forwards:****Forward Cabin:**

- Forward guest cabin with v-berth.
- En suite light heads with separate shower area.
- Plenty of storage in wardrobes, lockers and shelves.

**Forward Heads:**

- Heads with separate shower area.
- Plenty of storage in wardrobes, lockers and shelves.

**Saloon:**

- Spacious saloon with a sofa and two armchairs.
- Solid table.
- Plenty of storage in the seating area, lockers and shelves.

**Galley:**

- The U-shaped galley is located directly to starboard of the entrance.
- Plenty of storage in the lockers and drawers.

**Navigation Area:**

- The navigation area is located directly to port of the entrance and includes a comfortable seat, a chart table, drawers for storage and space for instruments and electrical panel.

**Aft Cabin:**

- Owner's aft cabin with a double berth and a single berth.
- En suite heads with separate shower area.
- Plenty of storage in wardrobes, lockers and shelves.

**DECK EQUIPMENT****Rig:**

- Hydraulic in-mast furling mast (Seldén).
- Hydraulic furler for genoa (Seldén).
- Manual furler for stay sail (Seldén).
- Standing rigging – 2022.
- Running rigging – 2022.
- Hydraulic backstay tensioner (Holmatro).
- Spinnaker pole.
- Aluminium rigging screw protection.
- Deck light fore and aft.
- Steaming light.
- Tricolour light.
- Anchor light, LED.
- Windex.

**Winches:**

- Main sheet/outhaul winch, manual (Lewmar 40 CST).
- Main sheet/outhaul winch, electric (Lewmar 40 CEST).
- Genoa sheet winches, electric (Lewmar 54 CEST).
- 2 x Halyard winches on mast, manual (Lewmar 40CST)

**Sails:**

- Furling main (Elvstrøm) – 2021.
- Working jib, foam and UV protection (Elvstrøm).
- Jib (Elvstrøm Epex 44m2) not used during circumnavigation – 2012.
- Staysail (Elvstrøm) - 2017
- All sails will be maintained by Elvstrøm Sails 2024.

**General:**

- Fixed windscreen, opening mid window.
- Grab rail at pedestal, on sprayhood and outside the windscreen.
- High gloss varnished entrance and chart table with integrated teak grab rails.
- Varnished foldable cockpit table.
- Teak seats in pushpit.
- Teak seats at pushpit.
- Teak outboard fitting on pushpit.
- Davits (Simpson).
- Shower at bathing platform
- LED navigation lights.

**Anchoring & Mooring Equipment:**

- Windlass with remote control.
- Rocna anchor 20kg.
- 70m galvanised chain + 50m rope.
- Extra bow roller
- Aft - Stainless steel Bruce anchor 15 kg
- 2 x Cleats.
- 4 x Spring cleats.
- Stainless steel strips at the cleats.
- 6 x Mooring lines.
- 6 x Fenders.
- Boat hook.
- Life line gates.

**Covers, Canvas & Cushions:**

- Cockpit tent.
- Bimini with removeable sunscreens.
- Hatch covers
- Cockpit cushions
- Cover for steering pedestal/cockpit table.
- Winch covers.
- Full winter cover.

**SAFETY EQUIPMENT**

- Lifteraft 6 persons (Plastimo) – next service March 2027.
- EPIRB (Ocean Signal).
- Danbouy inflatable.
- Rescue sling.

**Fire-Fighting Equipment:**

- 4 x Fire extinguishers (Dry Chemical Powder) – 2019.



# BERTHON

INTERNATIONAL YACHT BROKERS

**Berthon UK**

Bath Road  
Lymington  
Hampshire  
SO41 3YL  
England

0044 (0)1590 679 222  
brokers@berthon.co.uk  
berthoninternational.com

**Berthon Scandinavia**

Ängsvägen 12  
473 33  
Henån  
Sweden

0046 304 694 000  
brokers@berthonscandinavia.se  
berthonscandinavia.com

**Berthon Spain (Yacht Sales)**

Edificio Reina Constanza  
Calle Porto Pi 8 - 8B  
07015  
Palma de Mallorca  
Spain

0034 871 044 659  
brokers@berthonspain.com  
berthonspain.com

**Berthon Spain (Yacht Services)**

Carrer de Can Rius 14 - Local 1  
07610  
Palma de Mallorca  
Spain

0034 971 415 441  
services@berthonspain.com  
berthonspain.com

**Berthon USA**

40 Mary Street  
Newport  
Rhode Island  
02840  
USA

001 401 846 8404  
sales@berthonusa.com  
berthonusa.com

---

*DISCLAIMER These particulars have been prepared from information provided by the vendors and are intended as a general guide to the yacht, their accuracy cannot be guaranteed by us. The purchaser should confirm details of concern to them by survey or engineer's inspection. The purchaser should also ensure that the purchase contract properly reflects their concerns and specifies details on which they may wish to rely.*